



 Public Works

The logo for OC Public Works. It consists of a stylized orange circle with a green leaf on top, followed by a large orange letter 'C'. To the right of this graphic, the words "Public Works" are written in a white, serif typeface.



OC Public Works

---

# PETERS CANYON / JAMBOREE ROAD BIKEWAY EXTENSION PROJECT

---

PROJECT UPDATE



## STAFF PRESENTATION

20 MINUTES



## QUESTIONS & ANSWERS

30 MINUTES



## PROJECT SURVEY

# PRIOR OUTREACH



## Prior Outreach Efforts

- Workshop #1: February 19, 2015 - General Development Plan Process
- Workshop #2: March 14, 2015 – Surveys/Comments
- Workshop #3: April 23, 2015 – Survey Data Summary/Comments
- Workshop #4: October 7, 2015 – Introduced class 1 trail along Jamboree Rd.

## Summarize Results

- Public opposed the through-the-park-option
- East side of Jamboree Road alternative presented

# COUNTY PROJECT PROCESS



**FY 18/19**

Work with stakeholders to gauge their interest/support and preferred alignment.



**FY 19/20**

Environmental Phase



**FY 20/21**

Design Phase/  
Community Outreach



**FY 22/23**

Construction Phase





# PROJECT BACKGROUND



- OC Foothills Bikeways Strategic Plan: Regional Parks Connector
  - 116,000 residents
  - 9 schools
  - 8 parks
- Grant Funding



These proposed corridors were presented at the June 2015 Public Roundtable.



Corridor alignment alternatives were developed as a result of Roundtable feedback meeting.

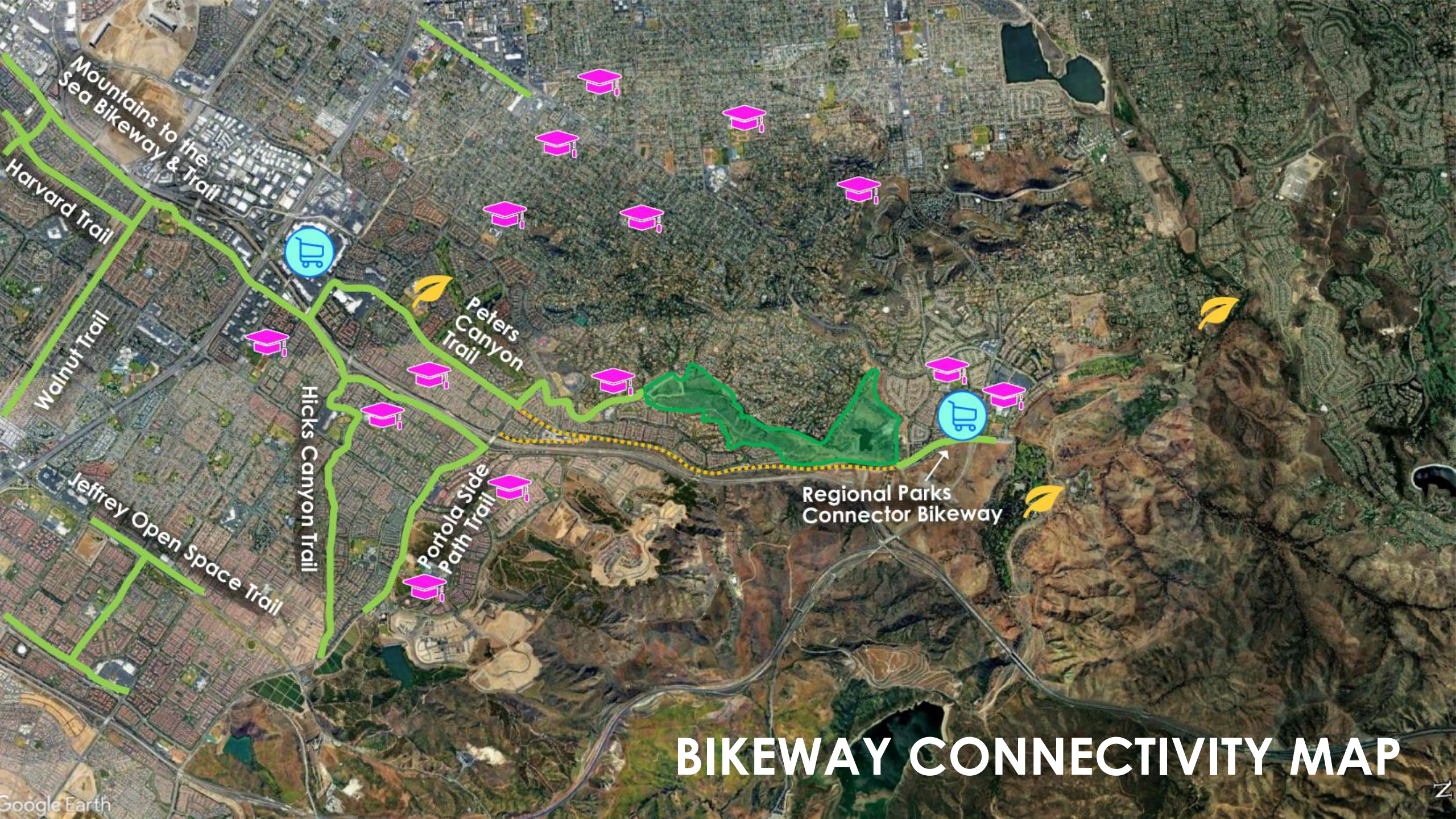
# PROJECT BACKGROUND



- **Class I Bikeway**
- **Gap closure of Mountains to the Sea Trail**







Mountains to the  
Sea Bikeway & Trail

Harvard Trail

Walnut Trail

Jeffrey Open Space Trail

Hicks Canyon Trail

Portola Side  
Path Trail

Peters  
Canyon  
Trail

Regional Parks  
Connector Bikeway

# BIKEWAY CONNECTIVITY MAP



# PROJECT AREA MAP





# EXISTING CONDITIONS



## Existing Jamboree Road Typical Section

- Class II Bikeway
- Sidewalk





# POTENTIAL ALIGNMENT ALTERNATIVES





# POTENTIAL ALIGNMENT ALTERNATIVES



## Option 1

[ East side of Jamboree (behind OCFA) ]

### EXISTING CONDITIONS



Segment adjacent to homes and toll road.



Segment adjacent to open space along Jamboree, looking south.





# POTENTIAL ALIGNMENT ALTERNATIVES



## Option 1

[ East side of Jamboree (behind OCFA) ]

- Steep hillside slopes, long retaining wall, 3 to 6 feet tall
- Safety: multiple street crossings
- Major utility relocation
- Sensitive Habitats
- Class II on Portola Pkwy

**Cost Range**  
\$20 -25 M



# POTENTIAL ALIGNMENT ALTERNATIVES



## Option 2

[ West side of Jamboree ]



Peters Canyon Regional Park

### LEGEND

Peters Canyon Regional Park Boundaries



Proposed Alignment Option 2



Street Crossing





# POTENTIAL ALIGNMENT ALTERNATIVES



## Option 2 [ West side of Jamboree ]

### EXISTING CONDITIONS



Segment adjacent to homes.



Segment adjacent to open space along Jamboree, looking north.



# POTENTIAL ALIGNMENT ALTERNATIVES



## Option 2

[ West side of Jamboree ]

- Safety: multiple street crossings
- Acquire Right-of-way
- Major tree removals
- Class II on Portola Pkwy

**Cost Range**  
\$20 -25 M





A wide-angle landscape photograph showing a lush green field in the foreground, a line of trees in the middle ground, and rolling hills and mountains in the background under a bright blue sky with scattered white clouds. The text "THANK YOU" is centered in the middle of the image.

THANK YOU





 Public Works