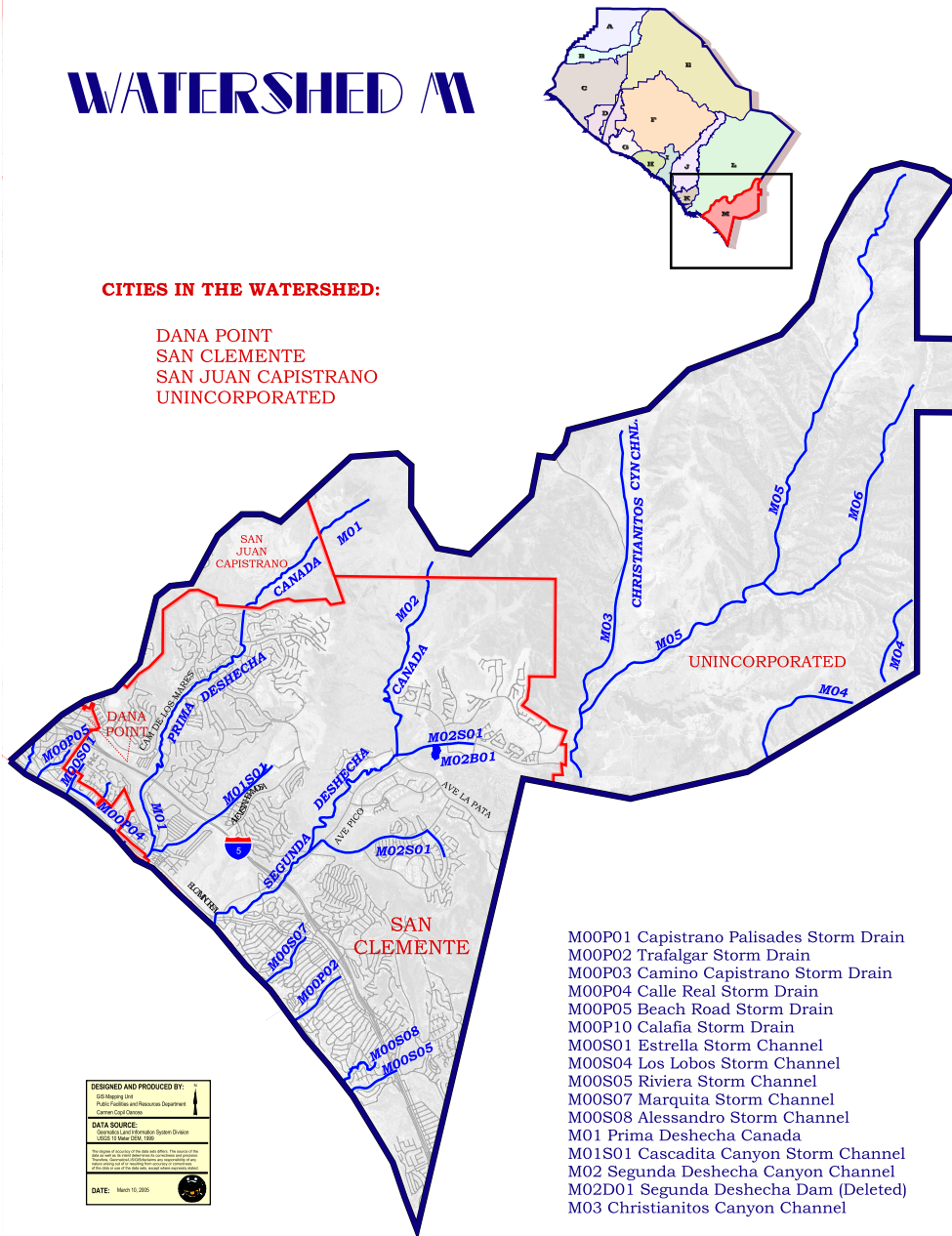


WATERSHED M

CITIES IN THE WATERSHED:

DANA POINT
SAN CLEMENTE
SAN JUAN CAPISTRANO
UNINCORPORATED



- M00P01 Capistrano Palisades Storm Drain
- M00P02 Trafalgar Storm Drain
- M00P03 Camino Capistrano Storm Drain
- M00P04 Calle Real Storm Drain
- M00P05 Beach Road Storm Drain
- M00P10 Calafia Storm Drain
- M00S01 Estrella Storm Channel
- M00S04 Los Lobos Storm Channel
- M00S05 Riviera Storm Channel
- M00S07 Marquita Storm Channel
- M00S08 Alessandro Storm Channel
- M01 Prima Deshecha Canada
- M01S01 Cascadita Canyon Storm Channel
- M02 Segunda Deshecha Canyon Channel
- M02D01 Segunda Deshecha Dam (Deleted)
- M03 Christianitos Canyon Channel

DESIGNED AND PRODUCED BY:
GIS Mapping Unit
Public Facilities and Resources Department
Orange County

DATA SOURCE:
Orange County Information System Division
10/23/13 11:46:24 AM

DATE: March 10, 2015

5000 0 5000 Feet

NOTICE

This drainage map has been prepared for information purposes only. The listed facilities have been determined from available information provided by public agencies, but may not be exact or up to date. The user of this map is responsible for verifying exact location, ownership and maintenance responsibilities of the drainage facilities. Additional information may be obtained from public plans and recorded deeds. Neither the County of Orange nor the Orange County Flood Control District (OCFCD) assumes any liabilities for inaccuracy of this map.