



East Garden Grove-Wintersburg Channel Improvement Project

Virtual Community Meeting | 30 July 2020

WELCOME – THANK YOU FOR JOINING US!

Getting you started: Guidelines for today's meeting

Your Presenters



Justin Golliher
Project Management



Shannon Widor
Communications

Participating Key Staff:

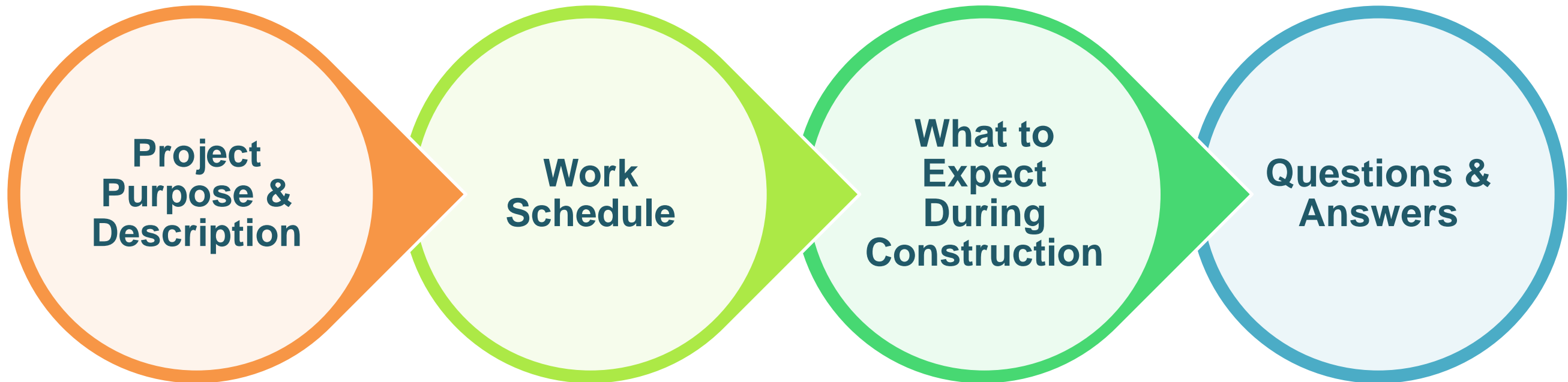
Melissa Pasa – Project Management

Teddy Kamarzarian – Construction Management

Guidelines for today's meeting

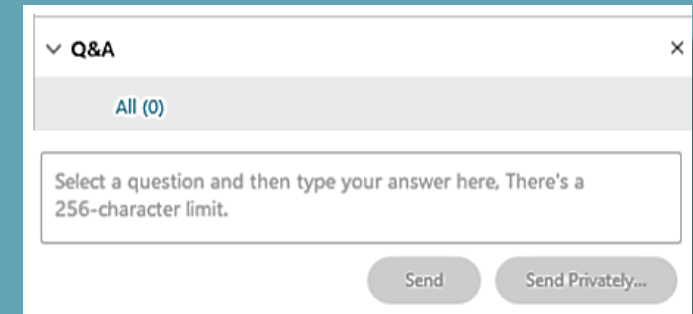
- 1 Today's presenters will move through various information slides
- 2 Attendees' phones are muted to avoid interruptions; please hold questions until Question & Answer period
- 3 During Question & Answer period, presenters will call on attendees who "raise hand" to ask questions/provide comments
- 4 Please be respectful of others' viewpoints and comments

WHY ARE WE HERE TODAY?



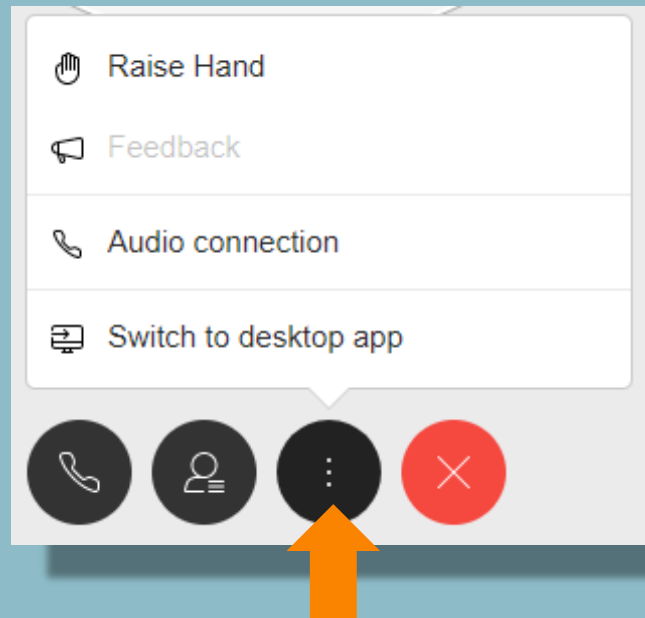
HOW YOU CAN ASK QUESTIONS, PROVIDE COMMENTS

1 Type your question or comments in the “Q&A” box

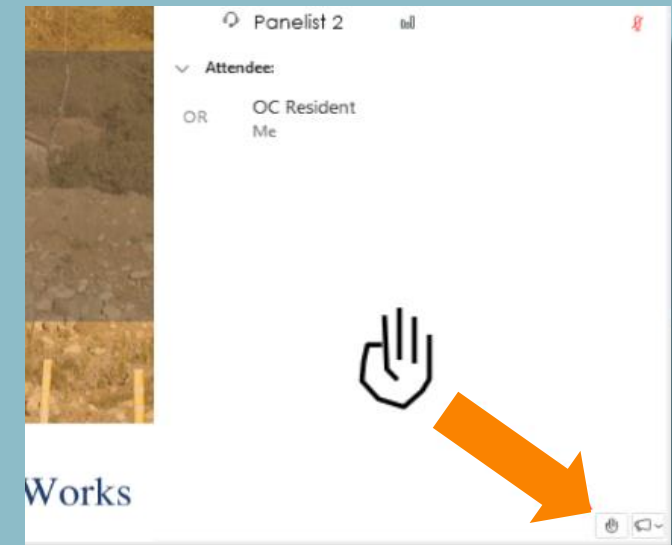


Or 2 Click “Raise Hand” option

- Click “three dots” icon
- Click “Raise Hand”



- Click/expand “Participants” box
- Then click small “hand” icon in bottom-right corner



Or 3 If only listening on phone: Dial *3 (“star 3”)

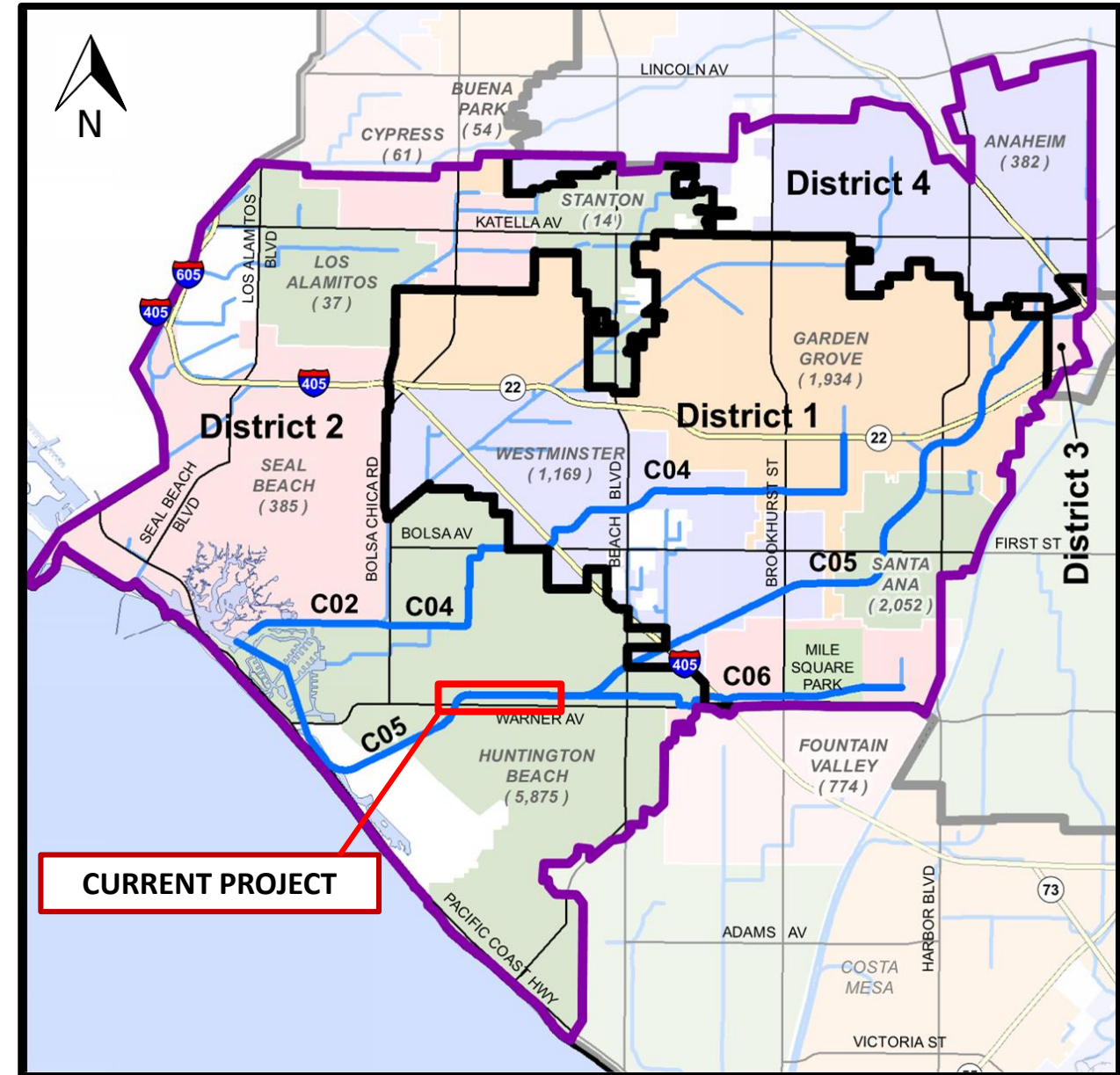


PURPOSE + DESCRIPTION



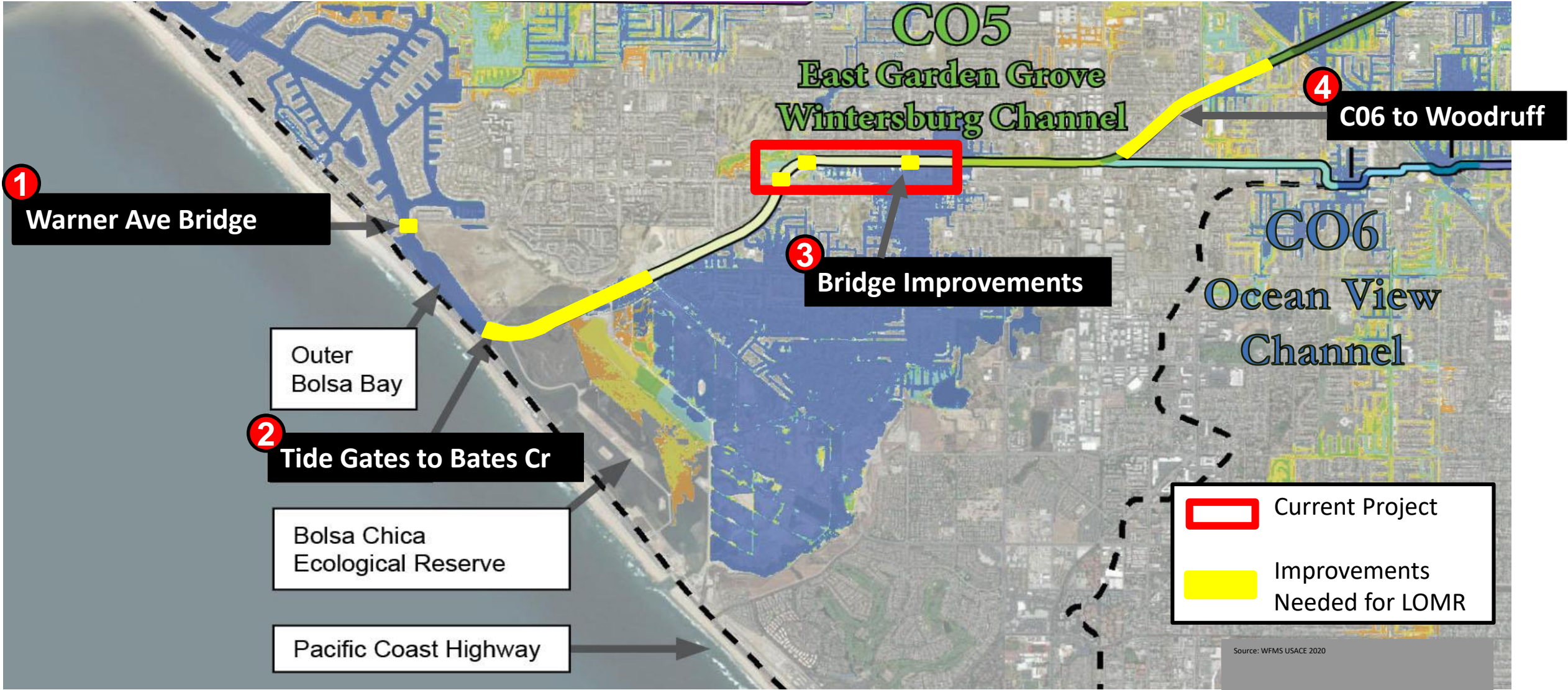
UPDATE: WESTMINSTER WATERSHED STUDY

- Partnership with US Army Corps of Engineers (USACE)
- Largest remaining floodplain in Orange County
- Public Meetings Hosted in November 2018
- Chief's Report Signed July 9, 2020
- Included in Water Resources Development Act of 2020
- OCPW can build projects now & apply as credit toward future project cost share with USACE

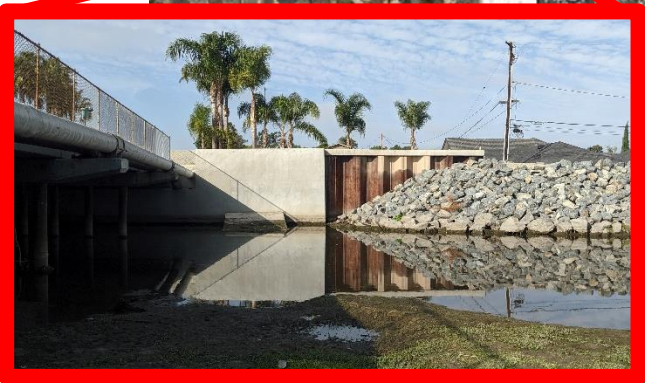


FLOODPLAIN MANAGEMENT

GOAL: REMOVAL FROM FLOODPLAIN



PROJECT LOCATION



PROJECT PURPOSE

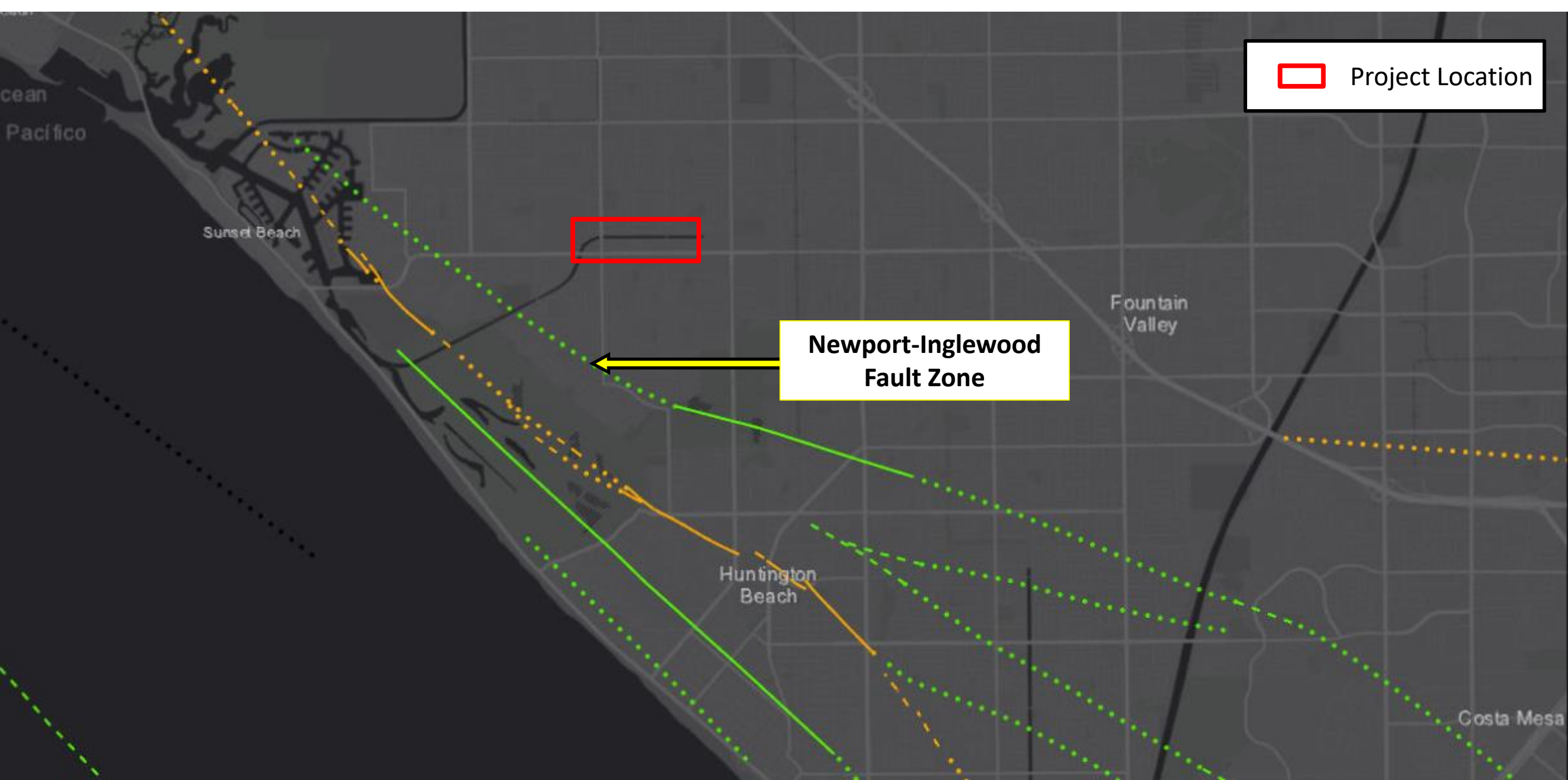
FLOOD PROTECTION

UPGRADE TO CURRENT DESIGN STANDARDS

SEISMIC RESILIENCE

NEAR NEWPORT-INGLEWOOD FAULT

SEISMIC RESILIENCE



FLOOD PROTECTION

JANUARY 2017 STORM PATROL

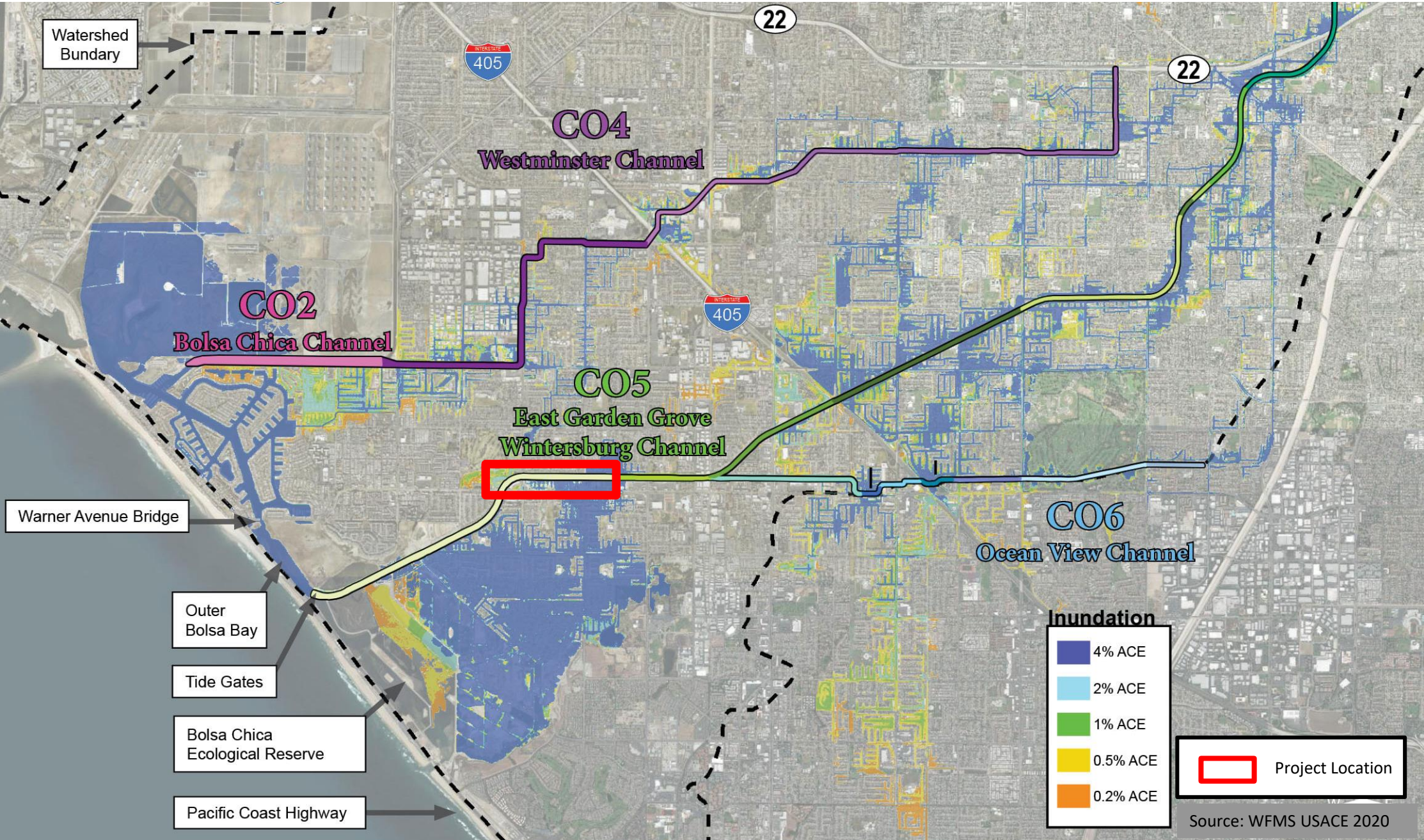


WARNER AVE BRIDGE

DRAINAGE ISSUES



EXISTING CONDITIONS – Potential Flooding



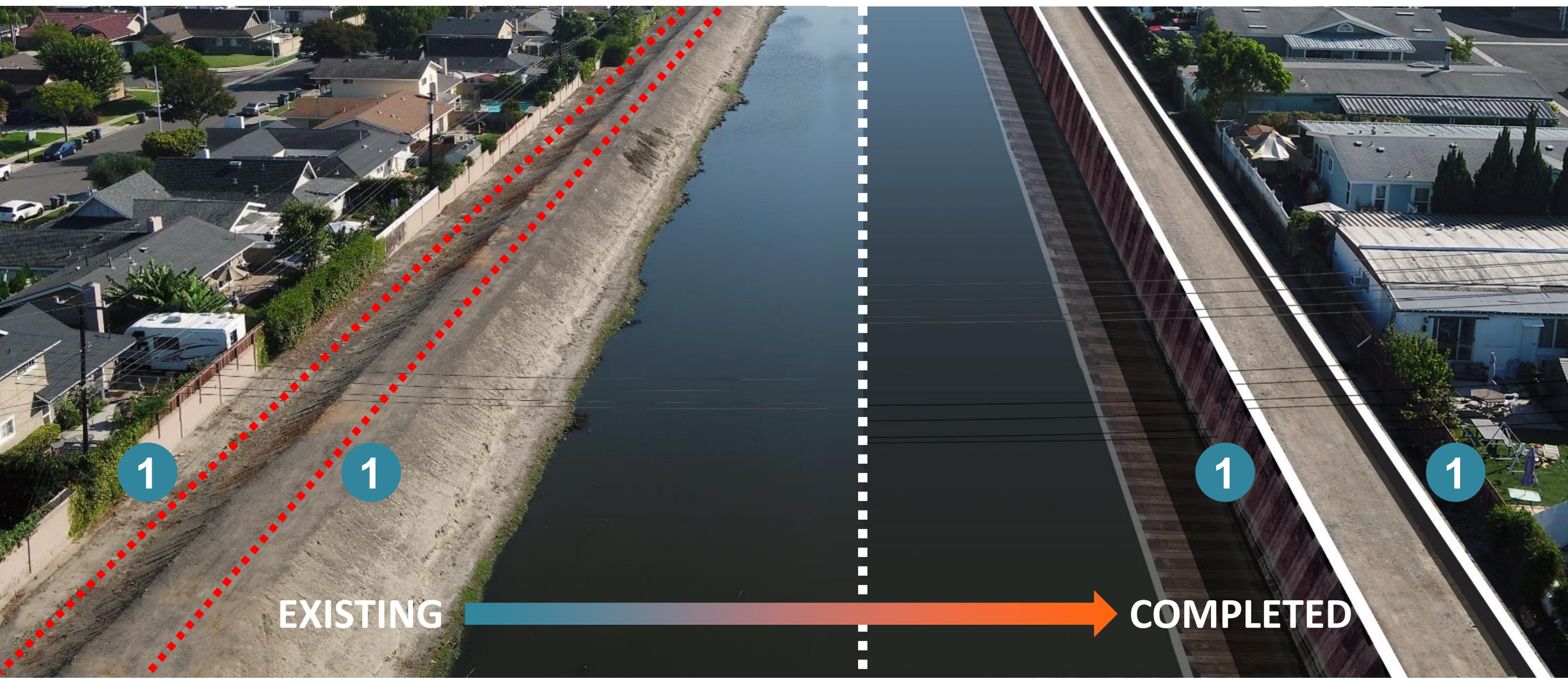
PROJECT COMPONENTS

- 1 DUAL-ROW STEEL SHEET PILE CHANNEL WALLS**
- 2 SOIL IMPROVEMENTS**
- 3 EXCAVATION OF CHANNEL SIDE SLOPES**
- 4 LANDSIDE DRAINAGE IMPROVEMENTS**
- 5 ENHANCED OPERATIONS & MAINTENANCE ACCESS**

PROJECT IMPROVEMENTS

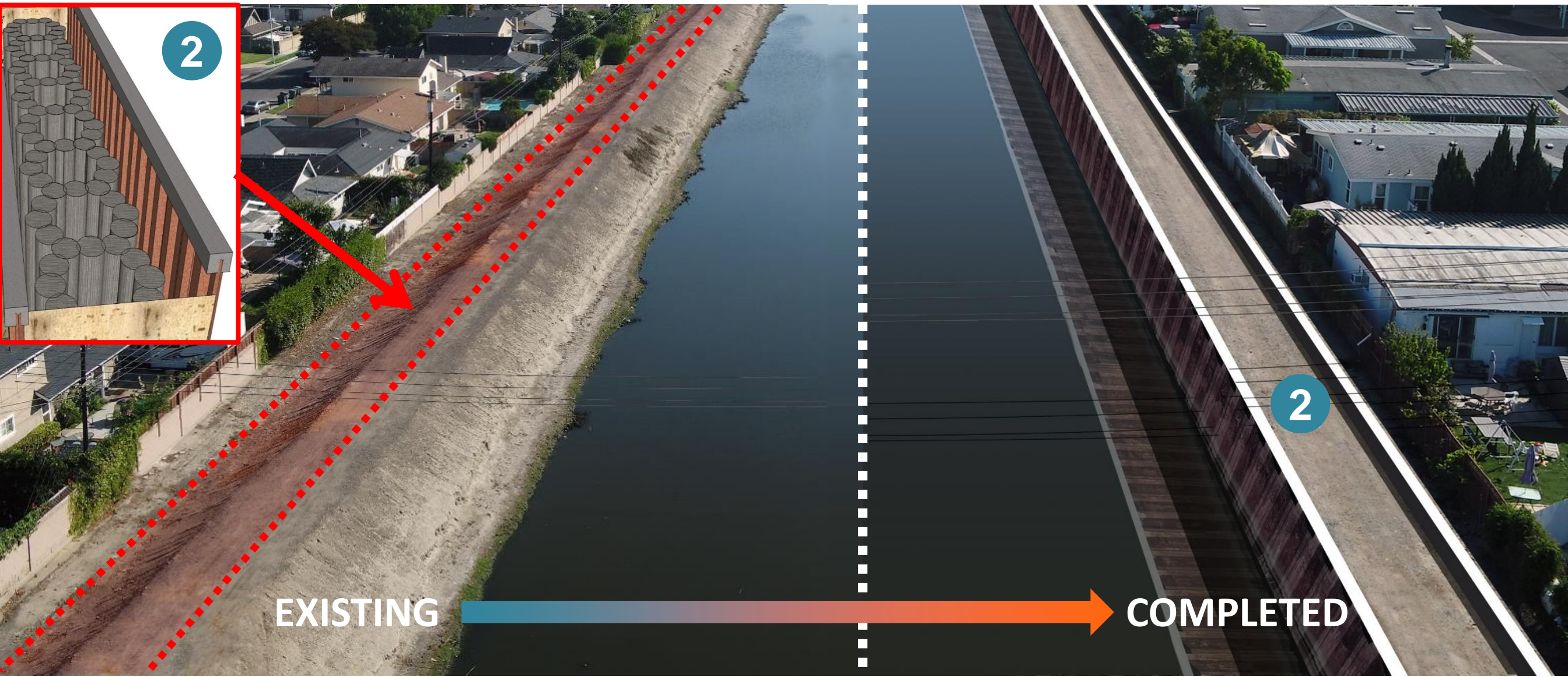
1

DUAL-ROW STEEL SHEET PILE CHANNEL WALLS



PROJECT IMPROVEMENTS

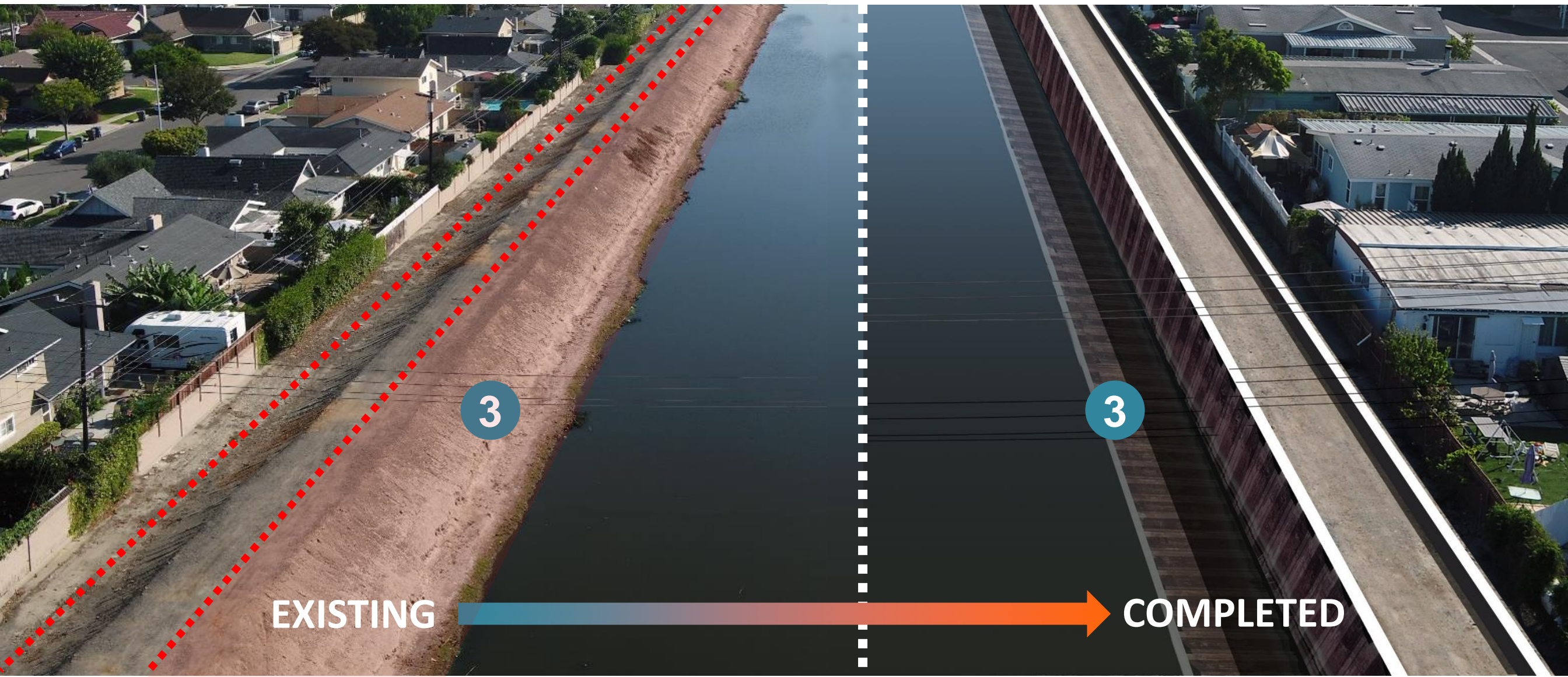
2 SOIL IMPROVEMENTS



PROJECT IMPROVEMENTS

3

EXCAVATION OF
CHANNEL SIDE SLOPES

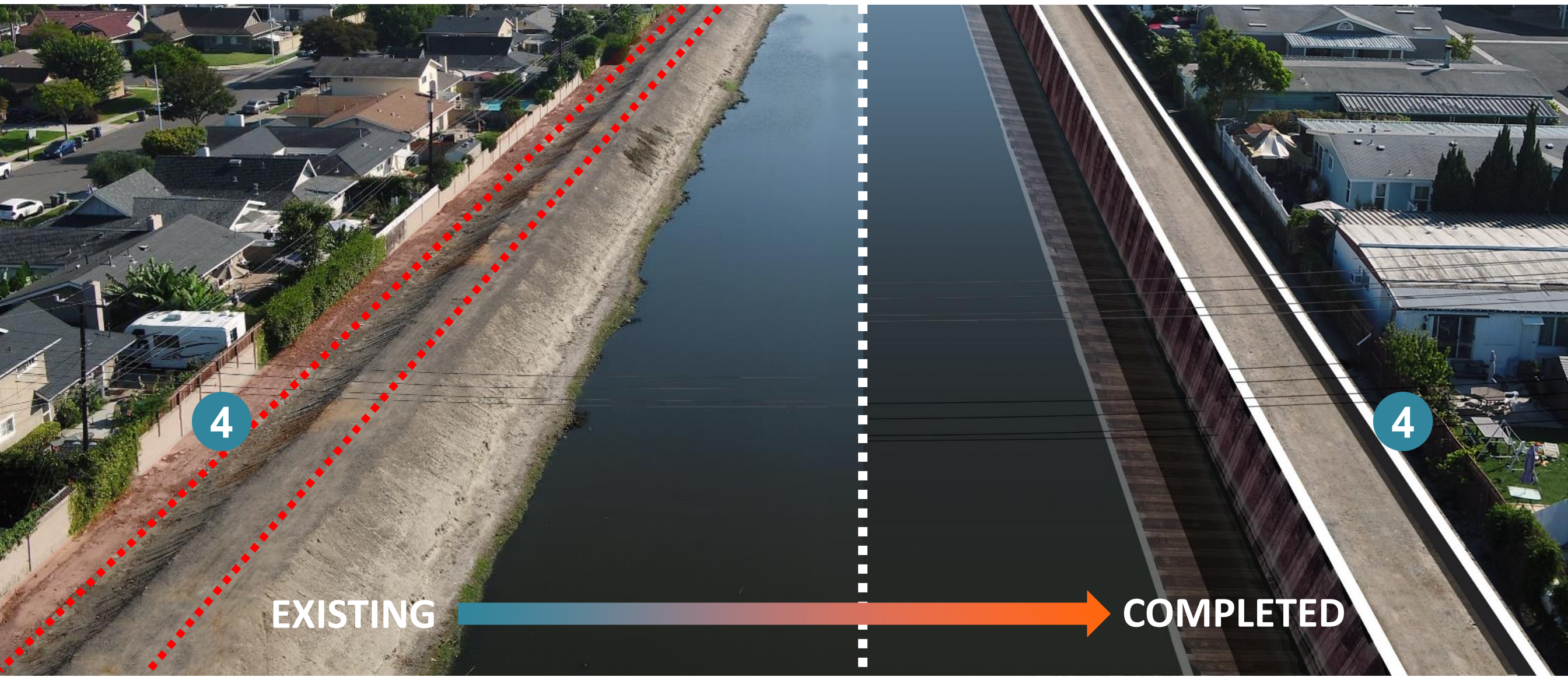


EXISTING

COMPLETED

PROJECT IMPROVEMENTS

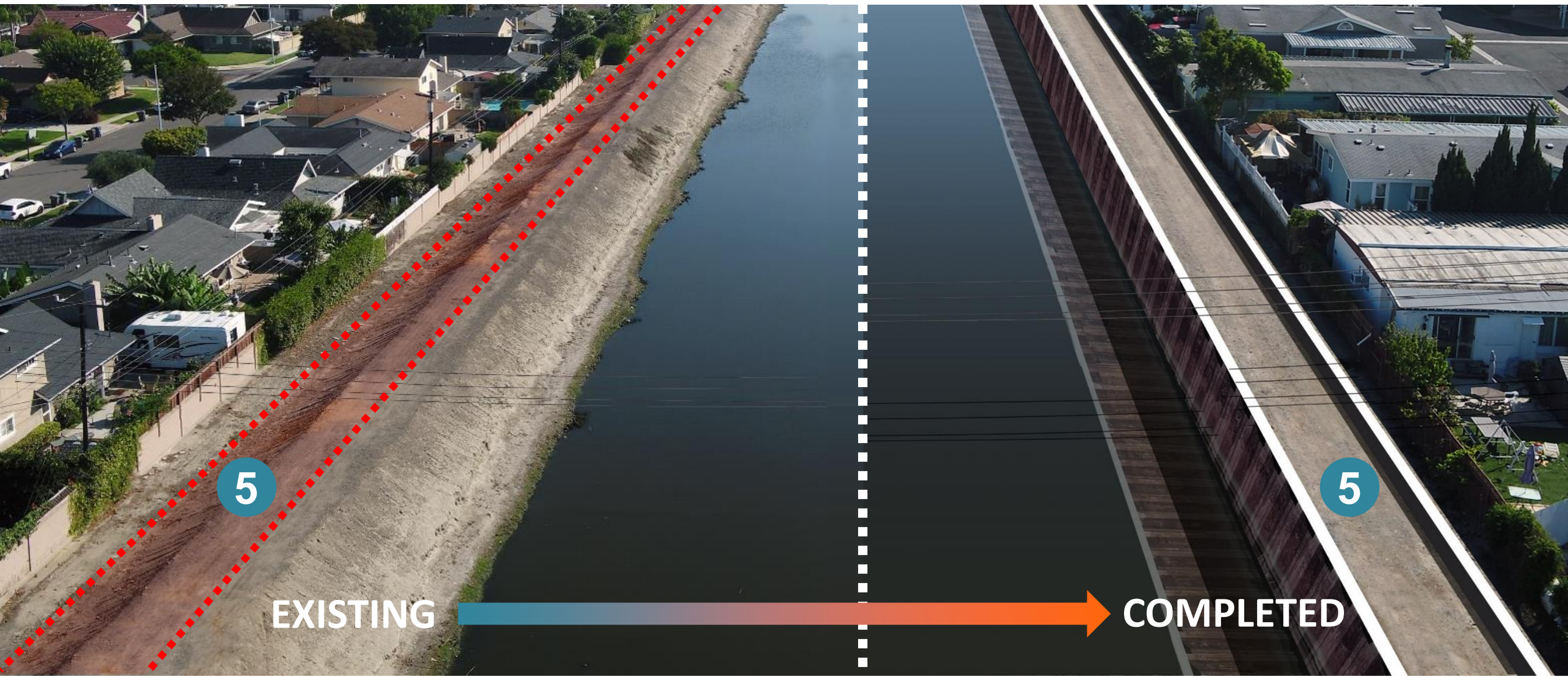
4 LANDSIDE DRAINAGE IMPROVEMENTS



PROJECT IMPROVEMENTS

5

ENHANCED OPERATIONS
& MAINTENANCE ACCESS

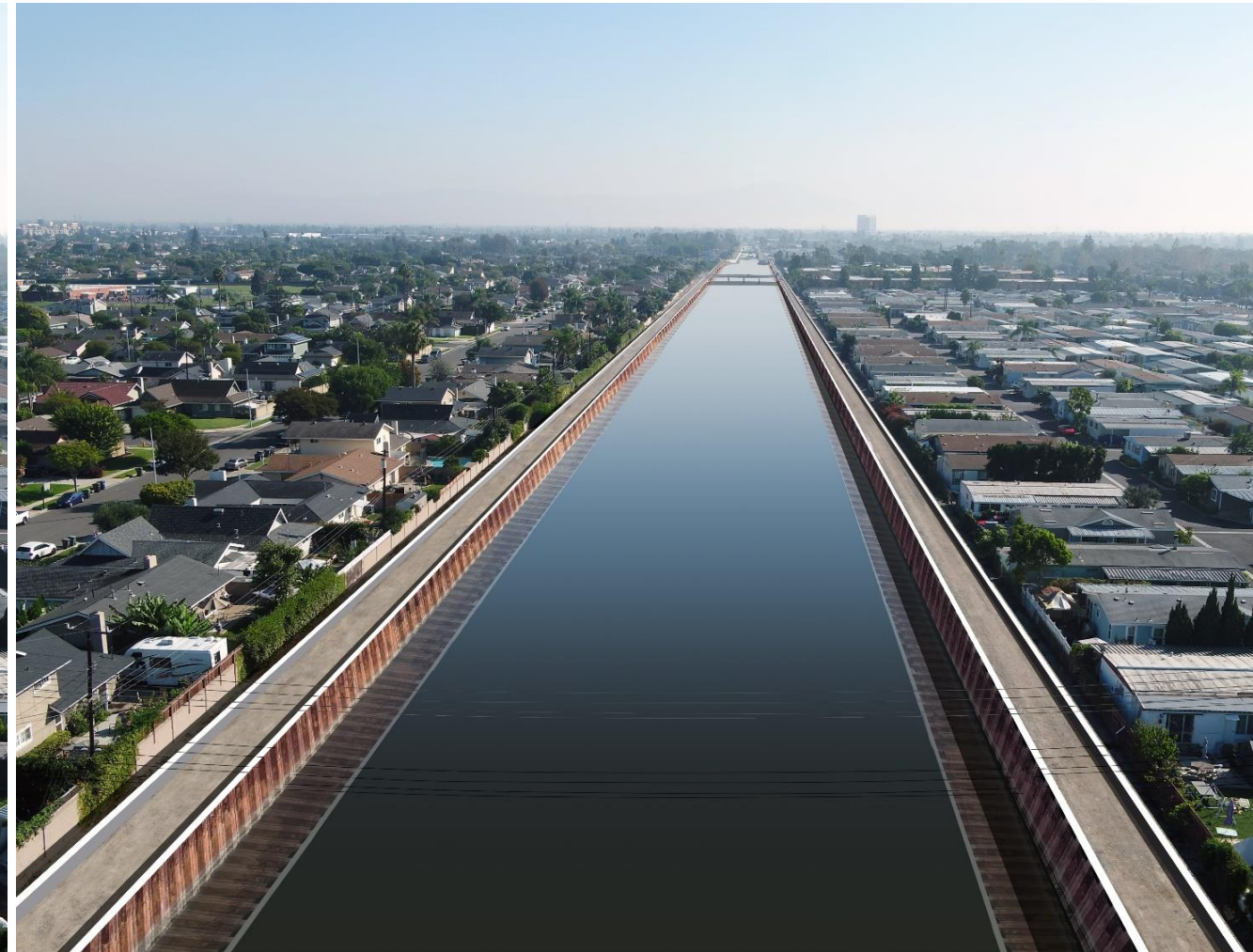


PROJECT IMPROVEMENTS

EXISTING



COMPLETED PROJECT



PROJECT IMPROVEMENTS

EXISTING



COMPLETED PROJECT

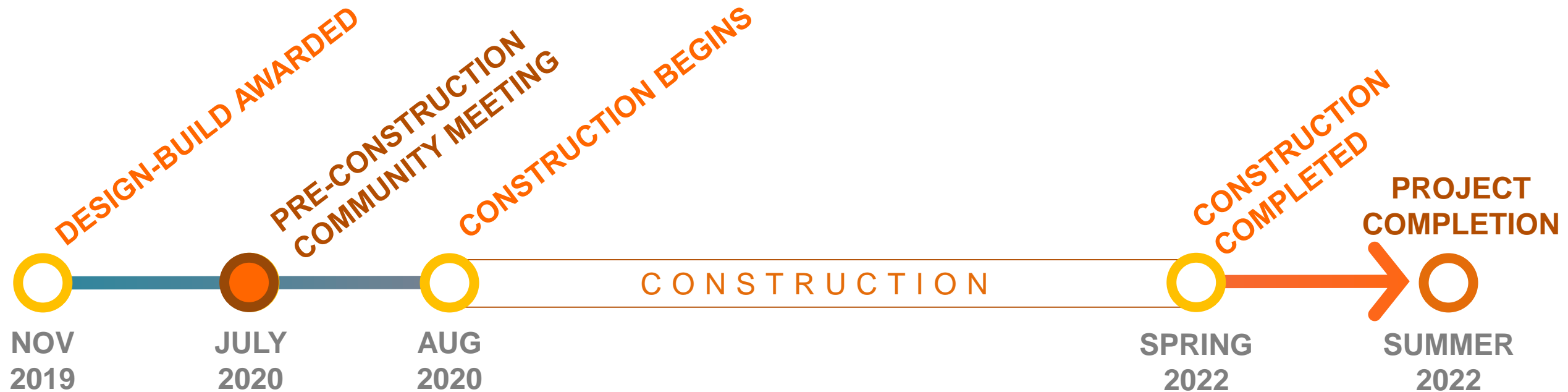


EDWARDS ST BRIDGE

PROJECT SCHEDULE



DESIGN-BUILD PROJECT DELIVERY



PROJECT TIMELINE

EAST GARDEN GROVE-WINTERSBURG CHANNEL IMPROVEMENTS PROJECT

WORKING DAYS, HOURS & CONSTRUCTION DURATION

Working Days: Monday - Friday

(Occasional Saturdays As-Needed)

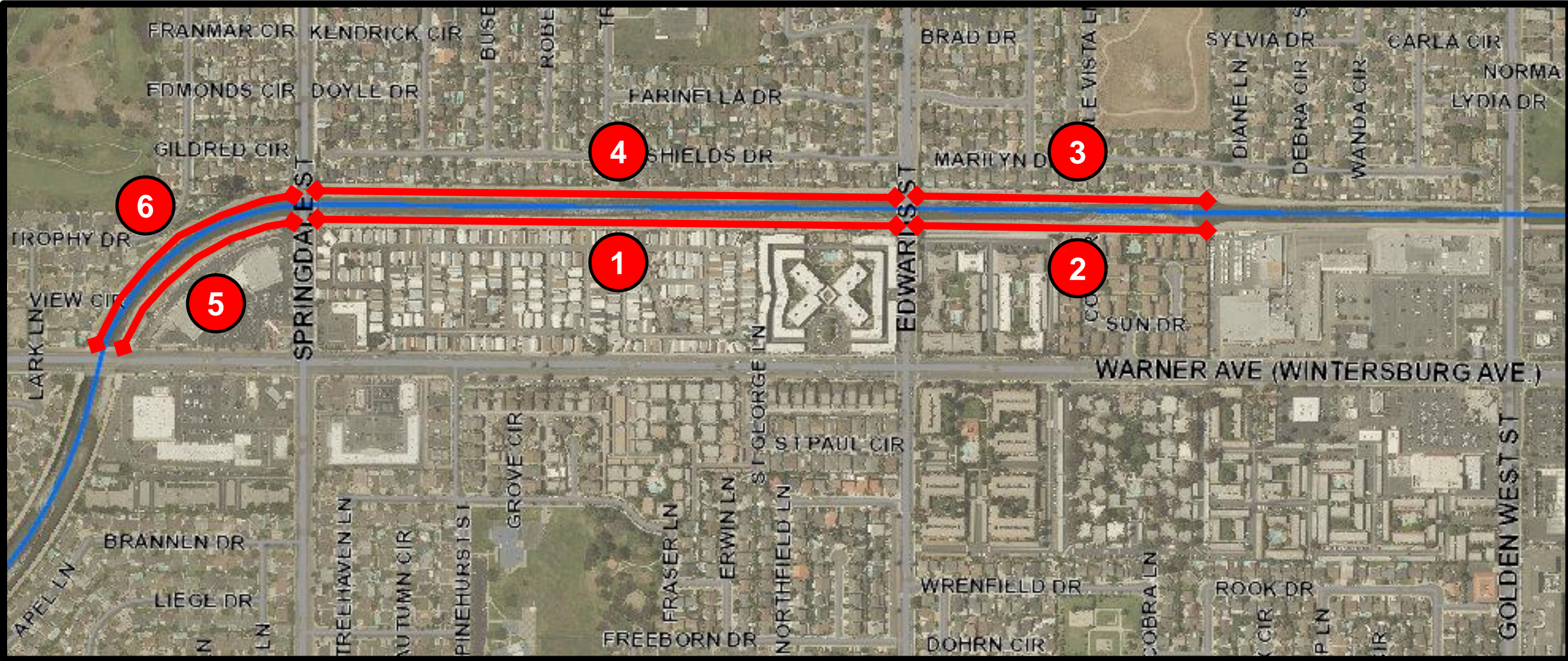
Working Hours: 7 am – 7 pm

(Primary 8 - 6pm & Daylight Dependent)

Construction Duration: Aug 2020 – Spring 2022

(Schedule is subject to change due to weather and other factors)

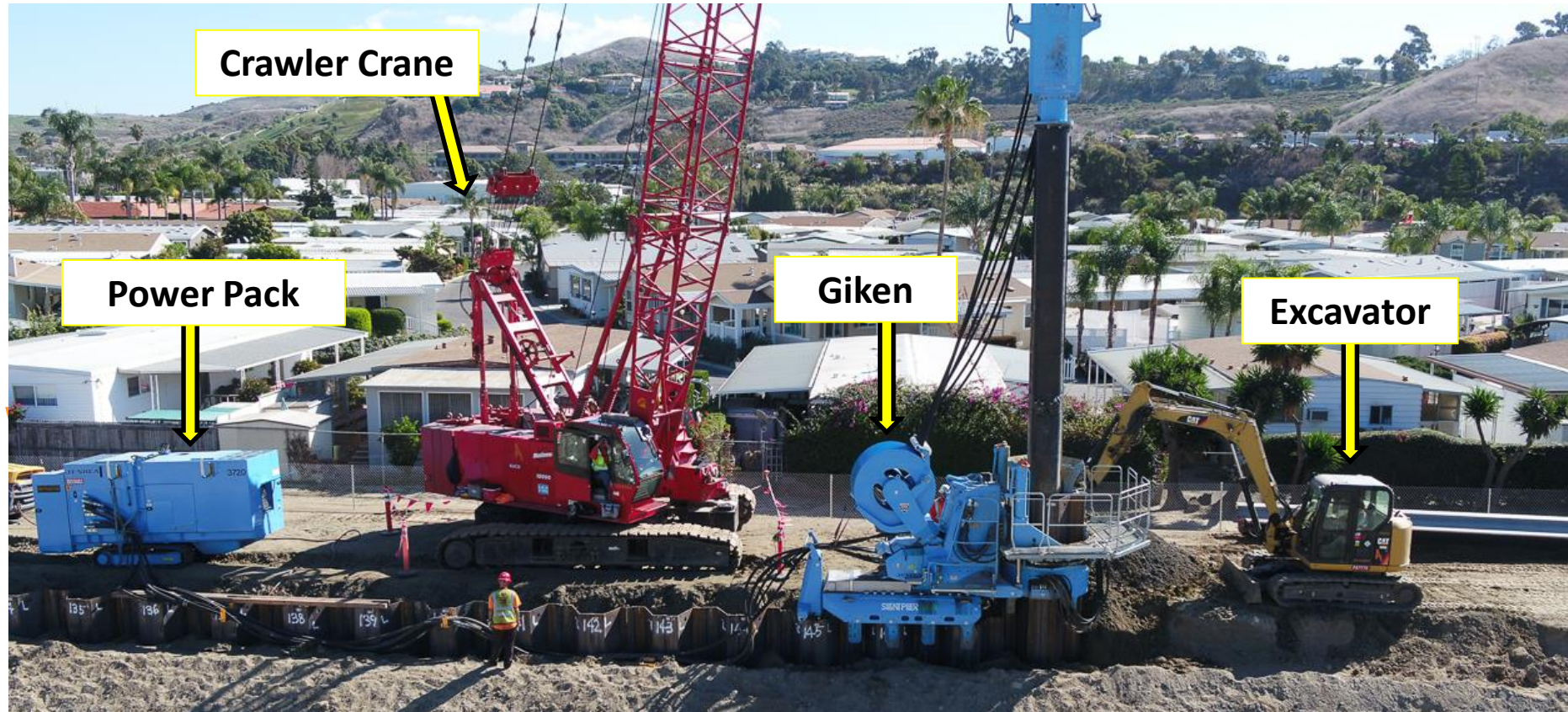
CONSTRUCTION SEQUENCING



WHAT TO EXPECT DURING CONSTRUCTION



STEEL SHEET PILE INSTALLATION



CRAWLER CRANE – MOVE MATERIAL

GIKEN – SILENT PILER

EXCAVATOR – MOVE MATERIAL



**VIBRATORY
HAMMER**

SOIL IMPROVEMENTS – SOIL CEMENT MIX



SOIL EXCAVATION



WHAT TO EXPECT DURING CONSTRUCTION

Dust & Noise Monitoring and Mitigation

- Regular site watering to control excess dust
- Sound curtain walls
- Equipment being used is quieter than standard rigs



WHAT TO EXPECT DURING CONSTRUCTION

Environmental Monitoring

- Pre-Construction Surveys (*Eelgrass, Invasive Species, Protected Species*)
- Water Quality monitoring
- Biological monitoring during bird nesting season

Overhead Power Line Coordination

- SCE will be working on existing power poles to facilitate the Project construction sequencing

Truck Hauling

- Will be conducted during off-peak morning and afternoon hours

CONTACT & PROJECT UPDATES

Website: www.OCPublicWorks.com/EGGW

E-mail: ProjectInfo@ocpw.ocgov.com

Phone: 714-667-9759

Social Media:



[Facebook.com/OCPublicWorks](https://www.facebook.com/OCPublicWorks)



[Twitter.com/OCPublicWorks](https://twitter.com/OCPublicWorks)



[Instagram #OCPublicWorks](https://www.instagram.com/OCPublicWorks)



[YouTube #OCPublicWorks](https://www.youtube.com/OCPublicWorks)

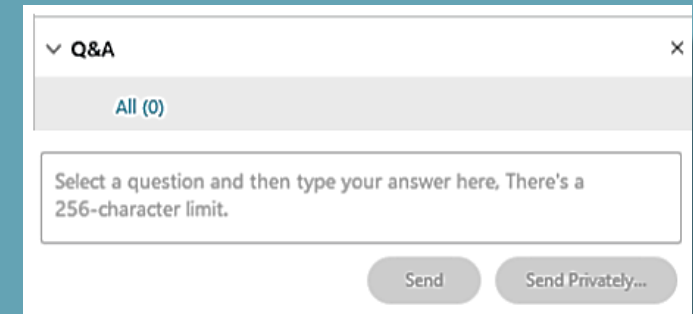


QUESTIONS & ANSWERS



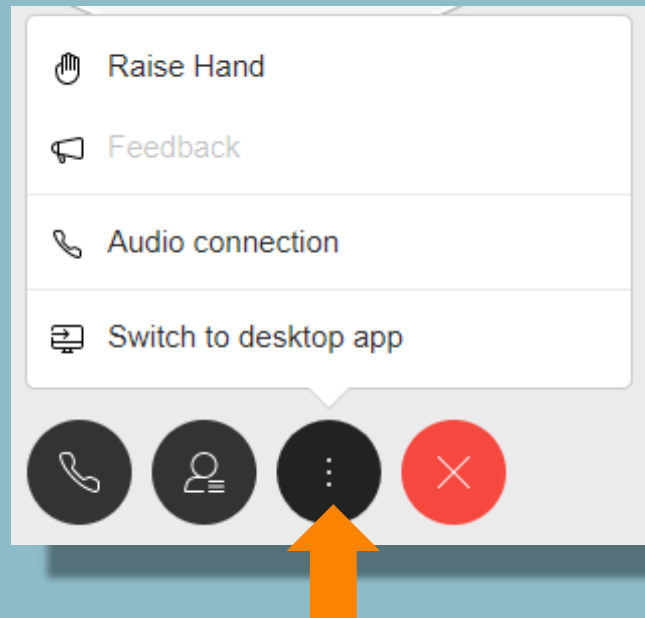
HOW YOU CAN ASK QUESTIONS, PROVIDE COMMENTS

1 Type your question or comments in the “Q&A” box

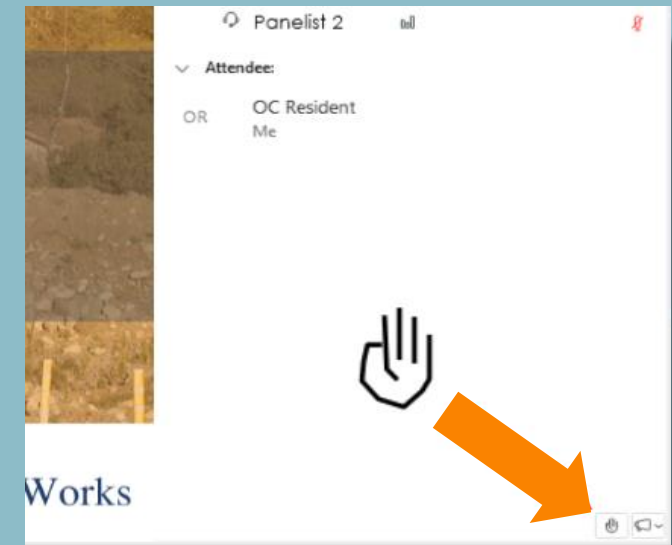


Or 2 Click “Raise Hand” option

- Click “three dots” icon
- Click “Raise Hand”



- Click/expand “Participants” box
- Then click small “hand” icon in bottom-right corner



Or 3 If only listening on phone: Dial *3 (“star 3”)



THANK YOU



J.F. SHEA
Construction

Tt TETRA TECH



OC Public Works