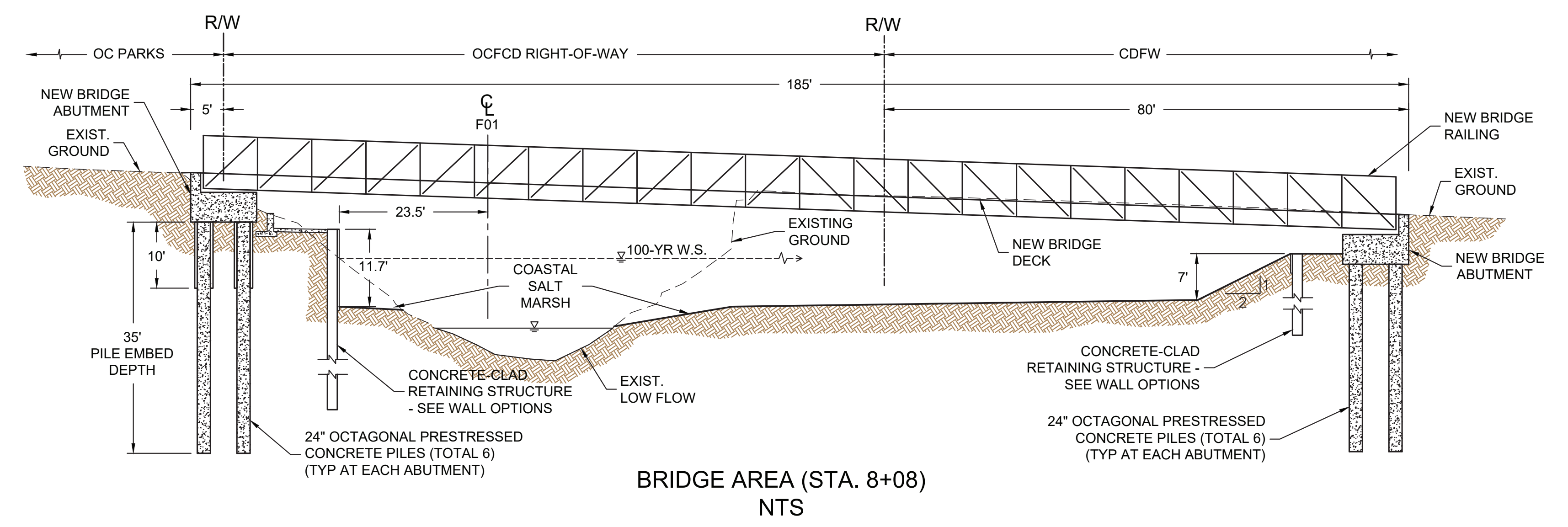
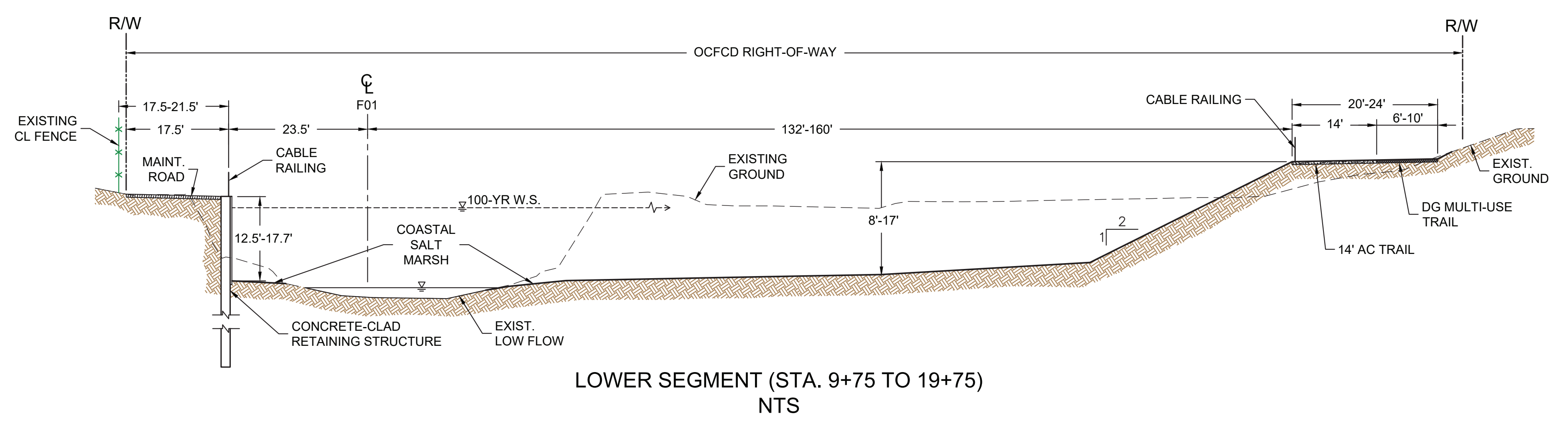
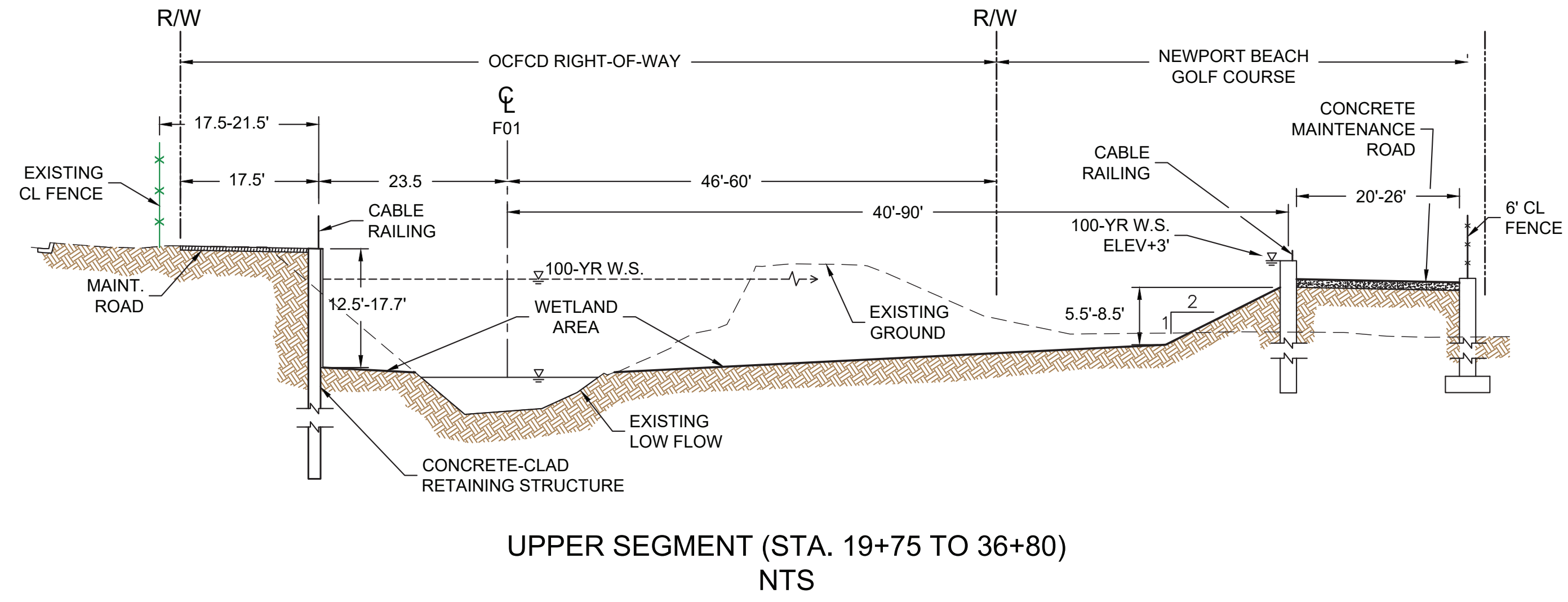


Santa Ana-Delhi Channel Improvement Project



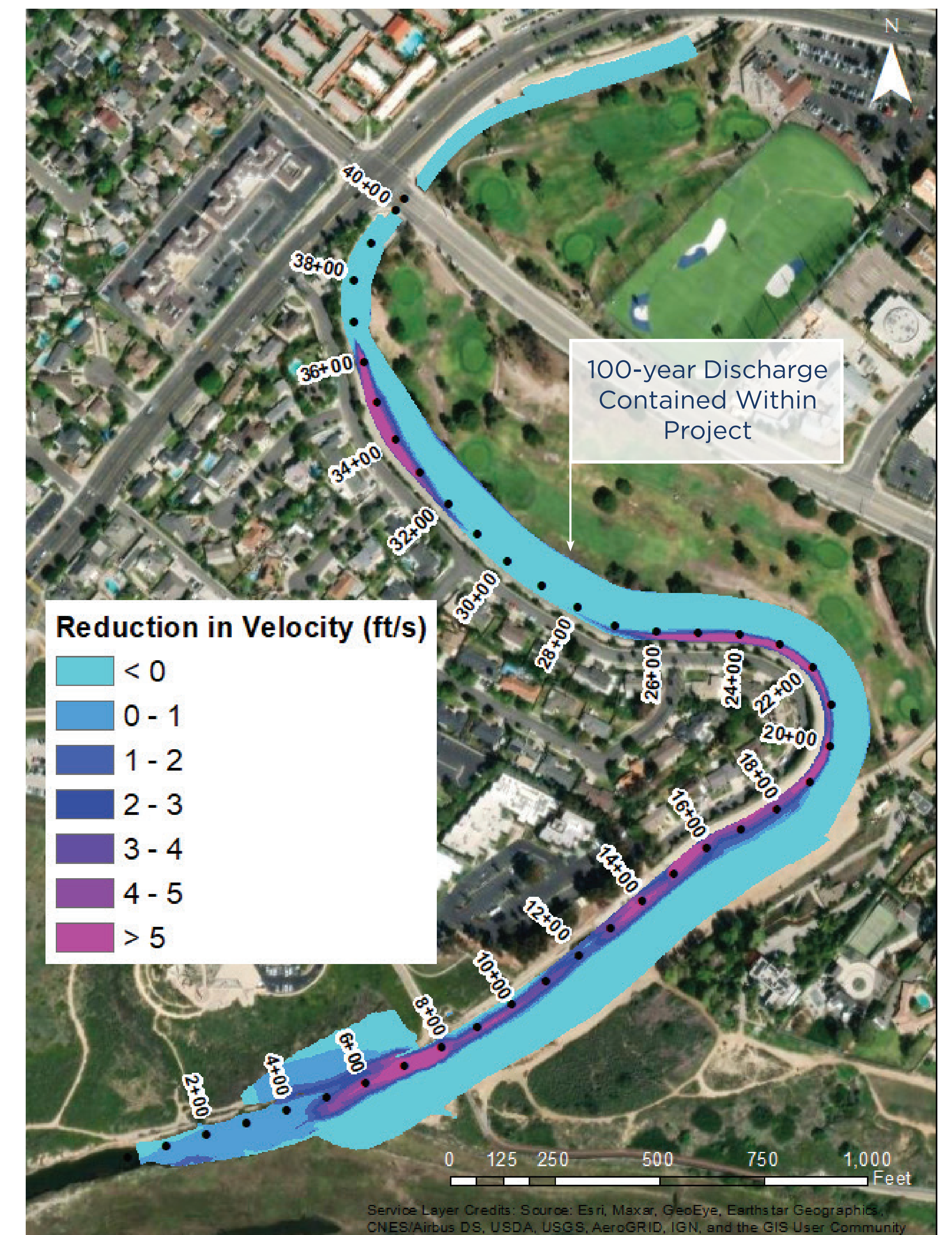
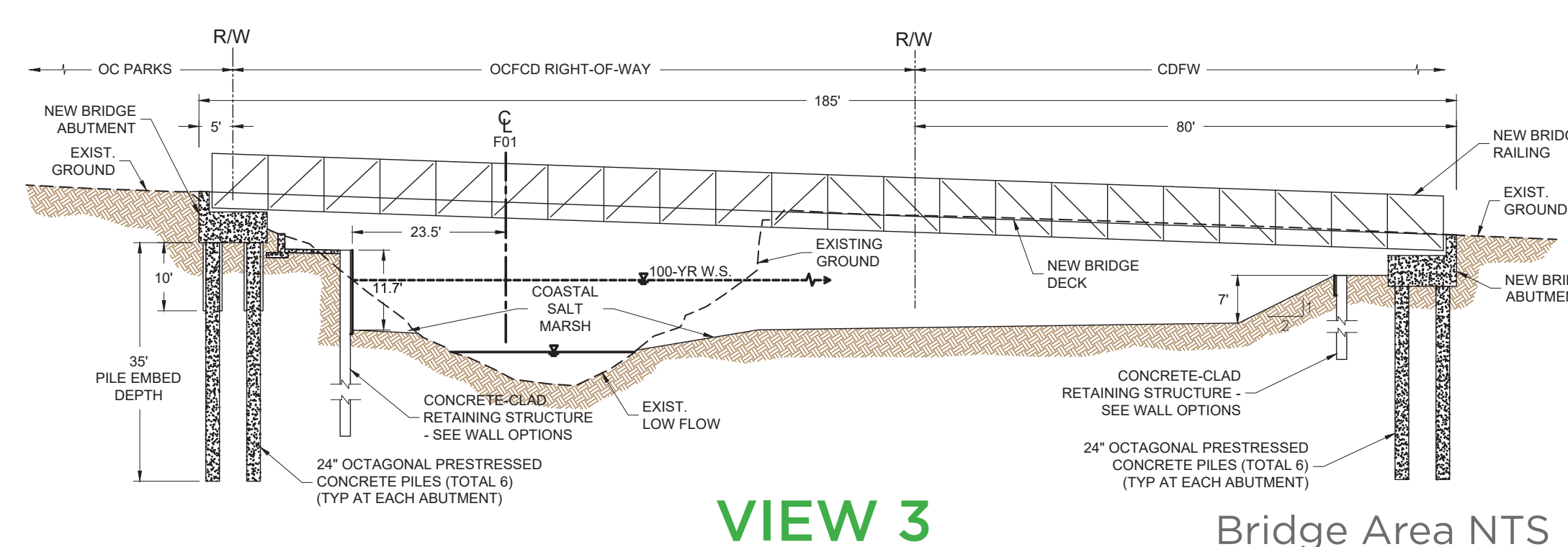
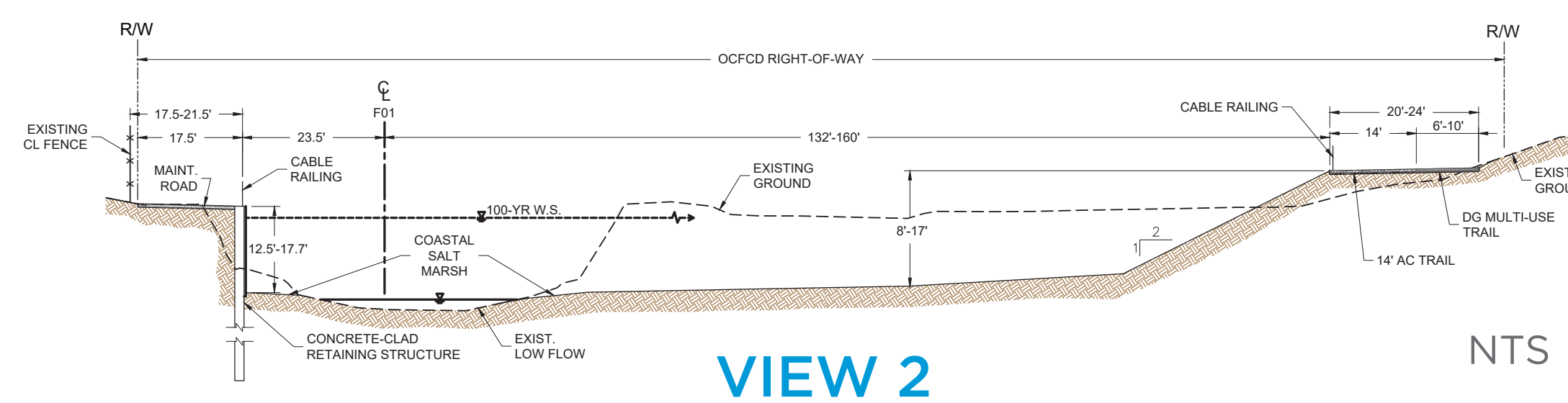
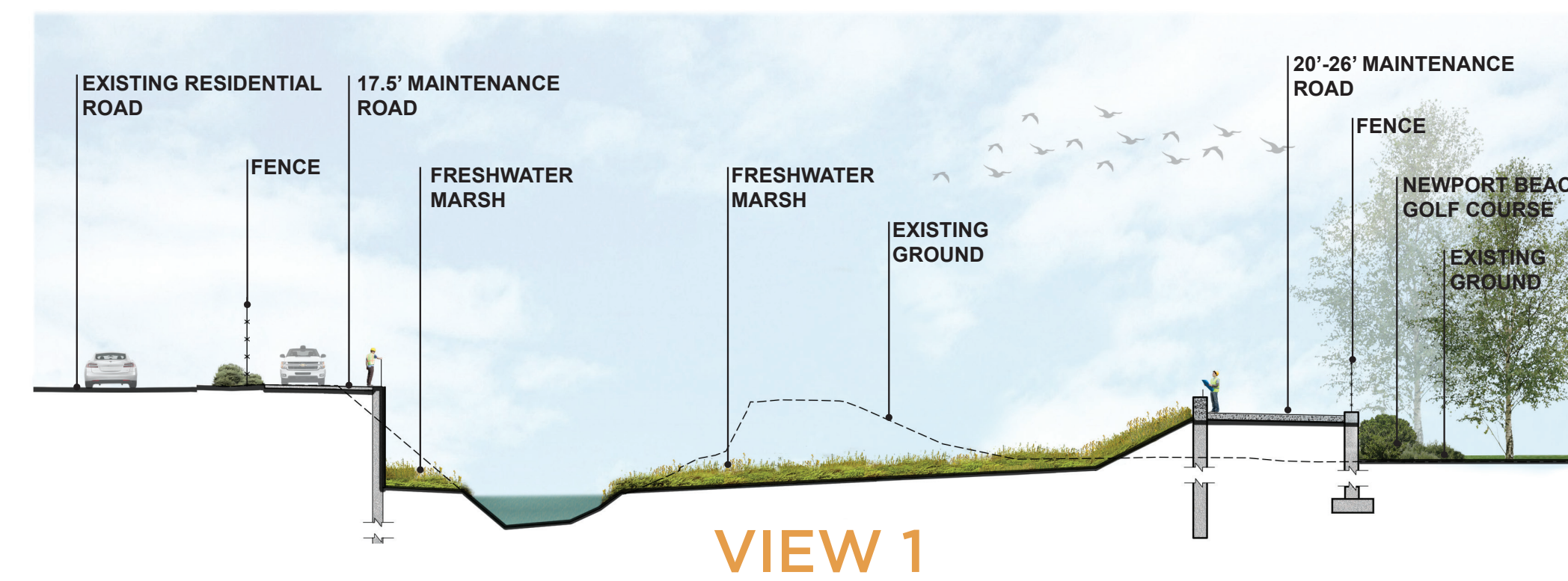
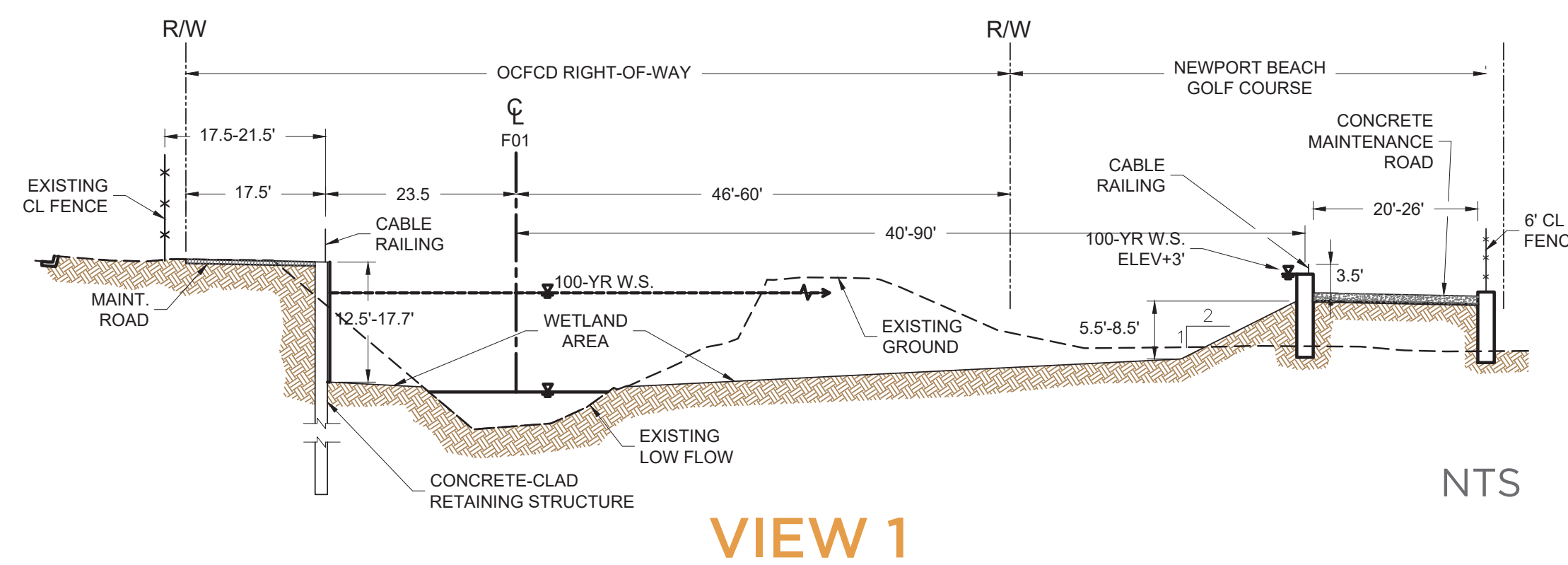
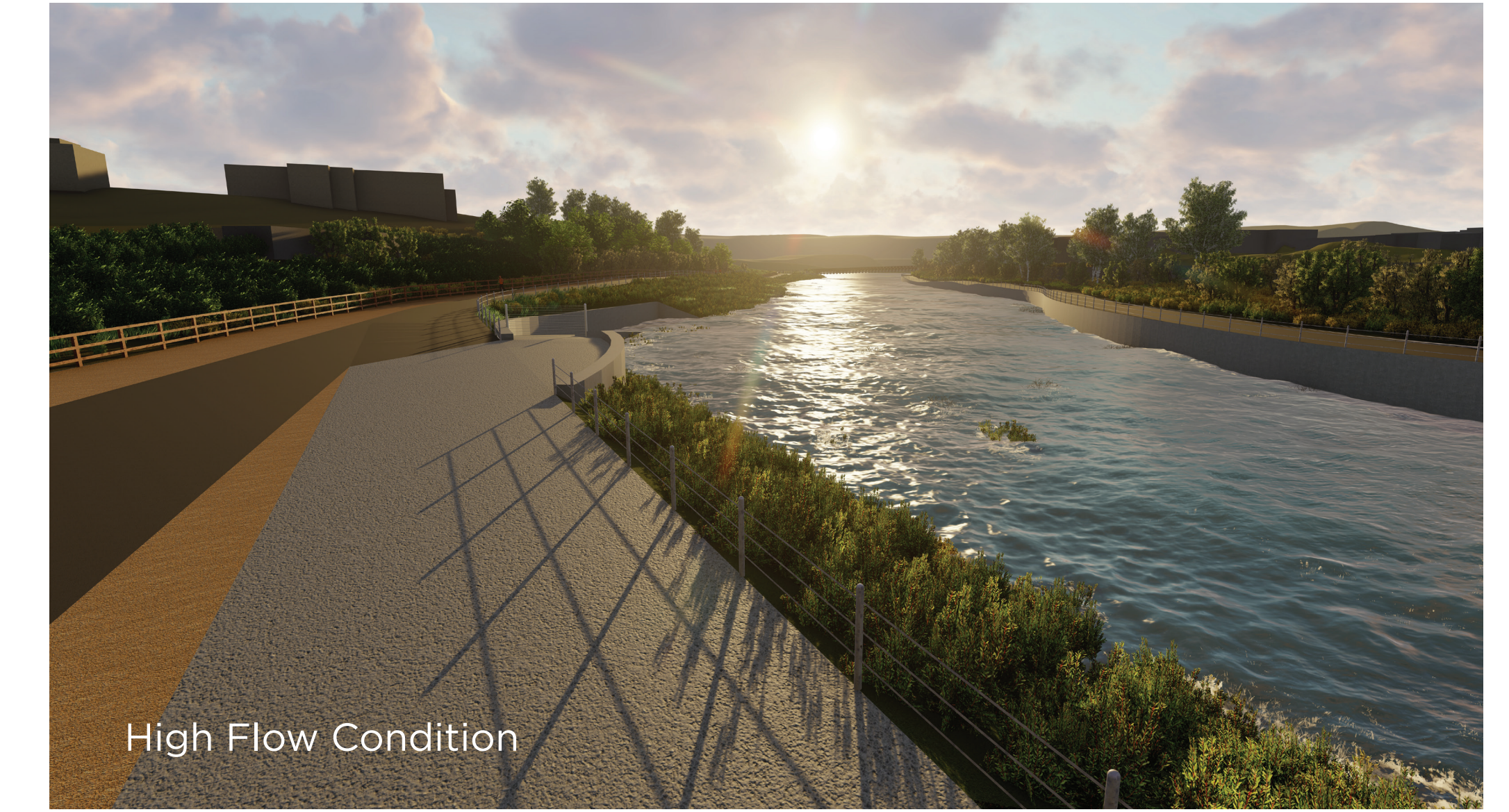
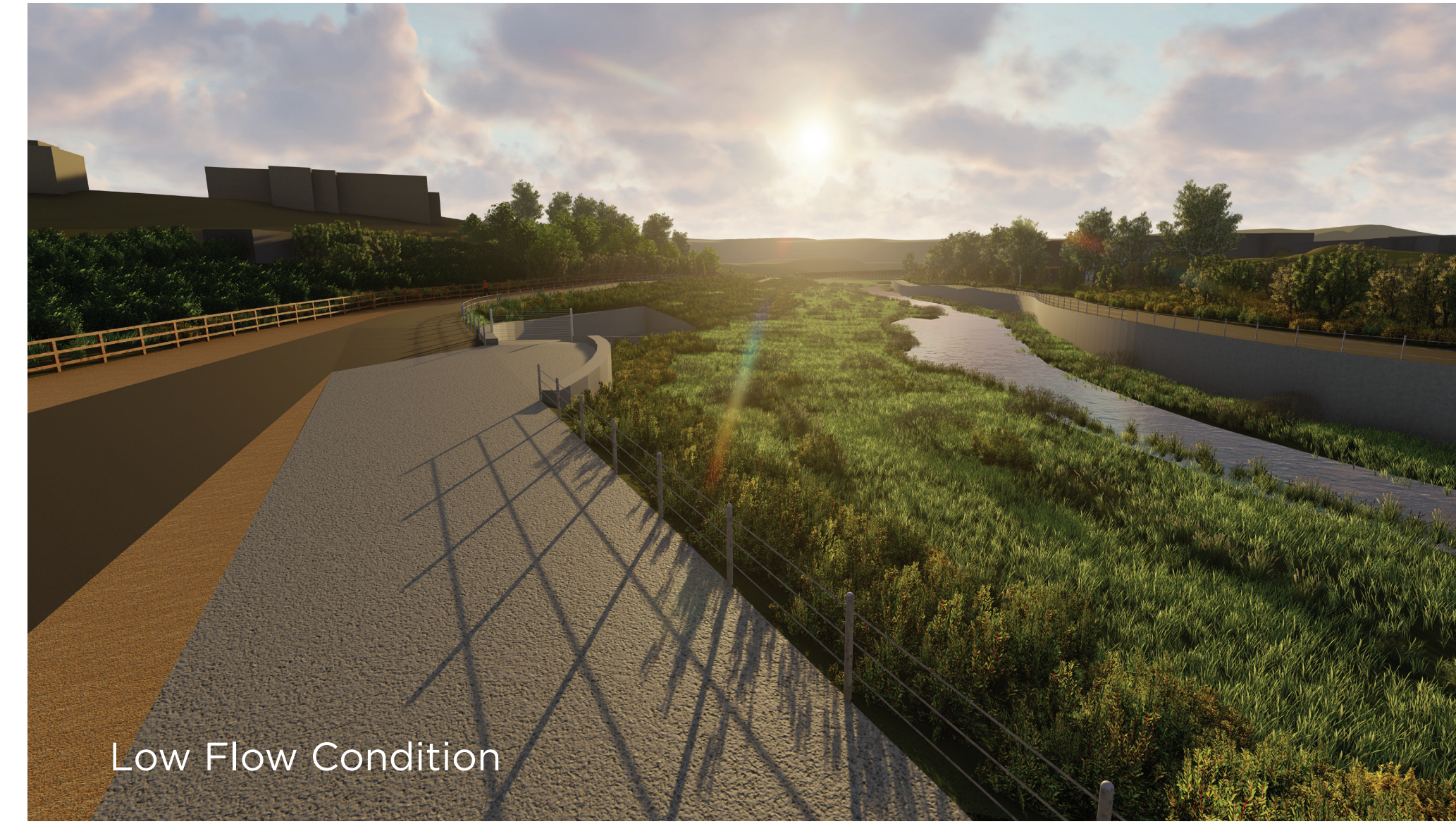
Project Design Overview



Flood Control

Flood Control Improvements and Project Benefits:

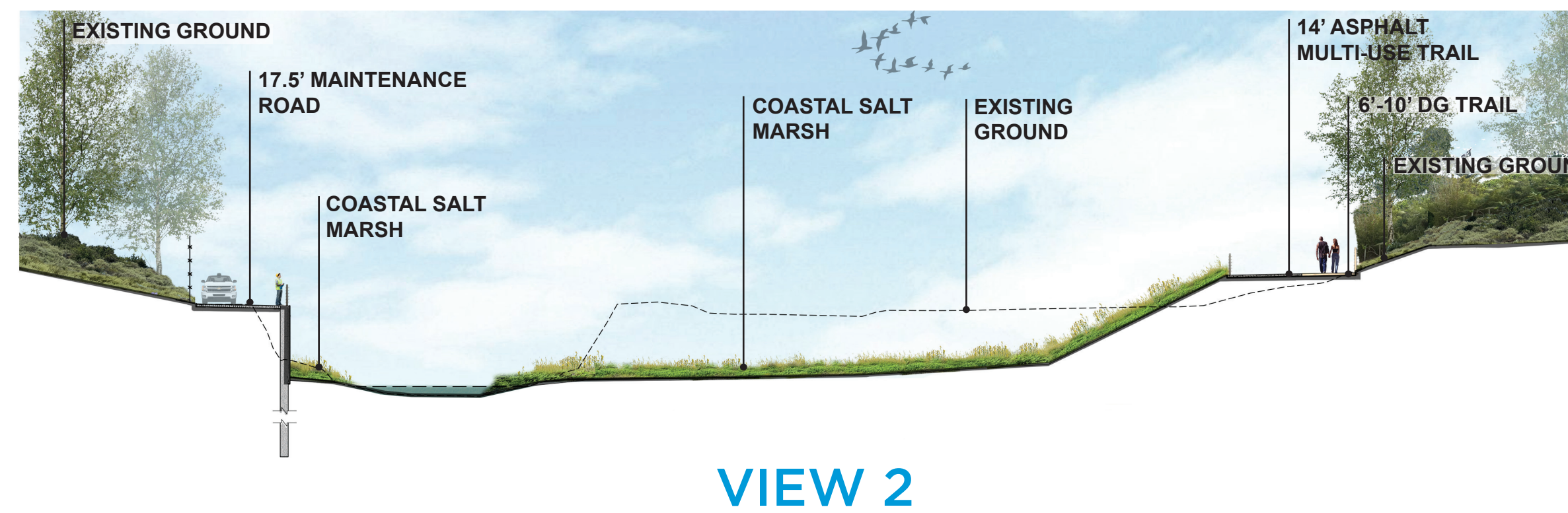
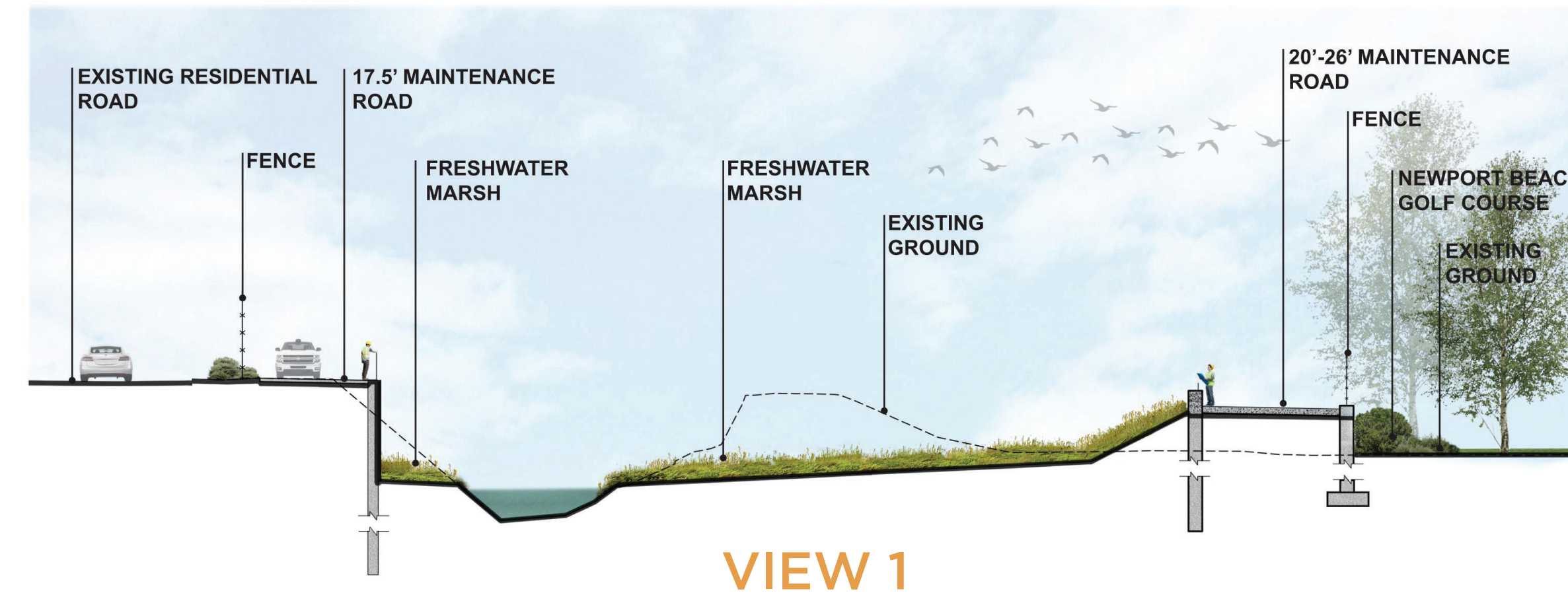
- 1 The project will fully convey the 100-year discharge from Mesa Drive to the Bayview Trail Bridge and reduce the 100-year water surface elevation by approximately 2 feet.
- 2 Widened channel section provides for a reduction in average channel velocities to allow for stable freshwater and coastal habitat creation. Velocity reductions are highest around the Bayview Trail Bridge and within the "Horseshoe" bend near Birch Street.
- 3 Stabilized banks reduce sediment to the bay.



Environmental and Habitat Restoration

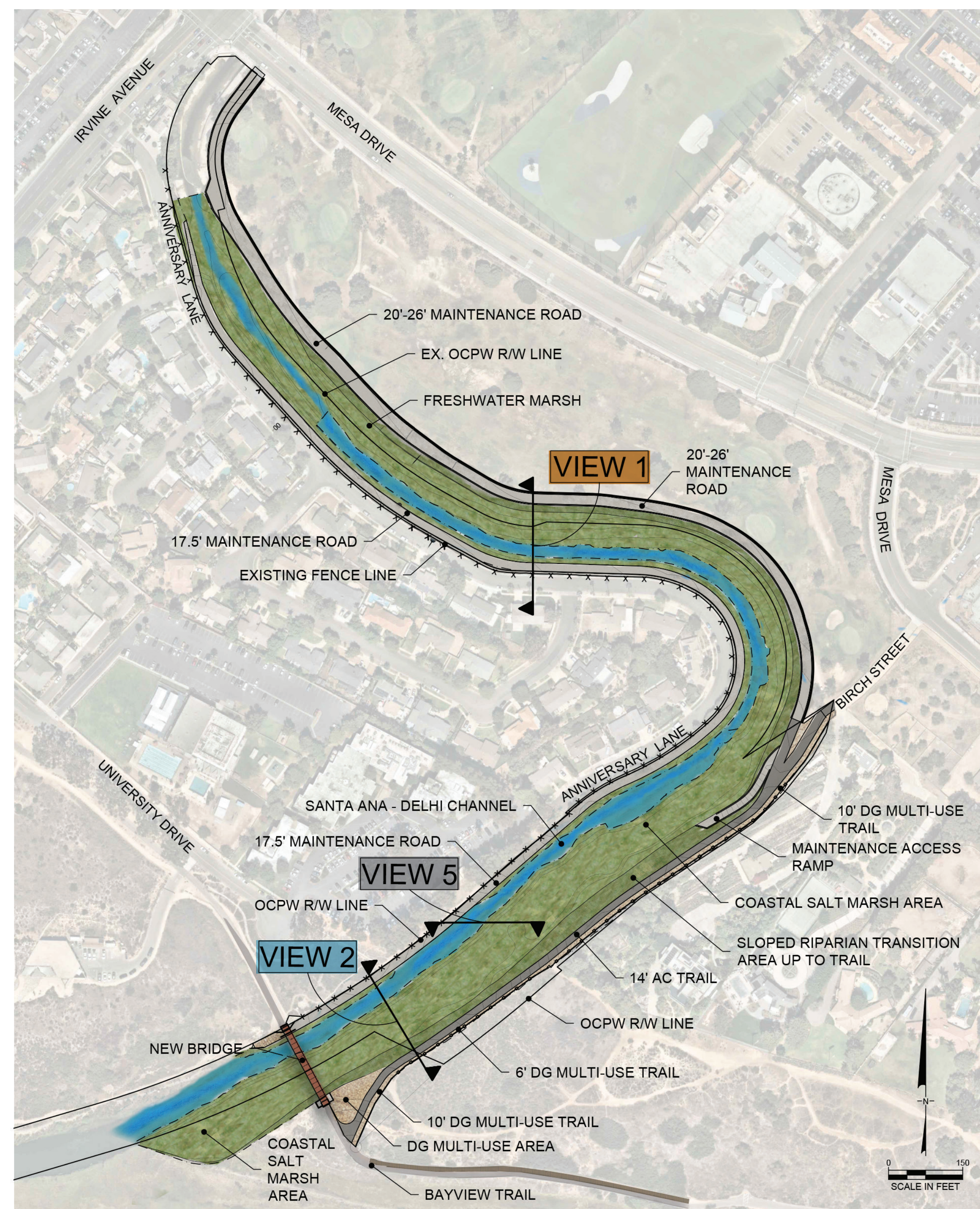
Environmental and Habitat Restoration Project Benefits:

- 1 The project adds over 5 acres of freshwater marsh and coastal salt marsh habitat and additional native riparian upland transitions.
- 2 The channel improvements will use native plant materials along vegetation gradients matching the plant communities of the Back Bay to support species diversity, pollinators, and adding valuable habitat for use by sensitive and rare species.
- 3 The project adds significant contiguous coastal salt marsh habitat to the Upper Newport Bay Ecological Reserve (Back Bay area).

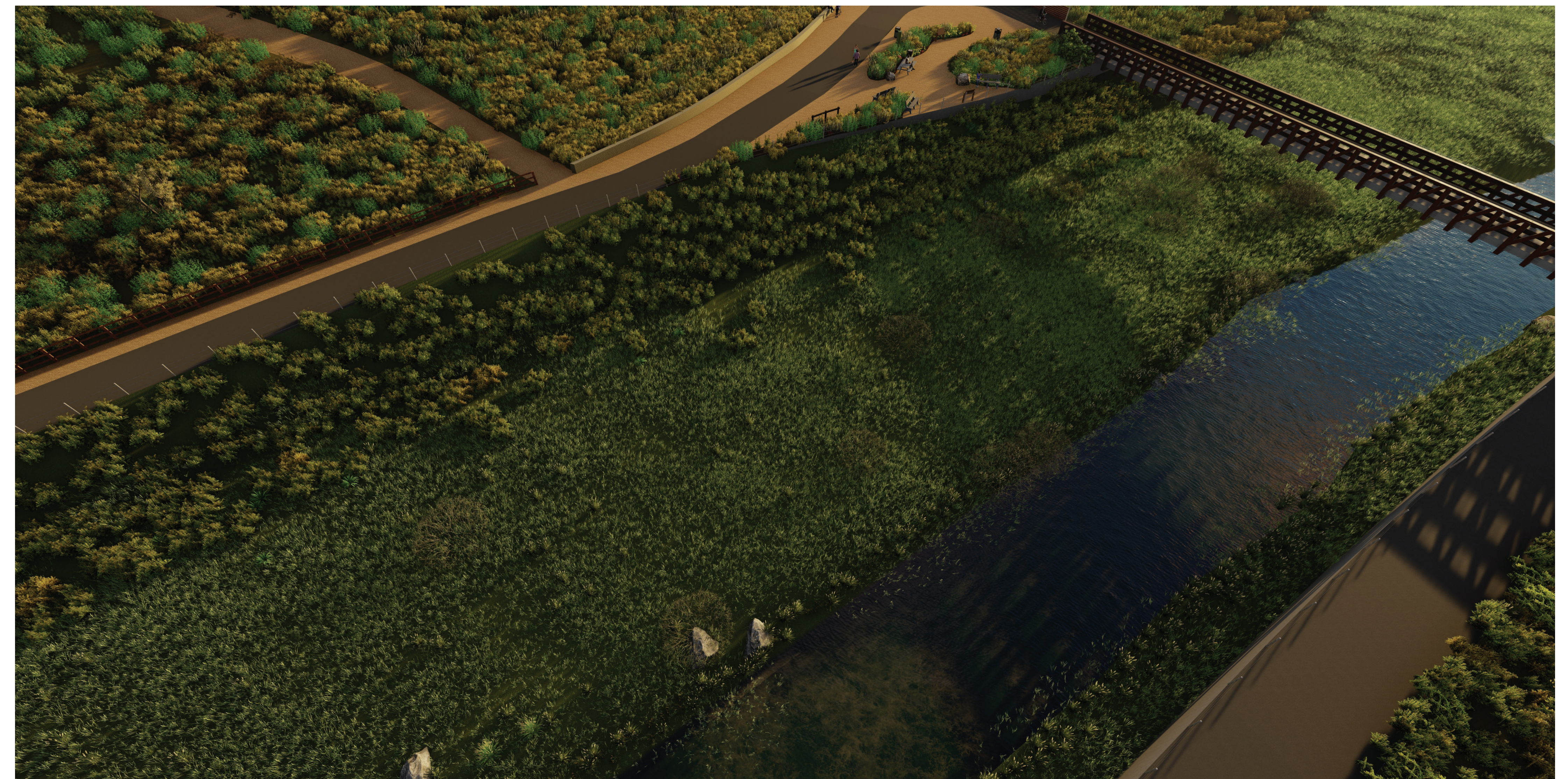


Back Bay Habitat Facts:

- 1 The Back Bay is home to over 200 bird species year-round and over 30,000 migrating birds use the Back Bay as a stop over on the Pacific Flyway in Winter.
- 2 The restoration of habitat along the Santa Ana-Delhi Channel will provide additional valuable habitat for bird, mammal, reptile, and aquatic species.



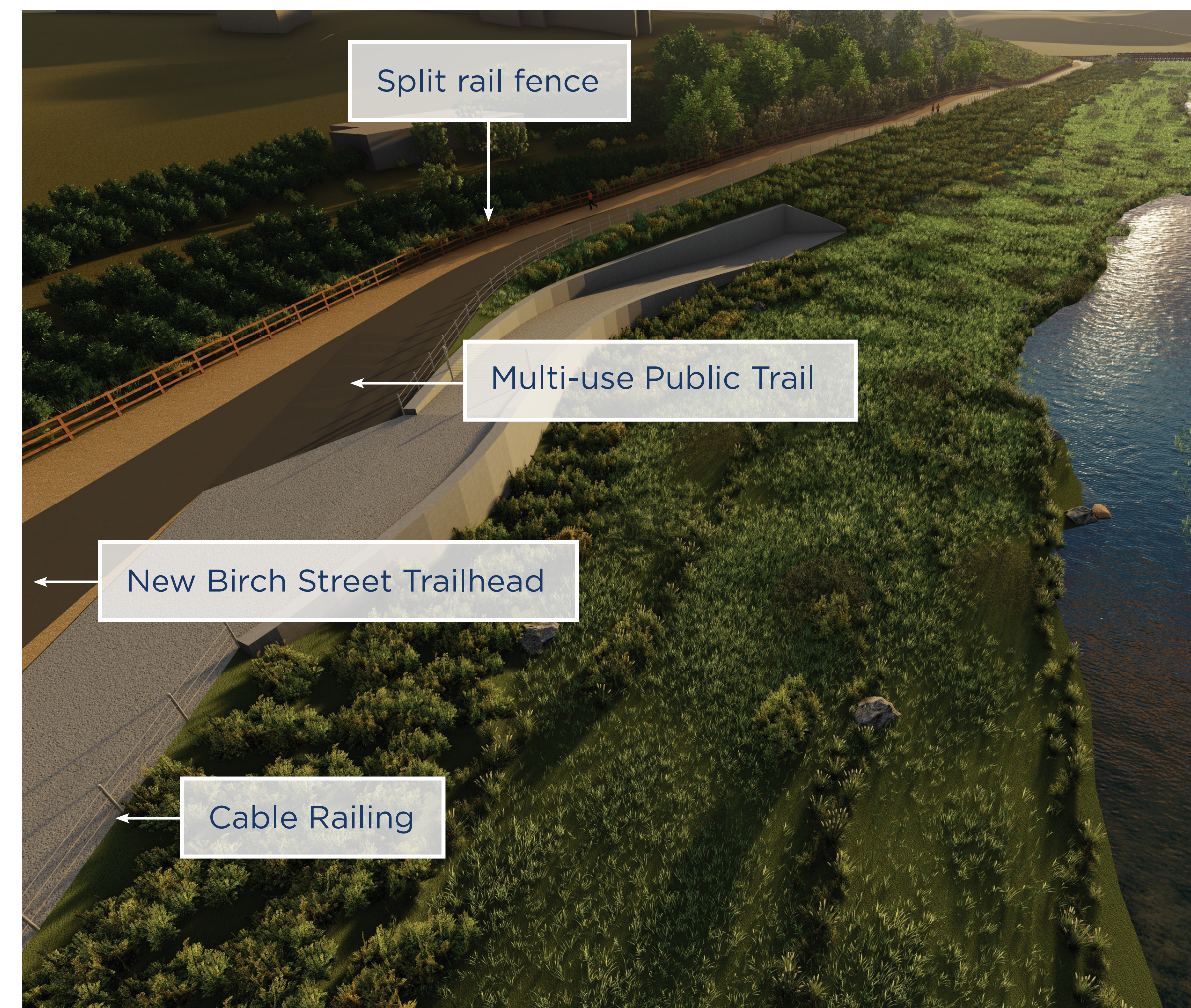
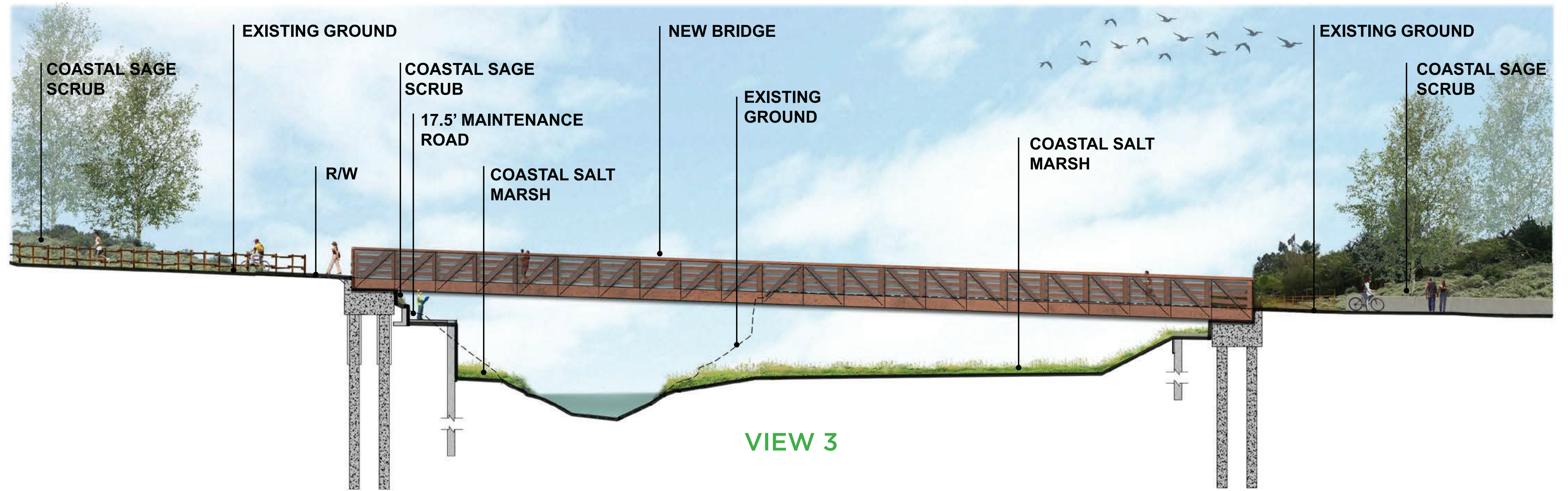
VIEW 5



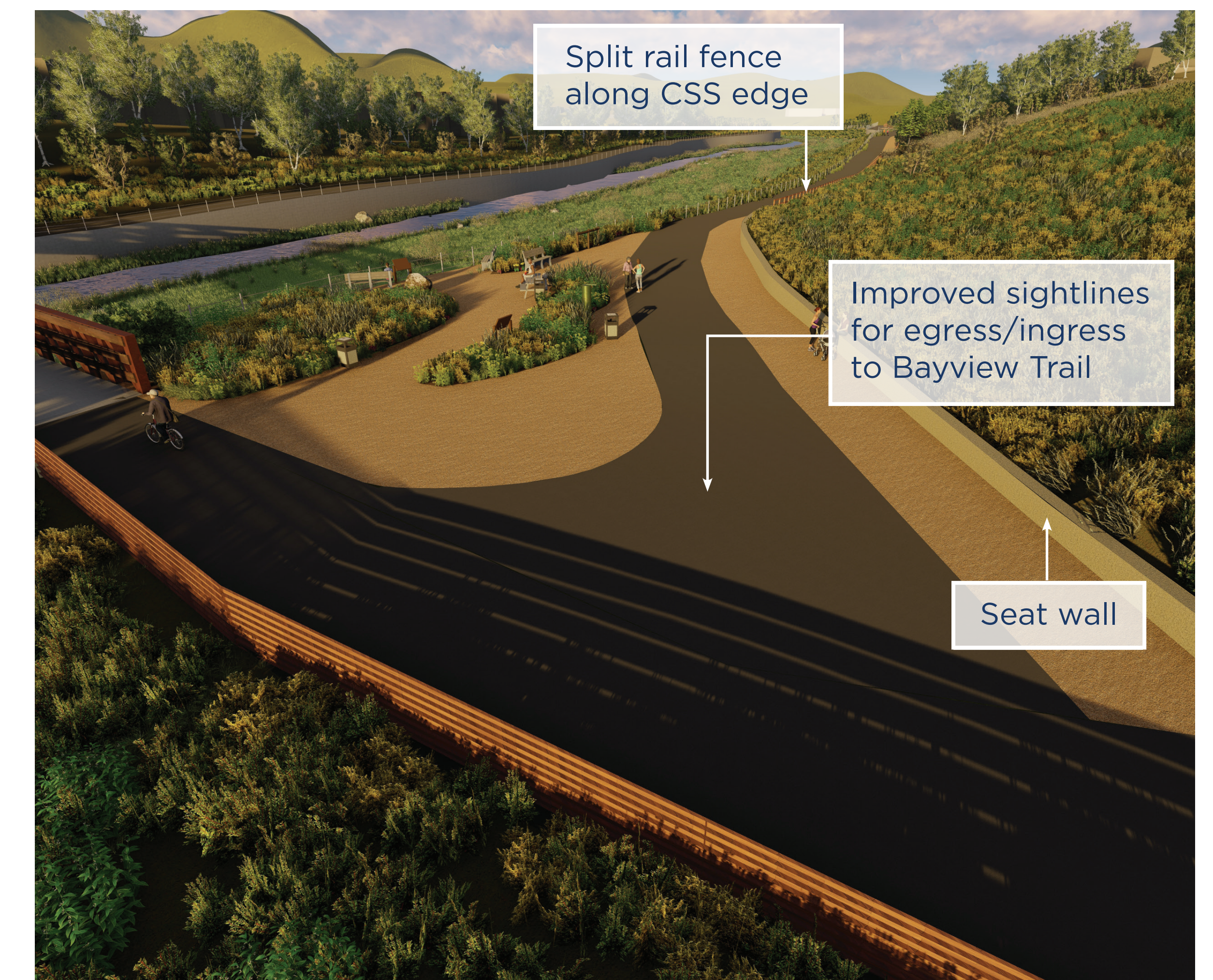
Trails & Recreation

Project Benefits:

- 1 Replace Bayview Trail Bridge with a new ~180-ft long single span bridge.
- 2 New multi-use trail connection between Birch Street and the Bayview Trail.
- 3 New multi-use trail provides equestrian and pedestrian access along Santa Ana-Delhi Channel with improved aesthetics from the restored channel and habitat.
- 4 Improves access to pedestrian hiking trails off of Bayview Trail on OC Parks side of channel.



VIEW 6

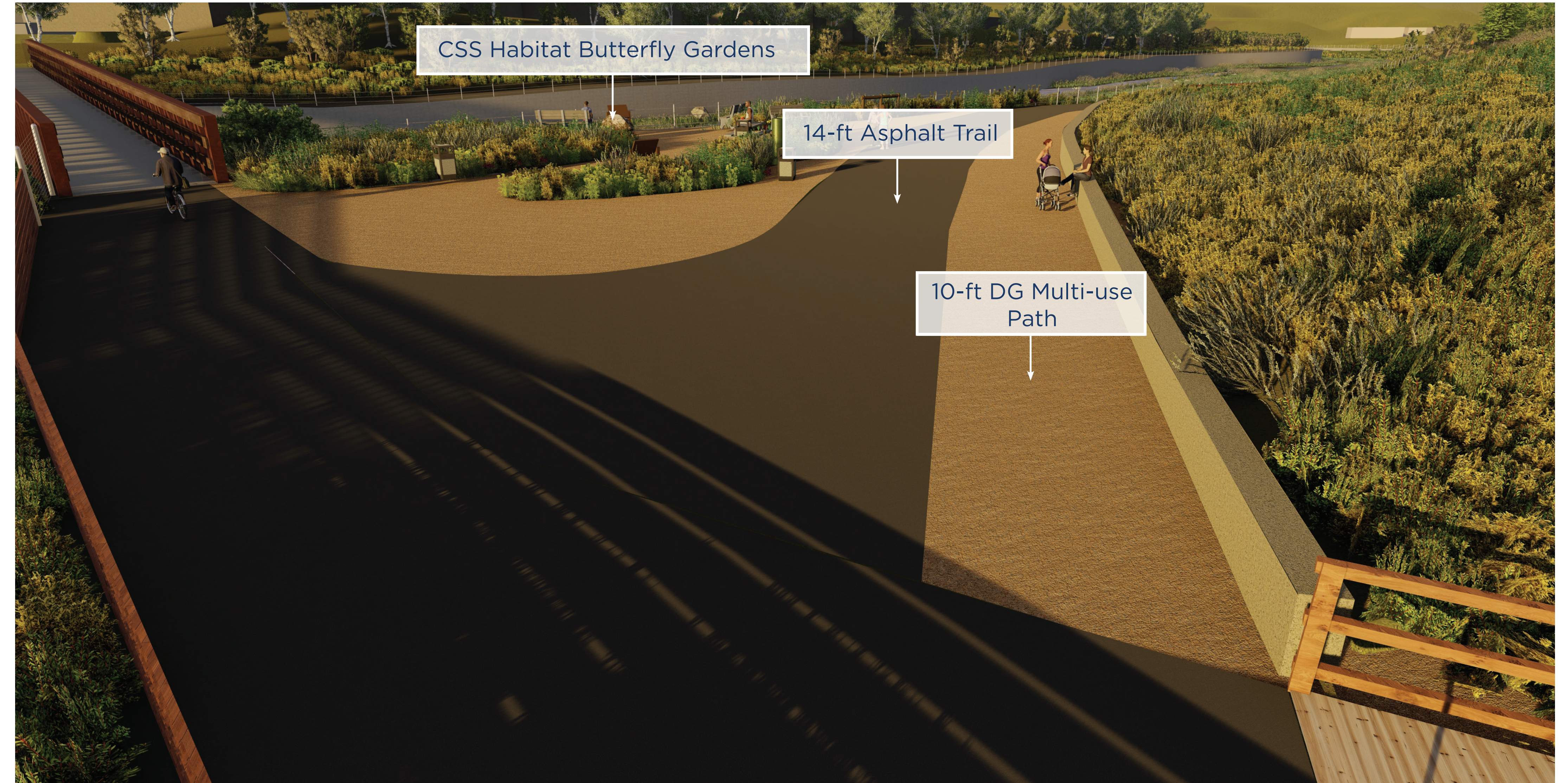


VIEW 7

Bayview Trail Multi-use Area

Bayview Trail Multi-use Project Benefits:

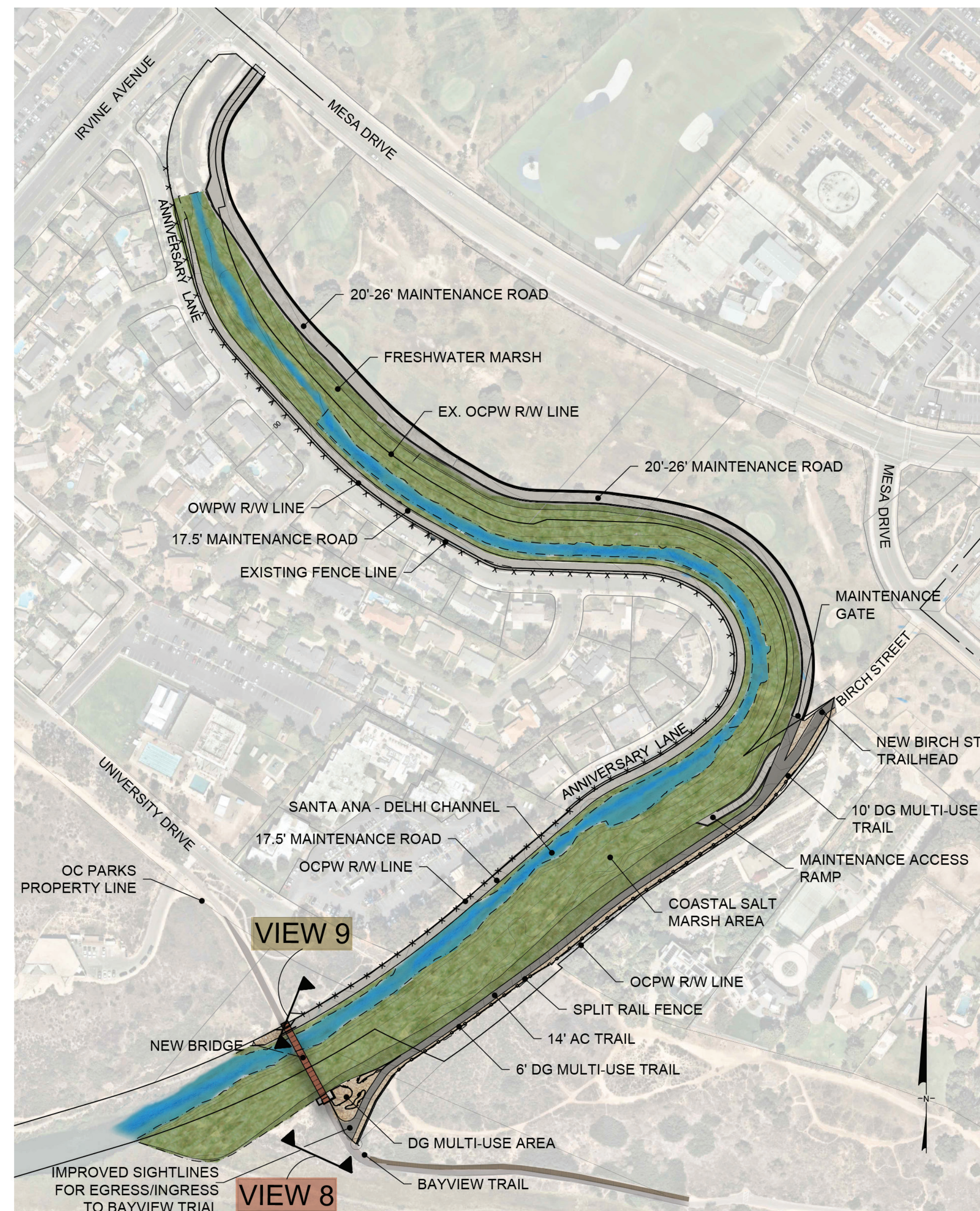
- 1 Improves trail users' transition to bayview trail and new bridge.
- 2 Improves sight lines for ingress and egress to the Bayview Trail.
- 3 Provides habitat restoration education focal point and viewing area of habitat restoration.
- 4 Provides native planting areas to benefit butterflies and pollinators adjacent to trail.
- 5 Improves trail maintenance and emergency vehicle access and turnaround capability.



VIEW 8



VIEW 9



Bayview Trail Multi-use Area

