

Enhancing Flood Protection: Huntington Beach and Talbert Channels Sheet Pile Repair Project

Virtual Community Meeting | August 26, 2021



REYES CONSTRUCTION, INC.
General Contractor • License No. 507361



 **Public Works**

WELCOME – THANK YOU FOR JOINING US!

Getting you started: Guidelines for today's meeting

Your Presenters



Shannon Widor
Communications



Tho Tran
Project Management

Participating Key Staff:

Amit Verma – Project Management

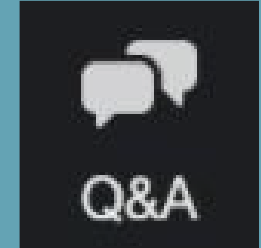
Guidelines for today's meeting

- 1 Today's presenters will move through various information slides
- 2 Attendees' phones are muted to avoid interruptions; please hold questions until Question & Answer period
- 3 During Question & Answer period, presenters will call on attendees who "raise hand" to ask questions/provide comments
- 4 Please be respectful of others' viewpoints and comments

HOW YOU CAN ASK QUESTIONS, PROVIDE COMMENTS

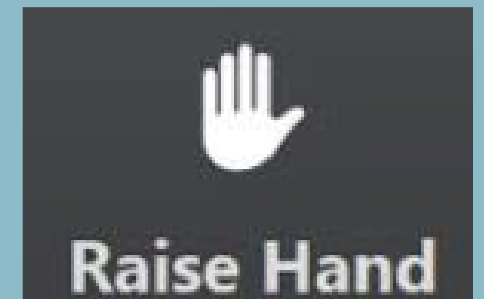
1 Click the Q&A button

- Type your first and last name, then type your questions



Or 2 Click “Raise Hand” option

- Wait for host to call on you to speak
- Unmute yourself by clicking “Unmute,” state your first and last name, and ask your question
- When done, click the “Lower Hand” button and place yourself on mute by clicking “Mute”

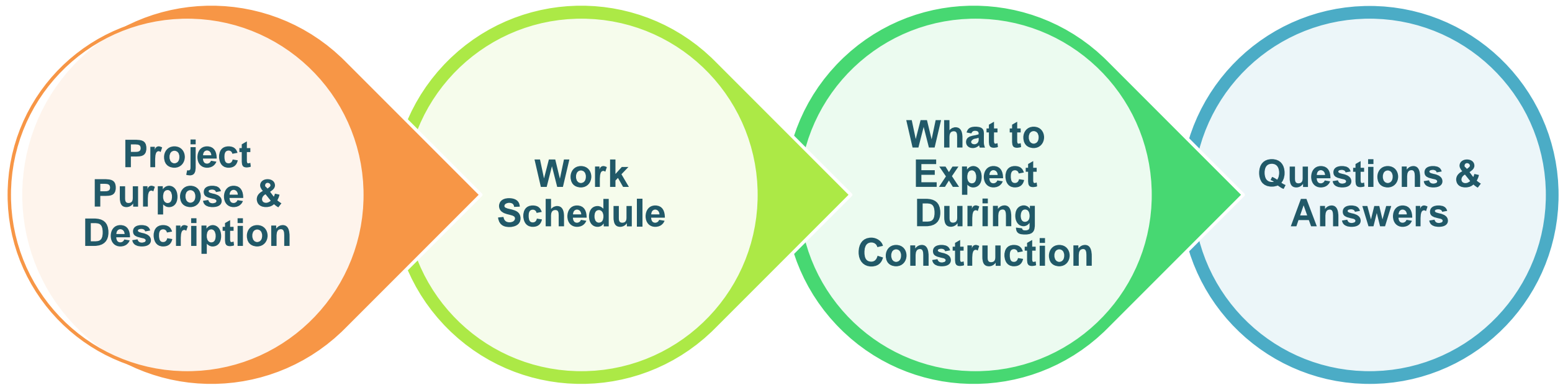


Or 3 If you joined by calling in **on a phone**, raise your hand by pressing *9

- When the host calls on you, unmute your microphone by pressing *6, then state your first and last name, and ask your question
- To lower your hand, press *9 and place yourself on mute by pressing *6



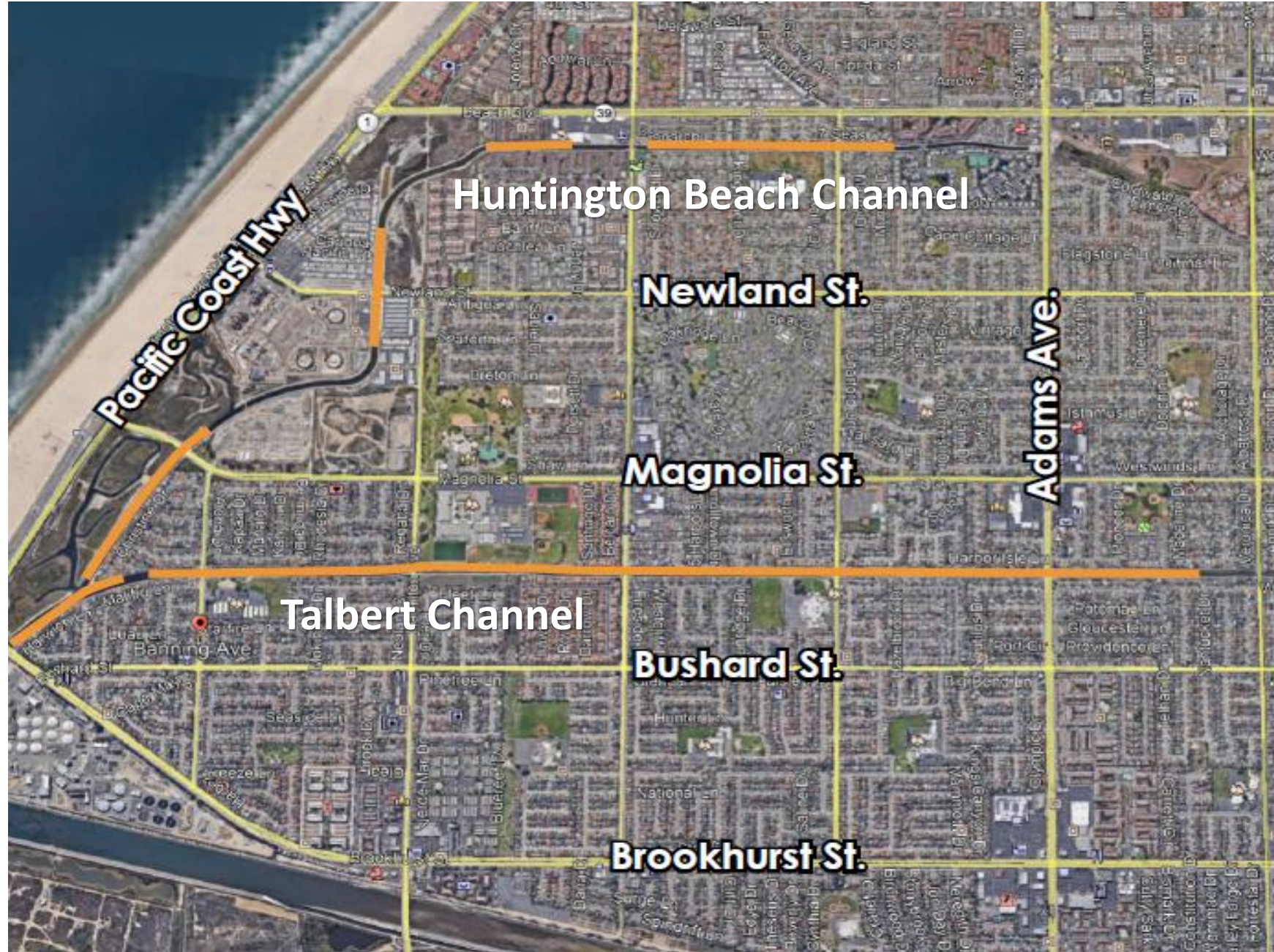
WHY WE ARE HERE TODAY



**BACKGROUND +
DESCRIPTION**



PROJECT LOCATION



PROJECT BACKGROUND

1959-1966: Earthen Trap. Channel Constructed

1993-2007: Sheet Piles Constructed

1995-2012: "Cathodic Protection" Implemented
(Technique to control metal corrosion)

2014-2016: Series of routine visual inspections observed corrosion

2017-2019: Structural firm hired to evaluate sheet piles (demonstrated a need to repair)

CORROSION EXAMPLES



PROJECT GOALS AND OBJECTIVES

- REPAIR & REPLACE REACHES OF CORRODED STEEL SHEET PILES THAT HAVE A LIFE EXPECTANCY OF LESS THAN 10 YEARS
- SECURE RENEWAL OF LEVEE CERTIFICATION AND MAINTAIN CURRENT FLOOD PLAIN AS DESIGNATED BY FEDERAL EMERGENCY MANAGEMENT AGENCY (FEMA)
- ELIMINATE HOMEOWNERS' NEED TO PURCHASE FLOOD INSURANCE

LIMITS OF EXISTING FEMA FLOOD PLAIN

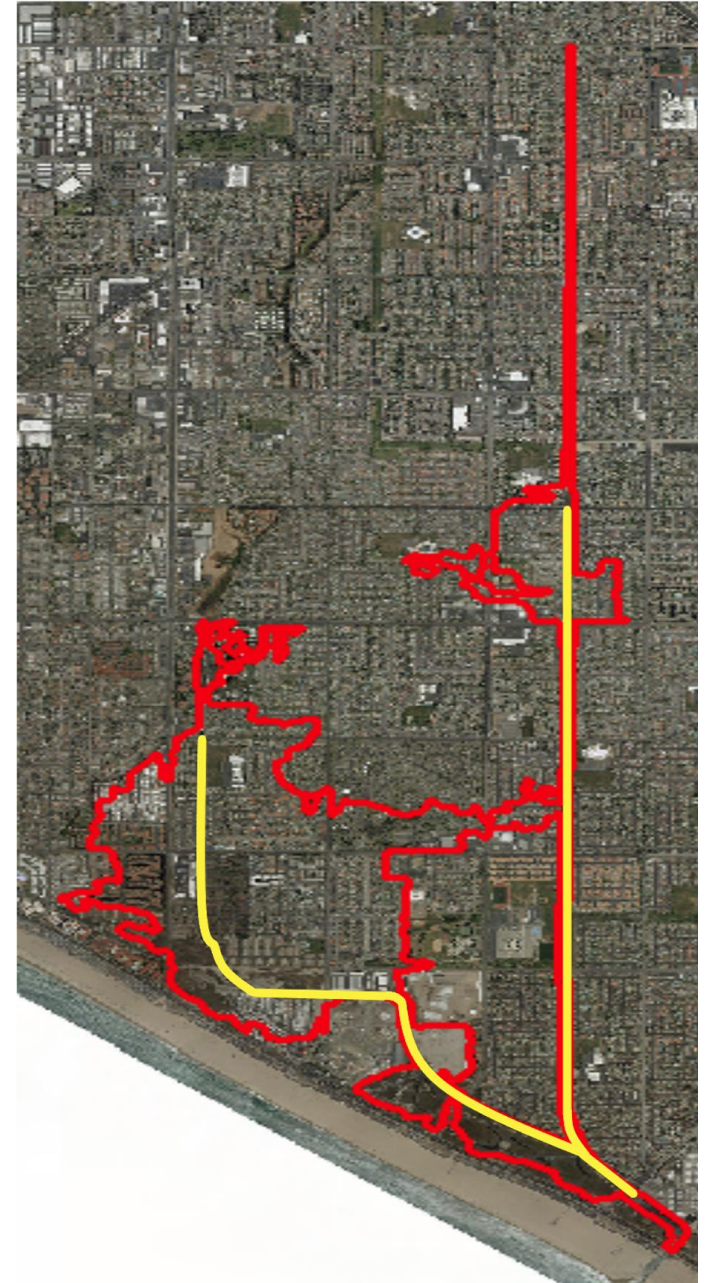


POTENTIAL FLOODPLAIN IMPACT

- De-certification of floodplain
- 3,087 structures will be added to the flood plain



Homeowners shall be required to pay for flood insurance



PROJECT COMPONENTS

- 1 Installation of steel sheet piles**
- 2 Installation of new drainage system**
- 3 Installation of sheet pile cover (pile cap)**
- 4 Installation of cable railing and chain link fences**

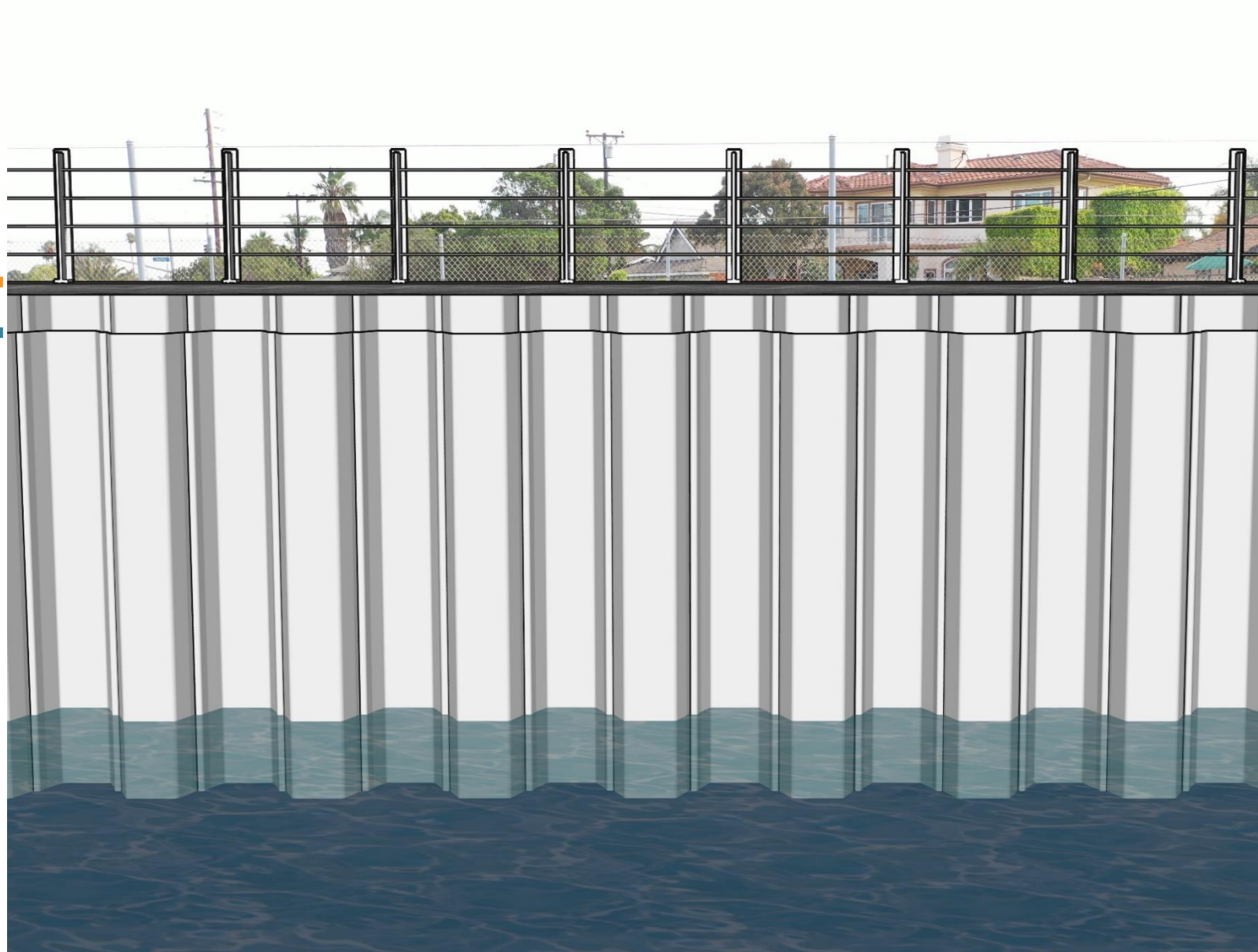
PROJECT IMPROVEMENTS

CHANNEL SIDE VIEW

New
Existing

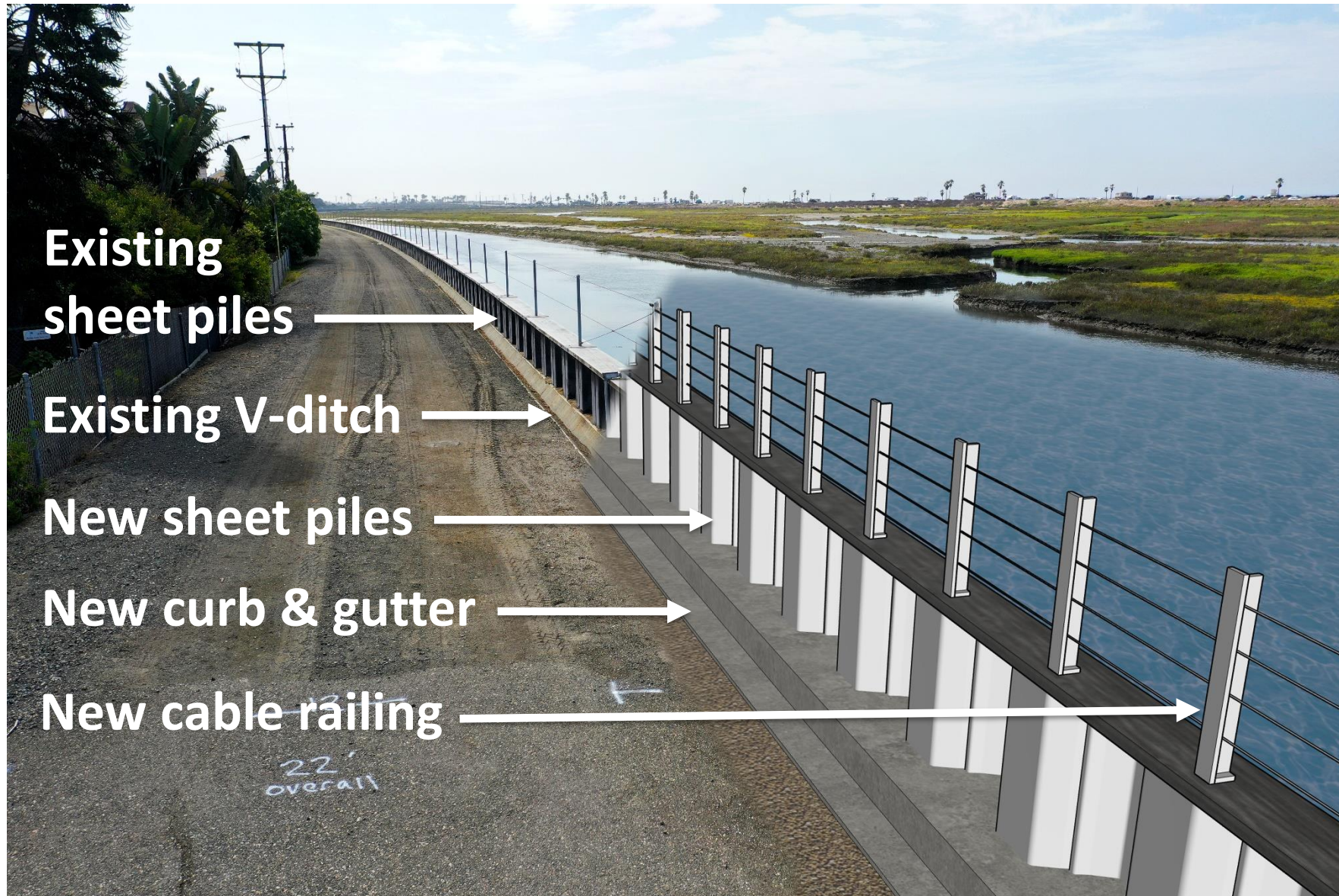


Typical
6-inch
difference



PROJECT IMPROVEMENTS

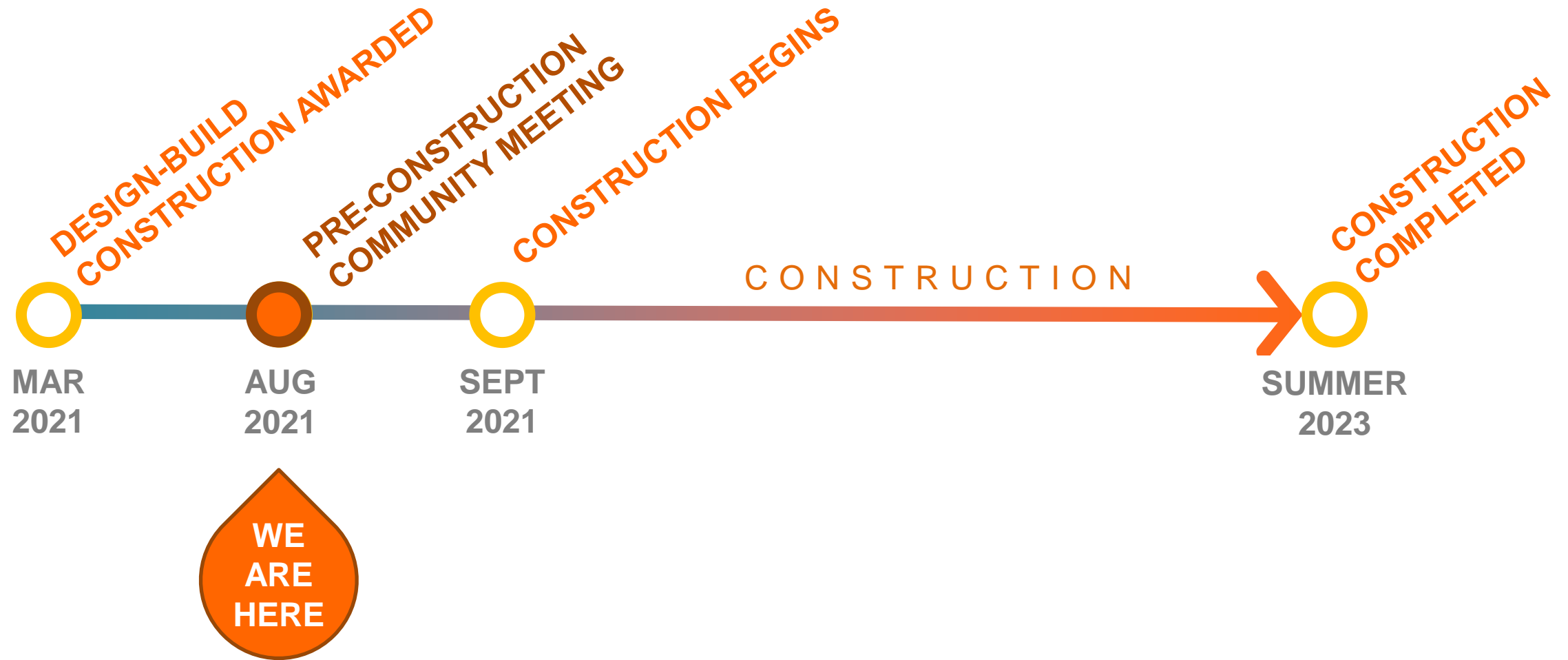
MAINTENANCE SIDE VIEW



PROJECT SCHEDULE



DESIGN-BUILD PROJECT DELIVERY



PROJECT TIMELINE

WORKING DAYS, HOURS & DURATION

Working Days: Monday - Friday

Occasional Saturdays if necessary

Working Hours: 7 a.m. – 5:30 p.m.

Construction Duration: Sept 2021 – Summer 2023

Schedule subject to change due to weather and other factors

WHAT TO EXPECT DURING CONSTRUCTION



STEEL SHEET PILE INSTALLATION



**POWER
PACK**

**CRAWLER CRANE:
MOVE MATERIAL**

**GIKEN:
SILENT PILER**

**EXCAVATOR:
MOVE MATERIAL**



**VIBRATORY
HAMMER**

WHAT TO EXPECT DURING CONSTRUCTION

Measures to Control Dust

Regular site watering
to control excess dust



WHAT TO EXPECT DURING CONSTRUCTION

Temporary Bridge Closure

Pedestrian bridge adjacent to John H. Eader Elementary School



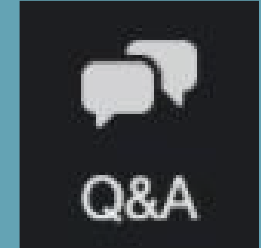
QUESTIONS & ANSWERS



HOW YOU CAN ASK QUESTIONS, PROVIDE COMMENTS

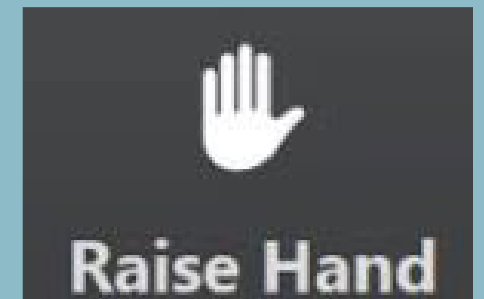
1 Click the Q&A button

- Type your first and last name, then type your questions



Or 2 Click “Raise Hand” option

- Wait for host to call on you to speak
- Unmute yourself by clicking “Unmute,” state your first and last name, and ask your question
- When done, click the “Lower Hand” button and place yourself on mute by clicking “Mute”



Or 3 If you joined by calling in **on a phone**, raise your hand by pressing *9

- When the host calls on you, unmute your microphone by pressing *6, then state your first and last name, and ask your question
- To lower your hand, press *9 and place yourself on mute by pressing *6



CONTACT & PROJECT UPDATES

Website: www.OCPublicWorks.com/HBT

E-mail: ProjectInfo@ocpw.ocgov.com

Phone: 714-245-4500

Social Media:



[Facebook.com/OCPublicWorks](https://www.facebook.com/OCPublicWorks)



[Twitter.com/OCPublicWorks](https://twitter.com/OCPublicWorks)



[Instagram #OCPublicWorks](https://www.instagram.com/OCPublicWorks)



[YouTube #OCPublicWorks](https://www.youtube.com/OCPublicWorks)





THANK YOU



REYES CONSTRUCTION, INC.
General Contractor • License No. 907961



 **Public Works**