



PROJECT OVERVIEW + GOALS:

INTEGRATED SOLUTION

AN OPPORTUNITY TO ADDRESS MULTIPLE ISSUES IN ONE INTEGRATED PROJECT

This collective effort will lead to an attractive public realm that is safer, more useful, more sustainable, and far better for the local environment. Orange County Public Works has listened to local advocates and is responding, in concert with surrounding cities, to reconfigure this corner to serve the entire neighborhood with better stormwater treatment and capacity, pedestrian facilities, and a gathering place for all who live nearby.

WHY ARE WE HERE TODAY?

THIS PROJECT HAS THREE MAJOR ELEMENTS:



1. INTERSECTION + PAVING IMPROVEMENTS

Streetscape improvements will include a complete four-way crosswalk, roadbed grading that improves slope near the curb, and a single, more standardized ADA curb ramp onto the sidewalk. Repaving will also fix roadway wear and tear.



2. STORMWATER BIORETENTION

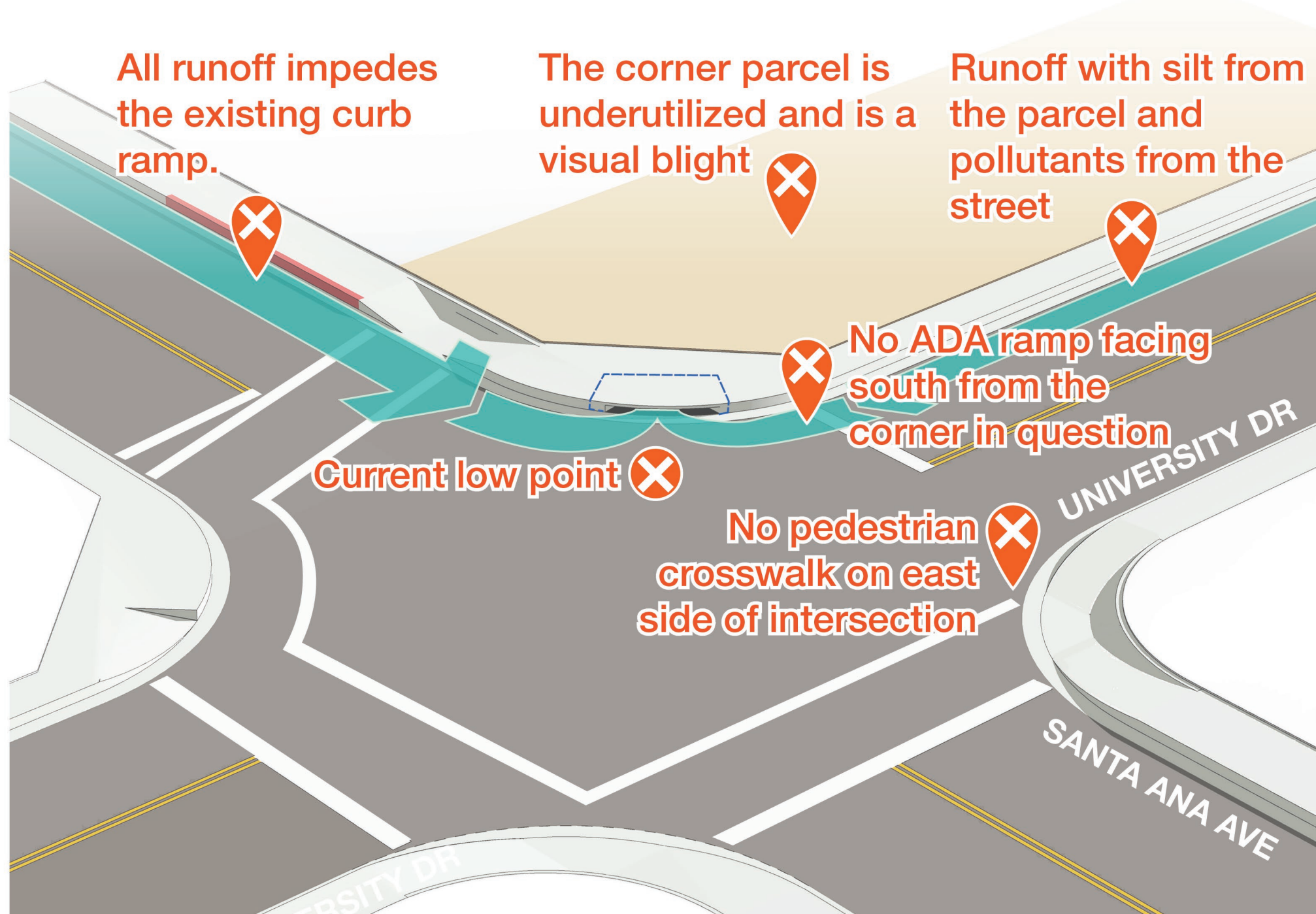
The project includes the relocation of an existing stormwater catch basin to provide for the new crosswalk and ADA curb ramp. Green infrastructure that gathers and filters runoff will be incorporated into the new design to mitigate impacts during storms.



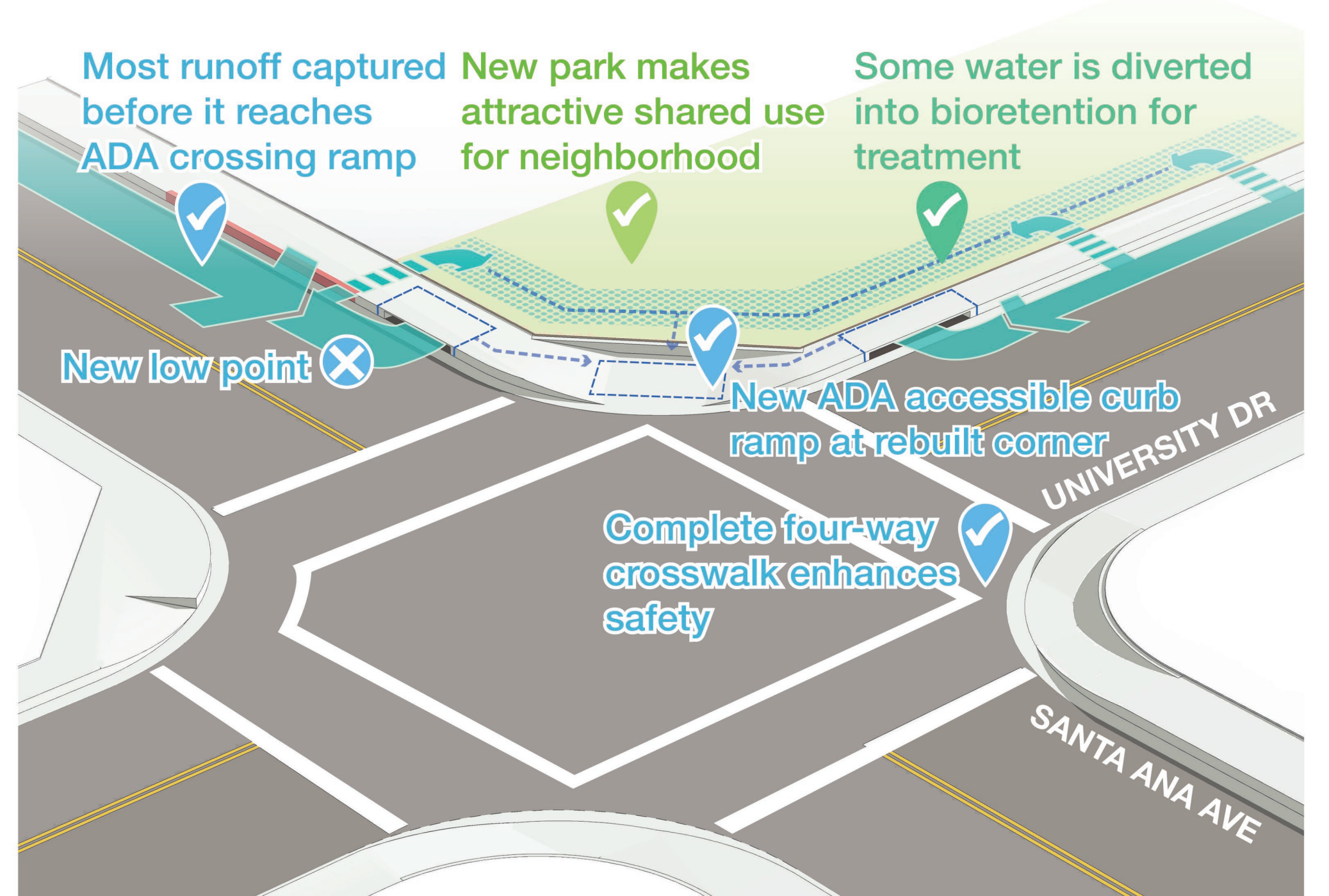
3. COMMUNITY POCKET PARK

A new pocket park will be built by Orange County Public Works and the City of Costa Mesa will take responsibility for its upkeep and use. The pocket park will visually enhance the corner and host community-oriented uses.

HOW WILL THIS BE DONE?



EXISTING CONDITION: STORM DRAIN AT CORNER



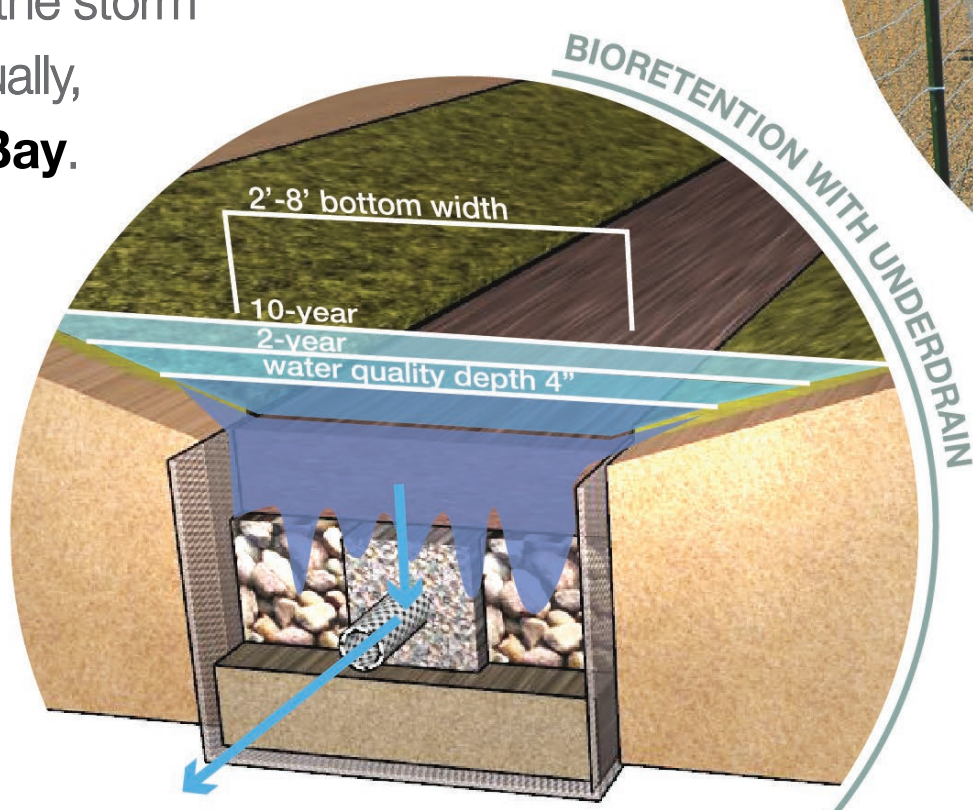
PROPOSED CONDITION: NEW CROSSWALKS + NEW STORMWATER SYSTEM

WHAT WILL THIS BE LIKE?

INTEGRATED WATER MANAGEMENT IN THE COMMUNITY

Green Infrastructure describes landscape features that use **natural processes that perform work** such as slowing, cleaning, and percolating **stormwater**. These elements are an opportunity to build something that proudly **reflects our region** with native plants, trees, flowering shrubs.

Poor local water percolation means we'll need to build what's called **"bioretention with underdrain,"** meaning a wide, gravel-bottom, brook that returns **cleaner water** to the storm drains, and, eventually, **Upper Newport Bay**.



Southern California neighborhoods include examples such as **Bimini Slough Ecology Park**.

Nestled in a similar-sized pocket park, it provides much needed space for all residents to enjoy the shade of a tree near an occasionally flowing **natural water feature**.





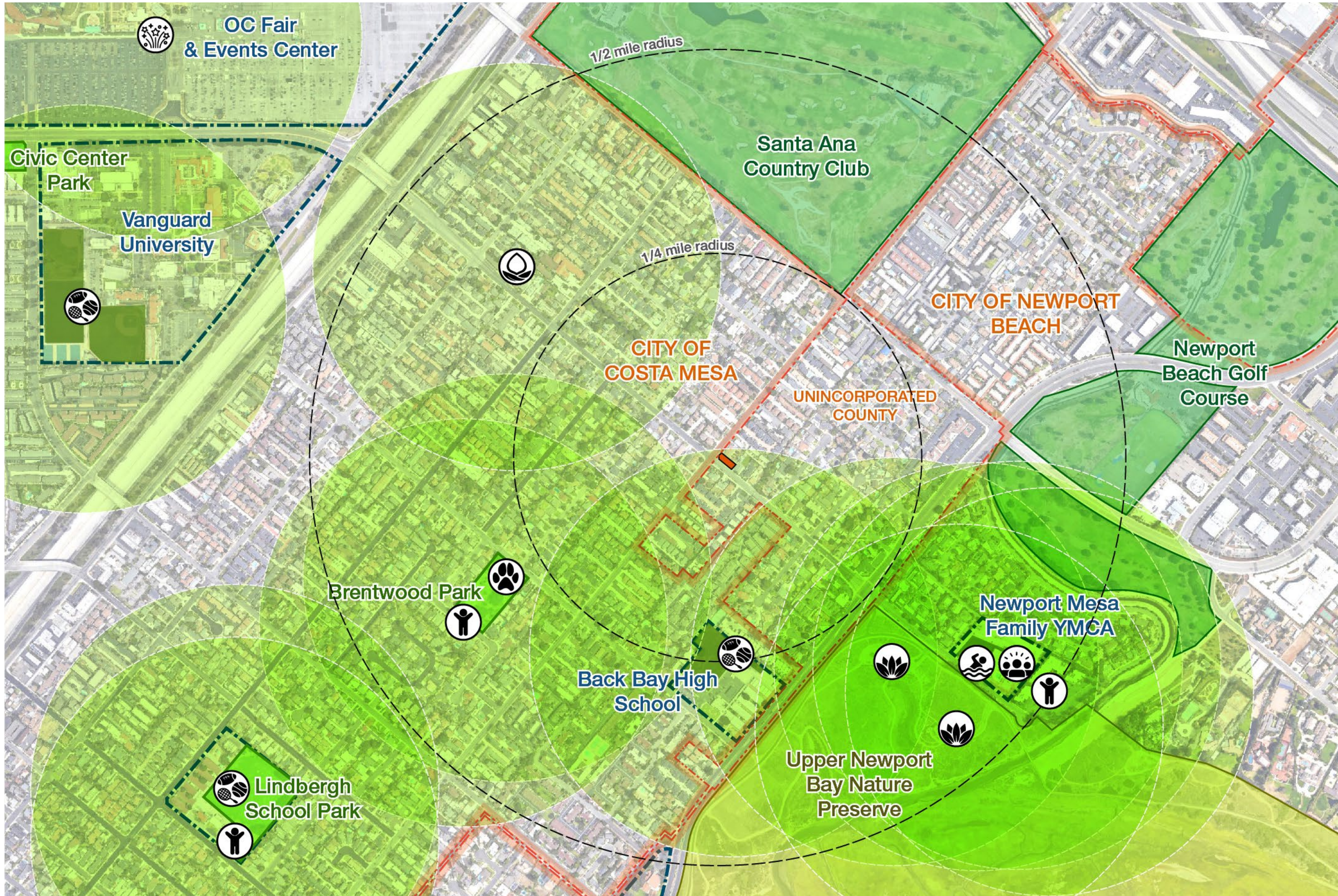
NEIGHBORHOOD ANALYSIS: WHAT'S NEEDED

SHARED VISION: WE NEED YOU TO TELL US WHAT'S RIGHT FOR THIS CORNER

This highly visible neighborhood corner should represent what's best about this community. Choosing the direction of a new park, imagined and built from scratch, is a rare moment for many Orange County neighborhoods. Let's take stock of what recreational and open space resources we have, and consider that the decisions we make today should be a shared vision for the kind of community we want today and for future generations.

WHAT'S AROUND?

OPEN SPACE + RECREATION RESOURCES NEAR YOU



LEGEND

Open Spaces + Facility Areas

- Project Site
- Golf Course
- Regional Natural Open Space
- Local Park
- Community Facility
- Open Space w/in Community Facility

Community Recreational Resources

- Playground
- Aquatic Facility
- Dog Park or Pet-Friendly Park
- Athletic Facility
- Event Space
- Community Garden
- Community Center / Gathering
- Nature Center / Major Trailhead

----- Walkable Access to Recreation Facility

5 minute walk radii

Municipal Boundaries

WHAT IS OUR VISION?

USE POST-ITS TO SHARE THE HEADLINE YOU'D WISH TO SEE ABOUT THIS PROJECT:

THE ORANGE COUNTY
NEWSPAPER



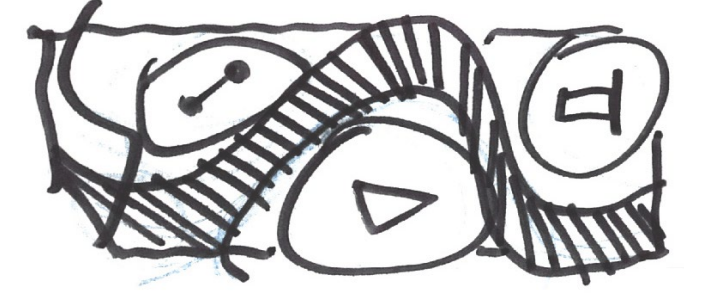


OPTION 1: WELLNESS PARK

WEAVE REJUVENATION AND EXERCISE BETWEEN PATHS IN AN ECOLOGICAL HAVEN

This scheme emphasizes the role it plays in collecting and cleaning local stormwater while rebuilding a patch reflective of the native regional ecosystem. Most like our Bimini Slough Ecology Park example, the swale coursing through the site is an opportunity to show and teach children who can touch a landscape that transforms with seasons and rainfall. Spaces for meditation, yoga, and fitness benefit from the shade of Ironwood and sycamore trees.

LET'S IMAGINE



KEY PARK DESIGN ELEMENTS

- 1 Gravel footpaths
- 2 Exercise areas
- 3 Meditation/yoga areas
- 4 Child or adult climbing
- 5 Main entry with fossil patterns
- 6 Bioretention swale
- 7 Native flowering plants
- 8 Accessible footbridges
- 9 Historic mural or mosaic
- 10 Interpretive signage
- 11 Native sycamore trees
- 12 Bench seating

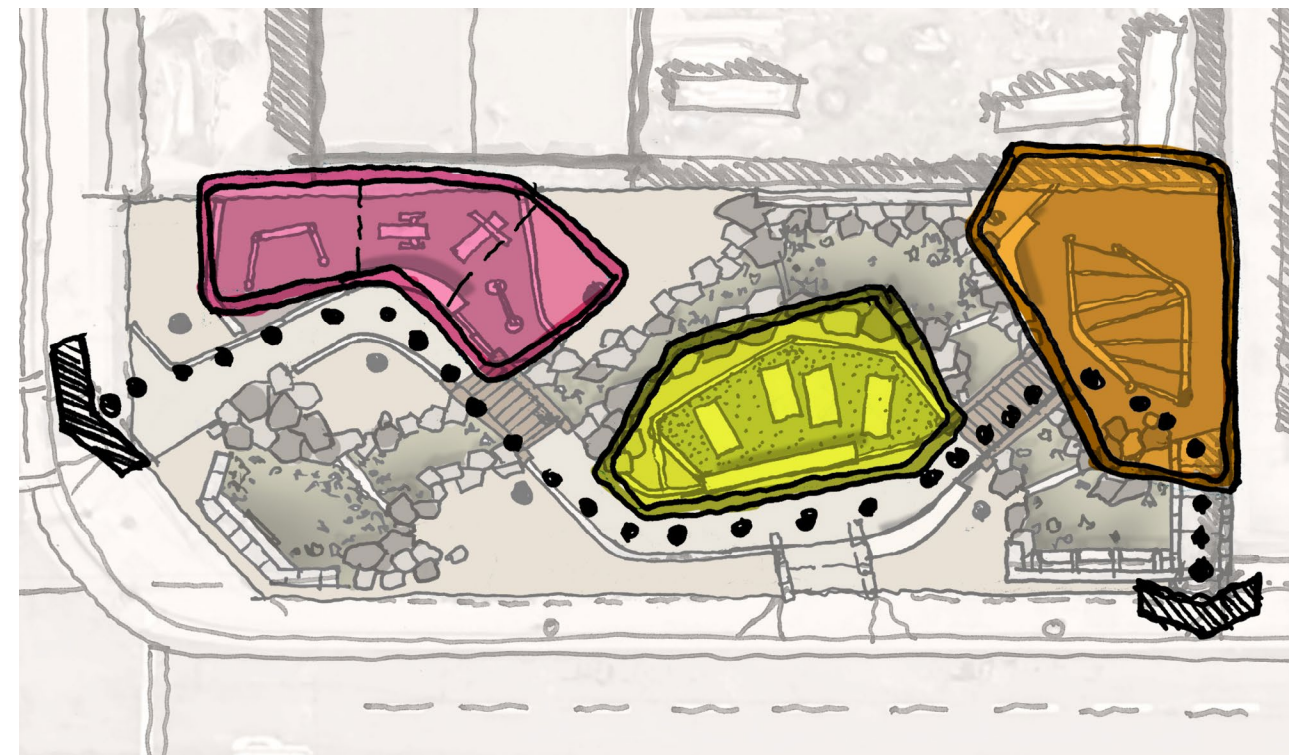
ILLUSTRATIVE PARK CONCEPT PLAN



*Images, layouts, and amenity proposals are for illustrative purposes only. Park drawings do not reflect final street improvements proposal.

YOU DECIDE

DO YOU PREFER THESE ACTIVITIES?



KEY ACTIVITIES + USES

- Strength Exercise + Aerobics
- Meditation + Yoga
- Native Ecology Discovery + Learning
- Shaded Seating + Contemplative Space
- Natural Environment Promenade

VOTE

<input type="radio"/>	<input type="radio"/>	<input type="radio"/>	<input type="radio"/>	<input type="radio"/>	<input type="radio"/>	<input type="radio"/>	<input type="radio"/>	<input type="radio"/>	<input type="radio"/>
<input type="radio"/>	<input type="radio"/>	<input type="radio"/>	<input type="radio"/>	<input type="radio"/>	<input type="radio"/>	<input type="radio"/>	<input type="radio"/>	<input type="radio"/>	<input type="radio"/>
<input type="radio"/>	<input type="radio"/>	<input type="radio"/>	<input type="radio"/>	<input type="radio"/>	<input type="radio"/>	<input type="radio"/>	<input type="radio"/>	<input type="radio"/>	<input type="radio"/>
<input type="radio"/>	<input type="radio"/>	<input type="radio"/>	<input type="radio"/>	<input type="radio"/>	<input type="radio"/>	<input type="radio"/>	<input type="radio"/>	<input type="radio"/>	<input type="radio"/>
<input type="radio"/>	<input type="radio"/>	<input type="radio"/>	<input type="radio"/>	<input type="radio"/>	<input type="radio"/>	<input type="radio"/>	<input type="radio"/>	<input type="radio"/>	<input type="radio"/>
<input type="radio"/>	<input type="radio"/>	<input type="radio"/>	<input type="radio"/>	<input type="radio"/>	<input type="radio"/>	<input type="radio"/>	<input type="radio"/>	<input type="radio"/>	<input type="radio"/>
<input type="radio"/>	<input type="radio"/>	<input type="radio"/>	<input type="radio"/>	<input type="radio"/>	<input type="radio"/>	<input type="radio"/>	<input type="radio"/>	<input type="radio"/>	<input type="radio"/>
<input type="radio"/>	<input type="radio"/>	<input type="radio"/>	<input type="radio"/>	<input type="radio"/>	<input type="radio"/>	<input type="radio"/>	<input type="radio"/>	<input type="radio"/>	<input type="radio"/>
<input type="radio"/>	<input type="radio"/>	<input type="radio"/>	<input type="radio"/>	<input type="radio"/>	<input type="radio"/>	<input type="radio"/>	<input type="radio"/>	<input type="radio"/>	<input type="radio"/>
<input type="radio"/>	<input type="radio"/>	<input type="radio"/>	<input type="radio"/>	<input type="radio"/>	<input type="radio"/>	<input type="radio"/>	<input type="radio"/>	<input type="radio"/>	<input type="radio"/>

DO YOU PREFER THIS LOOK & LAYOUT?



KEY DESIGN + AESTHETIC FEATURES

- Natural + Rural Aesthetic
- Interwoven Stormwater Swale + Footpath
- Reflecting Our Regional Natural Ecosystem
- Smaller + More Intimate Shaded Spaces
- Flagstones + Wood Rail Fences, Drought Tolerant

VOTE

<input type="radio"/>	<input type="radio"/>	<input type="radio"/>	<input type="radio"/>	<input type="radio"/>	<input type="radio"/>	<input type="radio"/>	<input type="radio"/>	<input type="radio"/>	<input type="radio"/>
<input type="radio"/>	<input type="radio"/>	<input type="radio"/>	<input type="radio"/>	<input type="radio"/>	<input type="radio"/>	<input type="radio"/>	<input type="radio"/>	<input type="radio"/>	<input type="radio"/>
<input type="radio"/>	<input type="radio"/>	<input type="radio"/>	<input type="radio"/>	<input type="radio"/>	<input type="radio"/>	<input type="radio"/>	<input type="radio"/>	<input type="radio"/>	<input type="radio"/>
<input type="radio"/>	<input type="radio"/>	<input type="radio"/>	<input type="radio"/>	<input type="radio"/>	<input type="radio"/>	<input type="radio"/>	<input type="radio"/>	<input type="radio"/>	<input type="radio"/>
<input type="radio"/>	<input type="radio"/>	<input type="radio"/>	<input type="radio"/>	<input type="radio"/>	<input type="radio"/>	<input type="radio"/>	<input type="radio"/>	<input type="radio"/>	<input type="radio"/>
<input type="radio"/>	<input type="radio"/>	<input type="radio"/>	<input type="radio"/>	<input type="radio"/>	<input type="radio"/>	<input type="radio"/>	<input type="radio"/>	<input type="radio"/>	<input type="radio"/>
<input type="radio"/>	<input type="radio"/>	<input type="radio"/>	<input type="radio"/>	<input type="radio"/>	<input type="radio"/>	<input type="radio"/>	<input type="radio"/>	<input type="radio"/>	<input type="radio"/>
<input type="radio"/>	<input type="radio"/>	<input type="radio"/>	<input type="radio"/>	<input type="radio"/>	<input type="radio"/>	<input type="radio"/>	<input type="radio"/>	<input type="radio"/>	<input type="radio"/>
<input type="radio"/>	<input type="radio"/>	<input type="radio"/>	<input type="radio"/>	<input type="radio"/>	<input type="radio"/>	<input type="radio"/>	<input type="radio"/>	<input type="radio"/>	<input type="radio"/>
<input type="radio"/>	<input type="radio"/>	<input type="radio"/>	<input type="radio"/>	<input type="radio"/>	<input type="radio"/>	<input type="radio"/>	<input type="radio"/>	<input type="radio"/>	<input type="radio"/>

*Images, layouts, and amenity proposals are for illustrative purposes only. Park drawings do not reflect final street improvements proposal.



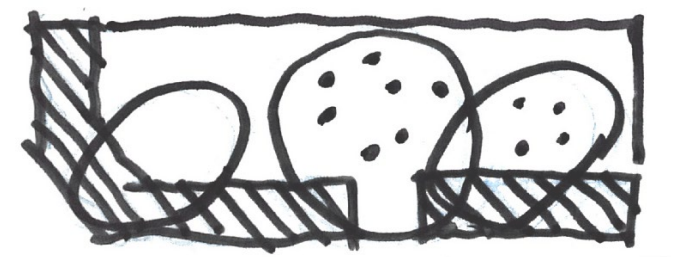
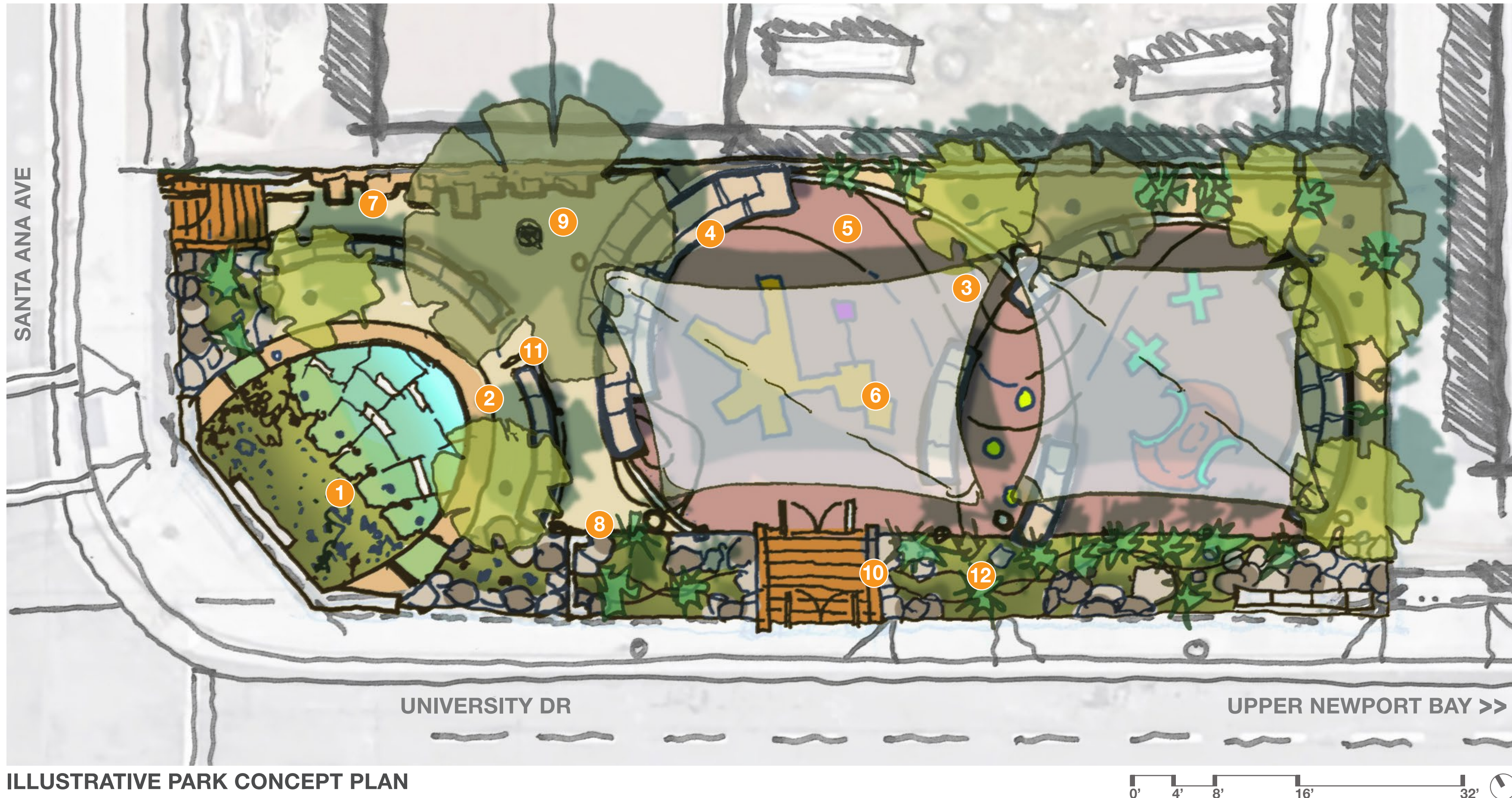
OPTION 2:

LOCAL TOT LOT

GATHER CHILDREN AND FAMILIES IN CIRCLES FOR PLAY AND STORYTELLING

This scheme wraps family members and elders as they comfortably watch over young children. Accessibility, safety, and passive outdoor comfort would be assured over a synthetic ground material and under tensile fabric canopies. The stormwater bioretention swale will serve a visual and noise buffer to the surrounding streets, while also intersecting with a storytelling circle that is activated on those special rainy days.

LET'S IMAGINE



KEY PARK DESIGN ELEMENTS

- 1 Interactive water basin
- 2 Storytelling circle and stage
- 3 Shade canopies
- 4 Bench seating with support
- 5 Soft play area surface
- 6 Tot-lot play features
- 7 Interactive discovery wall
- 8 Interpretive signage
- 9 Native shade trees
- 10 Child proof double gates
- 11 Child proof interior fencing
- 12 Bioretention swale

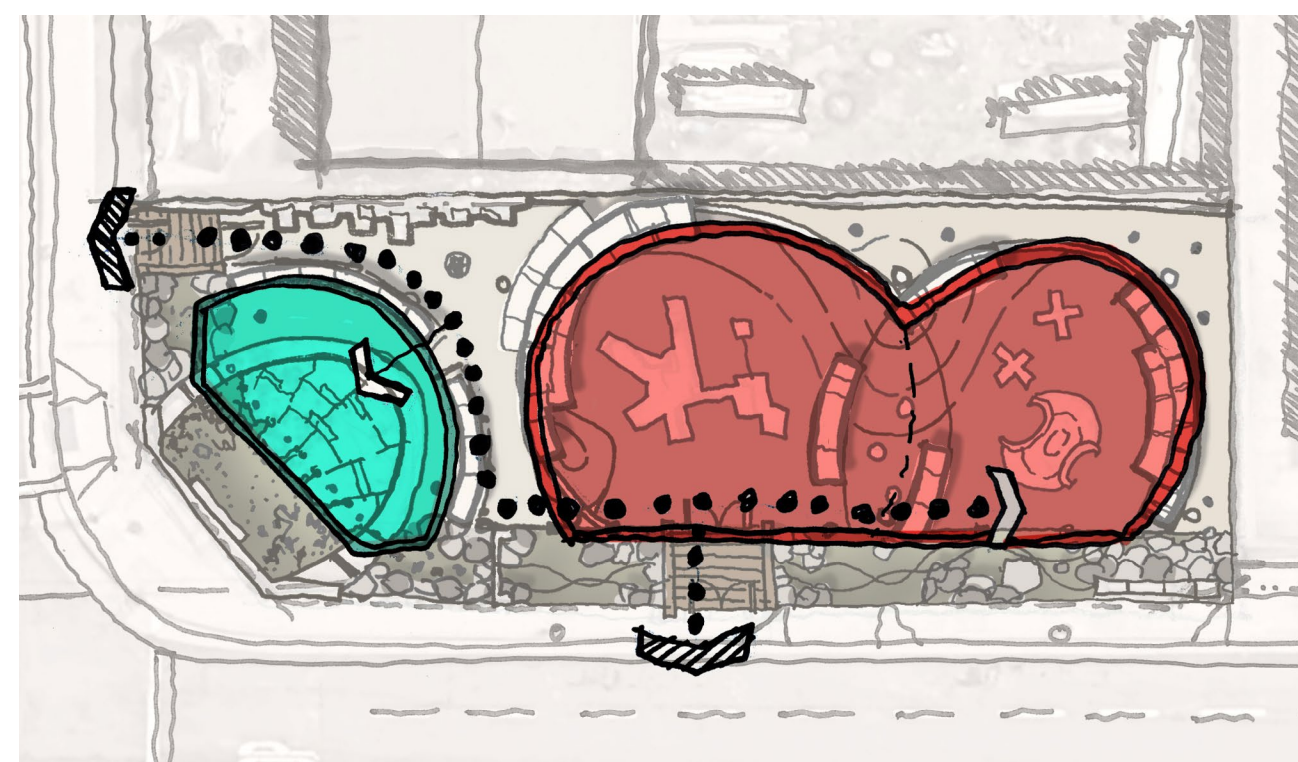
ILLUSTRATIVE PARK CONCEPT PLAN



*Images, layouts, and amenity proposals are for illustrative purposes only. Park drawings do not reflect final street improvements proposal.

LET'S DECIDE

DO YOU PREFER THESE ACTIVITIES?



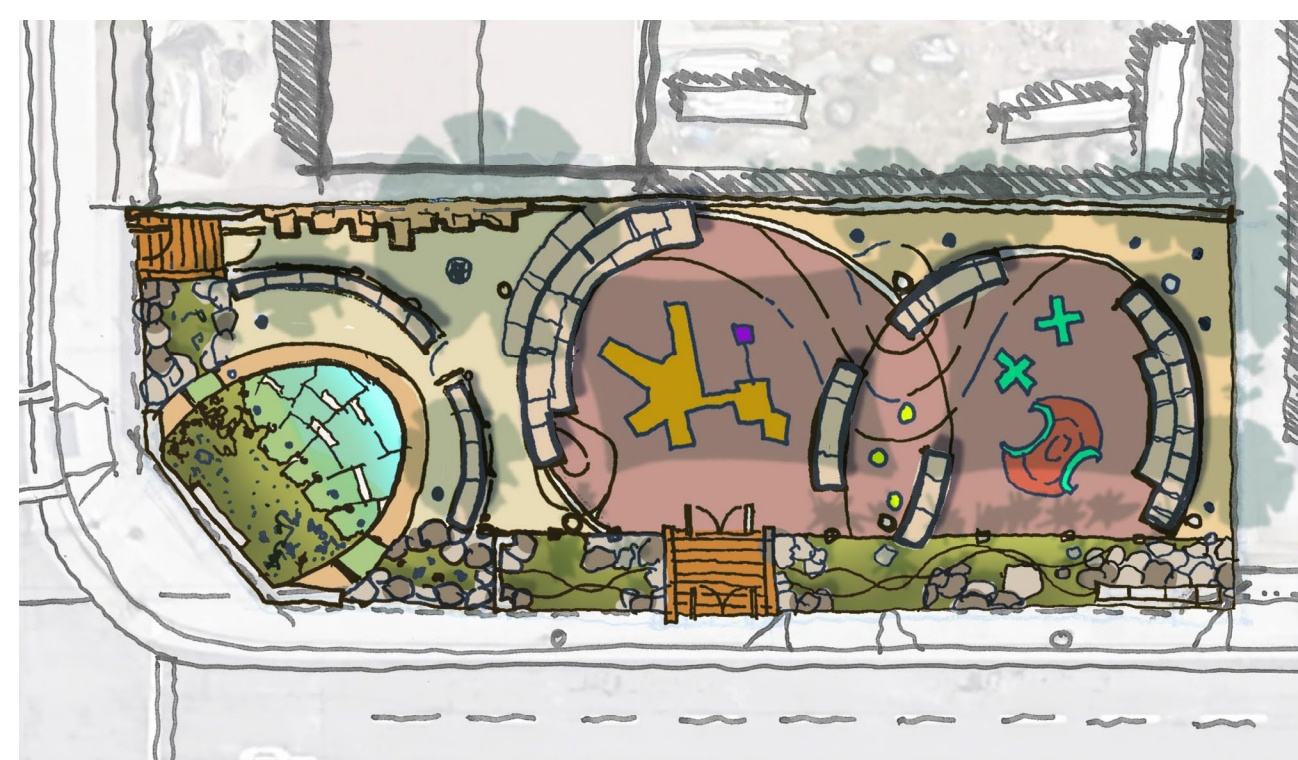
KEY ACTIVITIES + USES

- Young Child Running + Playing Space
- Family + Senior Citizen Seating + Gathering
- Storytelling + Interactive Games + Readings
- Supervised Rain Garden Interaction
- Local History + Ecology Learning

VOTE

<input type="radio"/>	<input type="radio"/>	<input type="radio"/>	<input type="radio"/>	<input type="radio"/>	<input type="radio"/>	<input type="radio"/>	<input type="radio"/>	<input type="radio"/>	<input type="radio"/>
<input type="radio"/>	<input type="radio"/>	<input type="radio"/>	<input type="radio"/>	<input type="radio"/>	<input type="radio"/>	<input type="radio"/>	<input type="radio"/>	<input type="radio"/>	<input type="radio"/>
<input type="radio"/>	<input type="radio"/>	<input type="radio"/>	<input type="radio"/>	<input type="radio"/>	<input type="radio"/>	<input type="radio"/>	<input type="radio"/>	<input type="radio"/>	<input type="radio"/>
<input type="radio"/>	<input type="radio"/>	<input type="radio"/>	<input type="radio"/>	<input type="radio"/>	<input type="radio"/>	<input type="radio"/>	<input type="radio"/>	<input type="radio"/>	<input type="radio"/>
<input type="radio"/>	<input type="radio"/>	<input type="radio"/>	<input type="radio"/>	<input type="radio"/>	<input type="radio"/>	<input type="radio"/>	<input type="radio"/>	<input type="radio"/>	<input type="radio"/>
<input type="radio"/>	<input type="radio"/>	<input type="radio"/>	<input type="radio"/>	<input type="radio"/>	<input type="radio"/>	<input type="radio"/>	<input type="radio"/>	<input type="radio"/>	<input type="radio"/>
<input type="radio"/>	<input type="radio"/>	<input type="radio"/>	<input type="radio"/>	<input type="radio"/>	<input type="radio"/>	<input type="radio"/>	<input type="radio"/>	<input type="radio"/>	<input type="radio"/>
<input type="radio"/>	<input type="radio"/>	<input type="radio"/>	<input type="radio"/>	<input type="radio"/>	<input type="radio"/>	<input type="radio"/>	<input type="radio"/>	<input type="radio"/>	<input type="radio"/>
<input type="radio"/>	<input type="radio"/>	<input type="radio"/>	<input type="radio"/>	<input type="radio"/>	<input type="radio"/>	<input type="radio"/>	<input type="radio"/>	<input type="radio"/>	<input type="radio"/>
<input type="radio"/>	<input type="radio"/>	<input type="radio"/>	<input type="radio"/>	<input type="radio"/>	<input type="radio"/>	<input type="radio"/>	<input type="radio"/>	<input type="radio"/>	<input type="radio"/>

DO YOU PREFER THIS LOOK & LAYOUT?



KEY DESIGN + AESTHETIC FEATURES

- Contemporary + Colorful
- Large Intersecting Play Areas
- Reflecting Imaginative + Creative Settings
- Mid-Sized Collective Spaces w/ Shared Views
- Synthetic Surfaces, Fabric Shade Canopies

VOTE

<input type="radio"/>	<input type="radio"/>	<input type="radio"/>	<input type="radio"/>	<input type="radio"/>	<input type="radio"/>	<input type="radio"/>	<input type="radio"/>	<input type="radio"/>	<input type="radio"/>
<input type="radio"/>	<input type="radio"/>	<input type="radio"/>	<input type="radio"/>	<input type="radio"/>	<input type="radio"/>	<input type="radio"/>	<input type="radio"/>	<input type="radio"/>	<input type="radio"/>
<input type="radio"/>	<input type="radio"/>	<input type="radio"/>	<input type="radio"/>	<input type="radio"/>	<input type="radio"/>	<input type="radio"/>	<input type="radio"/>	<input type="radio"/>	<input type="radio"/>
<input type="radio"/>	<input type="radio"/>	<input type="radio"/>	<input type="radio"/>	<input type="radio"/>	<input type="radio"/>	<input type="radio"/>	<input type="radio"/>	<input type="radio"/>	<input type="radio"/>
<input type="radio"/>	<input type="radio"/>	<input type="radio"/>	<input type="radio"/>	<input type="radio"/>	<input type="radio"/>	<input type="radio"/>	<input type="radio"/>	<input type="radio"/>	<input type="radio"/>
<input type="radio"/>	<input type="radio"/>	<input type="radio"/>	<input type="radio"/>	<input type="radio"/>	<input type="radio"/>	<input type="radio"/>	<input type="radio"/>	<input type="radio"/>	<input type="radio"/>
<input type="radio"/>	<input type="radio"/>	<input type="radio"/>	<input type="radio"/>	<input type="radio"/>	<input type="radio"/>	<input type="radio"/>	<input type="radio"/>	<input type="radio"/>	<input type="radio"/>
<input type="radio"/>	<input type="radio"/>	<input type="radio"/>	<input type="radio"/>	<input type="radio"/>	<input type="radio"/>	<input type="radio"/>	<input type="radio"/>	<input type="radio"/>	<input type="radio"/>
<input type="radio"/>	<input type="radio"/>	<input type="radio"/>	<input type="radio"/>	<input type="radio"/>	<input type="radio"/>	<input type="radio"/>	<input type="radio"/>	<input type="radio"/>	<input type="radio"/>
<input type="radio"/>	<input type="radio"/>	<input type="radio"/>	<input type="radio"/>	<input type="radio"/>	<input type="radio"/>	<input type="radio"/>	<input type="radio"/>	<input type="radio"/>	<input type="radio"/>

*Images, layouts, and amenity proposals are for illustrative purposes only. Park drawings do not reflect final street improvements proposal.

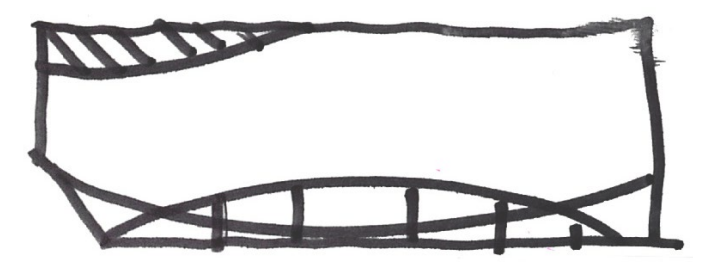


OPTION 3: DOG PARK

OPEN TO A RANGE OF ACTIVITIES THAT MIGHT FILL A LONG GREEN COMMON

This scheme maximizes a single open space for running and large groups – suited to the needs of a dog park for small dogs. The shading strategy in this option is a single modern awning that protects waiting visitors, but could also serve as a staging area for catering or community event tables. In essence, this design is open and flexible in terms of use. This option minimizes the role of stormwater retention – collecting park runoff at the back of the green.

LET'S IMAGINE



KEY PARK DESIGN ELEMENTS

- 1 Trellis or canopy shade structure
- 2 Visual screen foliage
- 3 Animal-safe native flora
- 4 Bioretention swale
- 5 Dog-proof double gates
- 6 High fencing
- 7 Sound barrier wall
- 8 Natural or synthetic turf
- 9 Shaded seating area
- 10 Leash hitch posts
- 11 Dog/human drinking fountain
- 12 Pickup bags and rules posted

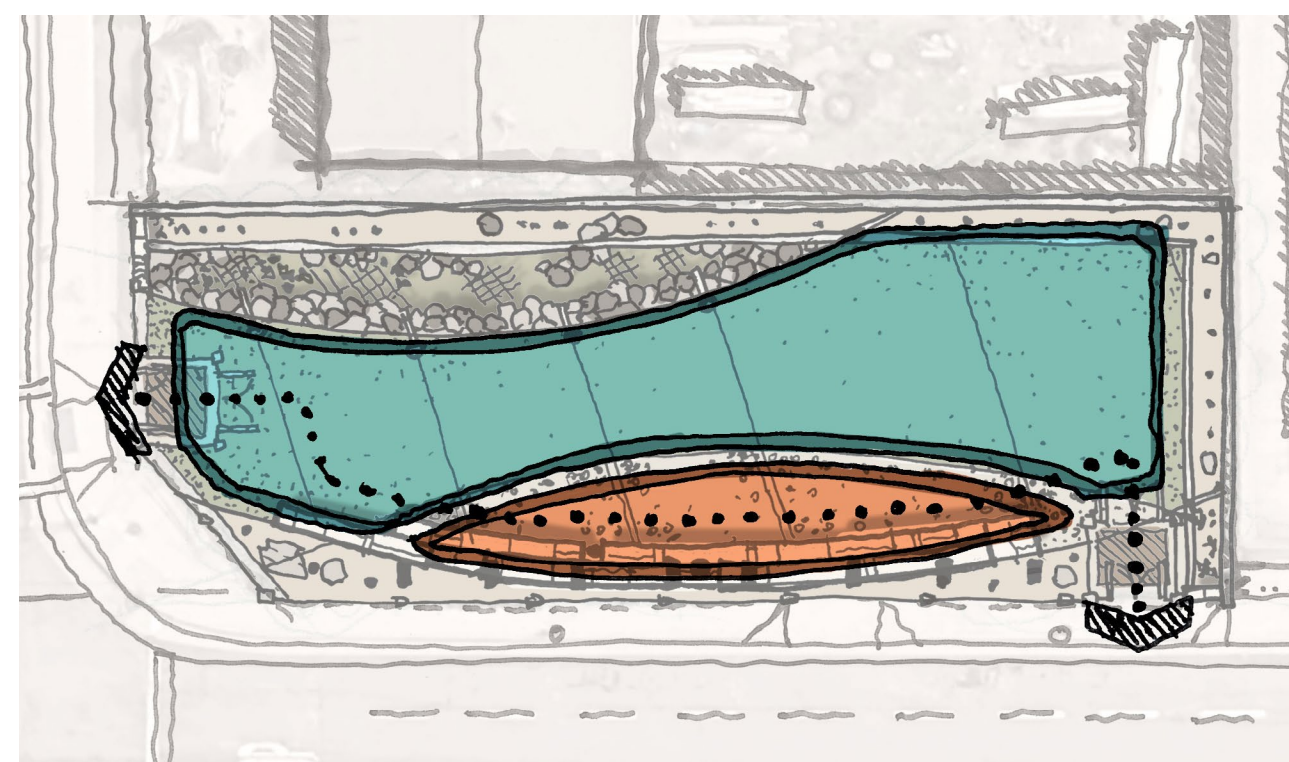
ILLUSTRATIVE PARK CONCEPT PLAN



*Images, layouts, and amenity proposals are for illustrative purposes only. Park drawings do not reflect final street improvements proposal.

LET'S DECIDE

DO YOU PREFER THESE ACTIVITIES?



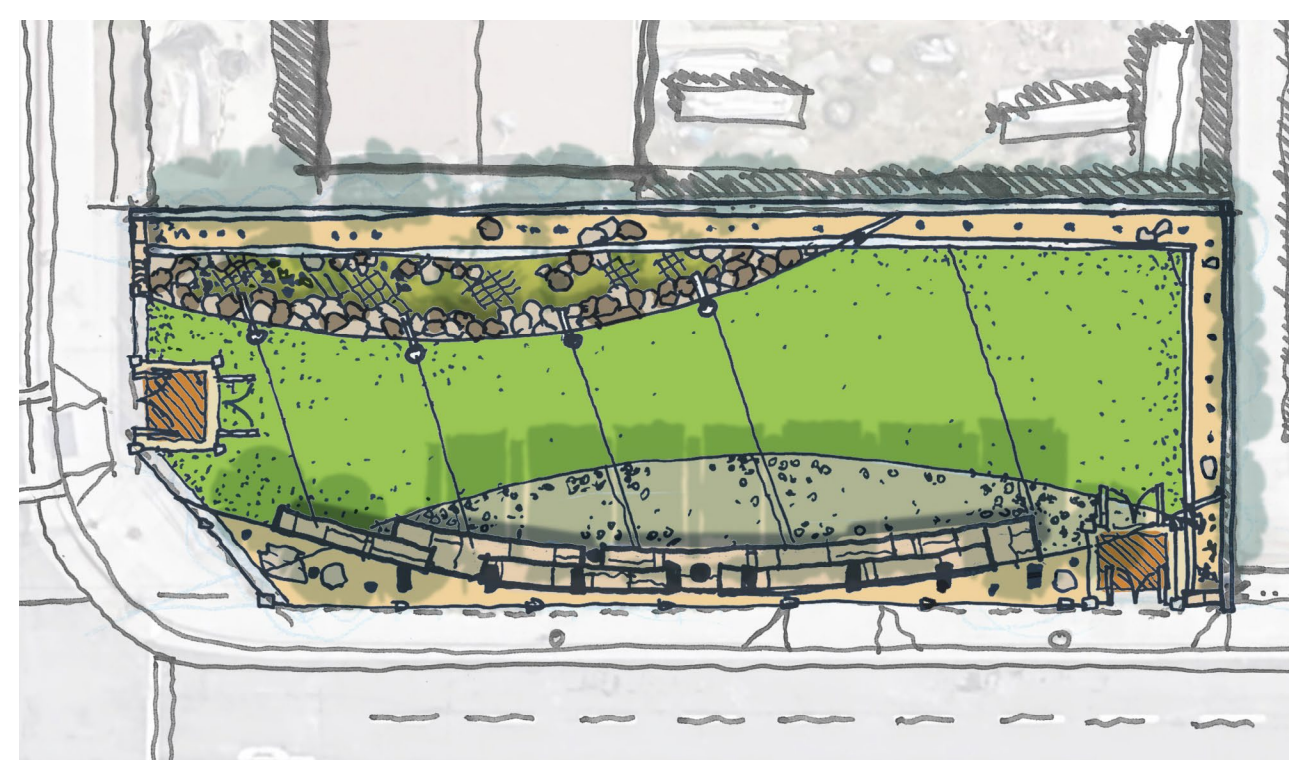
KEY ACTIVITIES + USES

- Dog Running + Athletic Activity
- Training Classes + Social Gathering
- Alternative Use: Block Party Gathering Space
- Alternative Use: Community Activities for All Ages
- Alternative Use: Outdoor Movies (noise issue)

VOTE

<input type="radio"/>	<input type="radio"/>	<input type="radio"/>	<input type="radio"/>	<input type="radio"/>	<input type="radio"/>	<input type="radio"/>	<input type="radio"/>	<input type="radio"/>	<input type="radio"/>
<input type="radio"/>	<input type="radio"/>	<input type="radio"/>	<input type="radio"/>	<input type="radio"/>	<input type="radio"/>	<input type="radio"/>	<input type="radio"/>	<input type="radio"/>	<input type="radio"/>
<input type="radio"/>	<input type="radio"/>	<input type="radio"/>	<input type="radio"/>	<input type="radio"/>	<input type="radio"/>	<input type="radio"/>	<input type="radio"/>	<input type="radio"/>	<input type="radio"/>
<input type="radio"/>	<input type="radio"/>	<input type="radio"/>	<input type="radio"/>	<input type="radio"/>	<input type="radio"/>	<input type="radio"/>	<input type="radio"/>	<input type="radio"/>	<input type="radio"/>
<input type="radio"/>	<input type="radio"/>	<input type="radio"/>	<input type="radio"/>	<input type="radio"/>	<input type="radio"/>	<input type="radio"/>	<input type="radio"/>	<input type="radio"/>	<input type="radio"/>
<input type="radio"/>	<input type="radio"/>	<input type="radio"/>	<input type="radio"/>	<input type="radio"/>	<input type="radio"/>	<input type="radio"/>	<input type="radio"/>	<input type="radio"/>	<input type="radio"/>
<input type="radio"/>	<input type="radio"/>	<input type="radio"/>	<input type="radio"/>	<input type="radio"/>	<input type="radio"/>	<input type="radio"/>	<input type="radio"/>	<input type="radio"/>	<input type="radio"/>
<input type="radio"/>	<input type="radio"/>	<input type="radio"/>	<input type="radio"/>	<input type="radio"/>	<input type="radio"/>	<input type="radio"/>	<input type="radio"/>	<input type="radio"/>	<input type="radio"/>
<input type="radio"/>	<input type="radio"/>	<input type="radio"/>	<input type="radio"/>	<input type="radio"/>	<input type="radio"/>	<input type="radio"/>	<input type="radio"/>	<input type="radio"/>	<input type="radio"/>
<input type="radio"/>	<input type="radio"/>	<input type="radio"/>	<input type="radio"/>	<input type="radio"/>	<input type="radio"/>	<input type="radio"/>	<input type="radio"/>	<input type="radio"/>	<input type="radio"/>

DO YOU PREFER THIS LOOK & LAYOUT?



KEY DESIGN + AESTHETIC FEATURES

- Modern + Minimalist
- One Long Green Common
- Reflecting A Clean Functional Environment
- Very Open and Exposed Outdoor Setting
- Clean Concrete, Metal Fencing + Shade Structures

VOTE

<input type="radio"/>	<input type="radio"/>	<input type="radio"/>	<input type="radio"/>	<input type="radio"/>	<input type="radio"/>	<input type="radio"/>	<input type="radio"/>	<input type="radio"/>	<input type="radio"/>
<input type="radio"/>	<input type="radio"/>	<input type="radio"/>	<input type="radio"/>	<input type="radio"/>	<input type="radio"/>	<input type="radio"/>	<input type="radio"/>	<input type="radio"/>	<input type="radio"/>
<input type="radio"/>	<input type="radio"/>	<input type="radio"/>	<input type="radio"/>	<input type="radio"/>	<input type="radio"/>	<input type="radio"/>	<input type="radio"/>	<input type="radio"/>	<input type="radio"/>
<input type="radio"/>	<input type="radio"/>	<input type="radio"/>	<input type="radio"/>	<input type="radio"/>	<input type="radio"/>	<input type="radio"/>	<input type="radio"/>	<input type="radio"/>	<input type="radio"/>
<input type="radio"/>	<input type="radio"/>	<input type="radio"/>	<input type="radio"/>	<input type="radio"/>	<input type="radio"/>	<input type="radio"/>	<input type="radio"/>	<input type="radio"/>	<input type="radio"/>
<input type="radio"/>	<input type="radio"/>	<input type="radio"/>	<input type="radio"/>	<input type="radio"/>	<input type="radio"/>	<input type="radio"/>	<input type="radio"/>	<input type="radio"/>	<input type="radio"/>
<input type="radio"/>	<input type="radio"/>	<input type="radio"/>	<input type="radio"/>	<input type="radio"/>	<input type="radio"/>	<input type="radio"/>	<input type="radio"/>	<input type="radio"/>	<input type="radio"/>
<input type="radio"/>	<input type="radio"/>	<input type="radio"/>	<input type="radio"/>	<input type="radio"/>	<input type="radio"/>	<input type="radio"/>	<input type="radio"/>	<input type="radio"/>	<input type="radio"/>
<input type="radio"/>	<input type="radio"/>	<input type="radio"/>	<input type="radio"/>	<input type="radio"/>	<input type="radio"/>	<input type="radio"/>	<input type="radio"/>	<input type="radio"/>	<input type="radio"/>
<input type="radio"/>	<input type="radio"/>	<input type="radio"/>	<input type="radio"/>	<input type="radio"/>	<input type="radio"/>	<input type="radio"/>	<input type="radio"/>	<input type="radio"/>	<input type="radio"/>

*Images, layouts, and amenity proposals are for illustrative purposes only. Park drawings do not reflect final street improvements proposal.



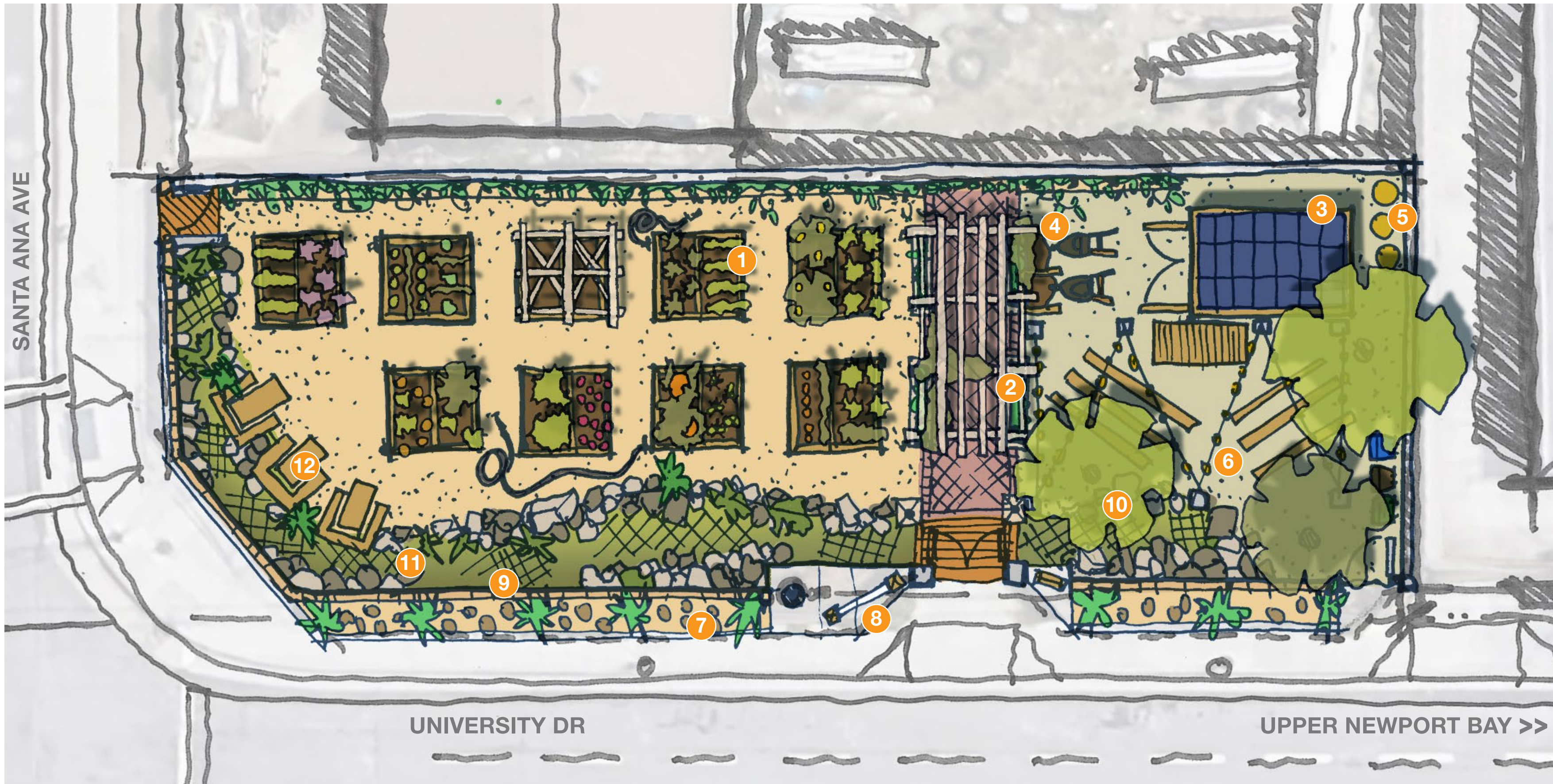
OPTION 4:

COMMUNITY GARDEN

ORGANIZE GROWING AND CELEBRATING LOCAL FOOD IN TWO DISTINCT SPACES

This scheme is primarily a small community garden that provides a shaded gathering space, on the other side of walkway entry, serving a range of activities. Traditional garden parterres inspires this design where working plots are visually buffered to maintain a clean presentation from the street. Collecting and filtering silt and effluent in stormwater runoff from a food garden is especially important.

LET'S IMAGINE



KEY PARK DESIGN ELEMENTS

- 1 Designated planting beds
- 2 Shade trellis over entry walkway
- 3 Storage and supply shed
- 4 Mulch storage
- 5 Composting bins
- 6 Gathering area w/ seating/stage
- 7 Native landscape visual buffer
- 8 Signage and rules posted
- 9 Security fencing
- 10 Native shade trees
- 11 Bioretention swale
- 12 Workbench seating

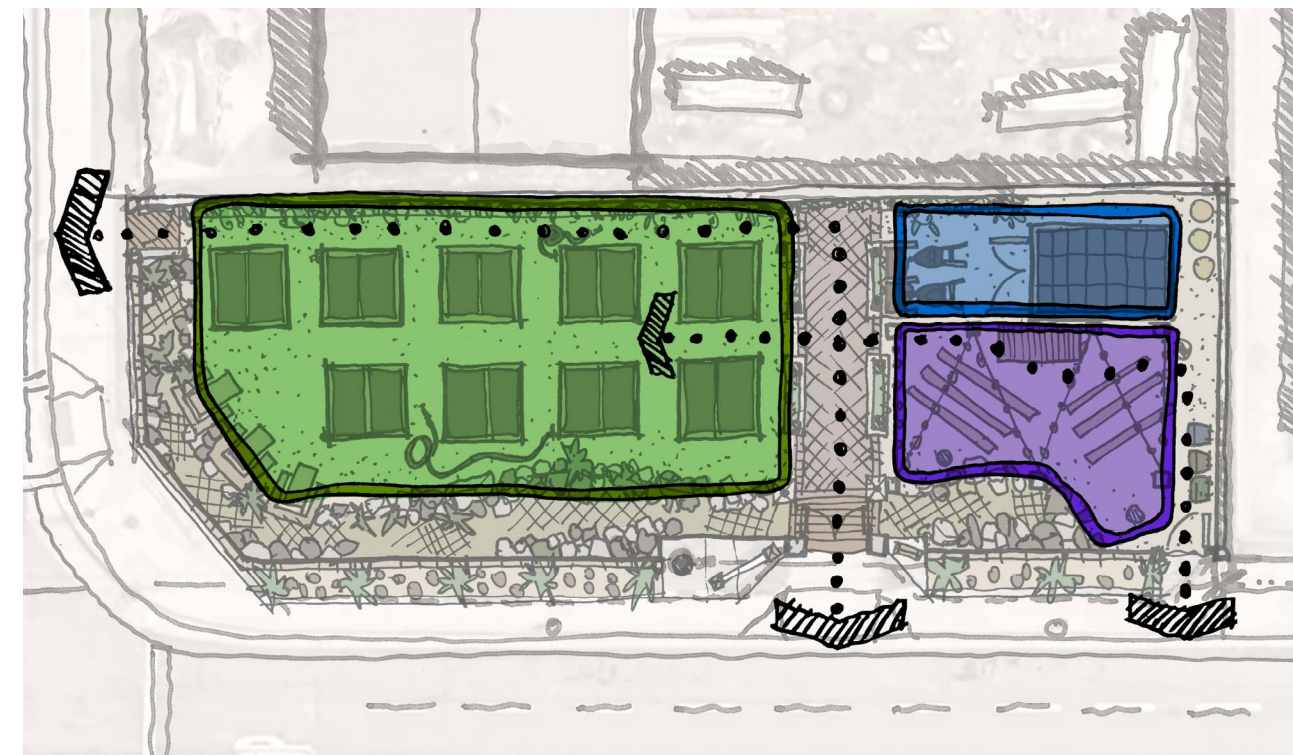
ILLUSTRATIVE PARK CONCEPT PLAN



*Images, layouts, and amenity proposals are for illustrative purposes only. Park drawings do not reflect final street improvements proposal.

LET'S DECIDE

DO YOU PREFER THESE ACTIVITIES?



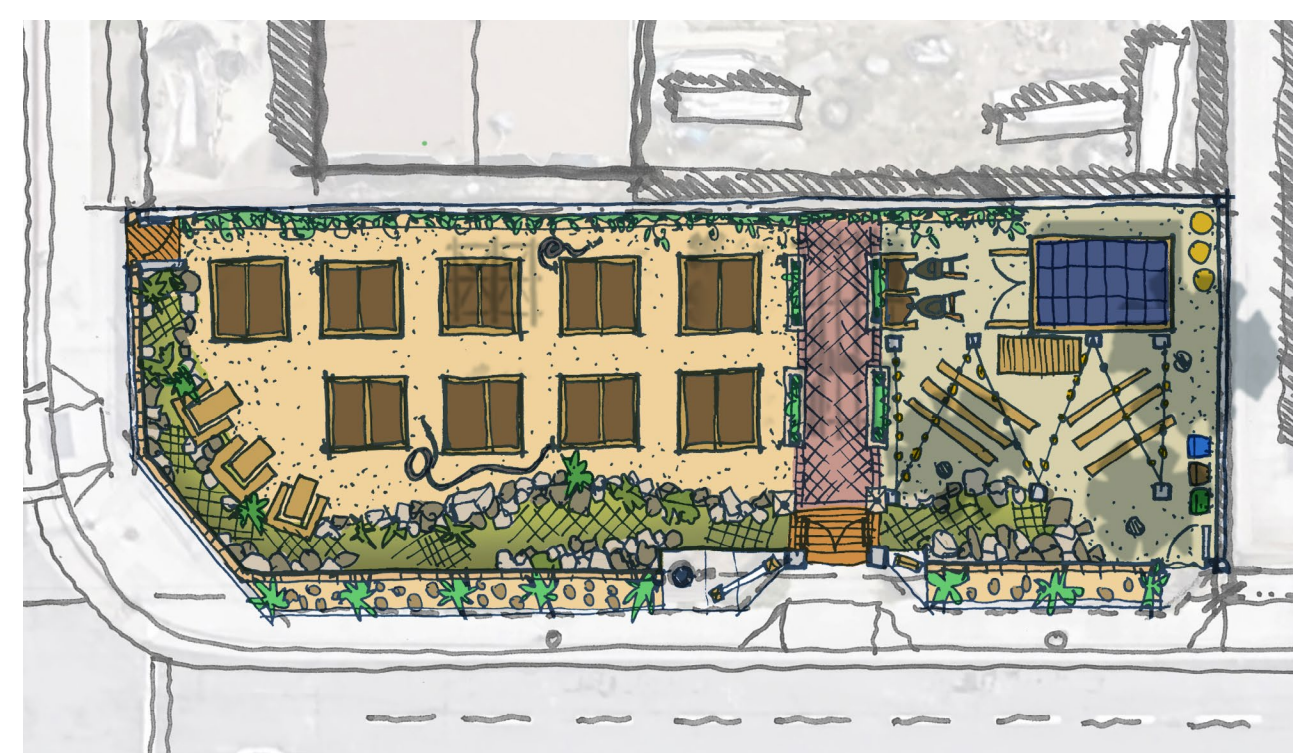
KEY ACTIVITIES + USES

- Community Garden Program + Co-Op Growing
- Childrens' Outdoor Productive Activities
- Local-Food-Oriented Picnicking
- Cooking + Local Food Lectures
- Sustainable Living Demonstration Site

VOTE

<input type="radio"/>	<input type="radio"/>	<input type="radio"/>	<input type="radio"/>	<input type="radio"/>	<input type="radio"/>	<input type="radio"/>	<input type="radio"/>	<input type="radio"/>	<input type="radio"/>
<input type="radio"/>	<input type="radio"/>	<input type="radio"/>	<input type="radio"/>	<input type="radio"/>	<input type="radio"/>	<input type="radio"/>	<input type="radio"/>	<input type="radio"/>	<input type="radio"/>
<input type="radio"/>	<input type="radio"/>	<input type="radio"/>	<input type="radio"/>	<input type="radio"/>	<input type="radio"/>	<input type="radio"/>	<input type="radio"/>	<input type="radio"/>	<input type="radio"/>
<input type="radio"/>	<input type="radio"/>	<input type="radio"/>	<input type="radio"/>	<input type="radio"/>	<input type="radio"/>	<input type="radio"/>	<input type="radio"/>	<input type="radio"/>	<input type="radio"/>
<input type="radio"/>	<input type="radio"/>	<input type="radio"/>	<input type="radio"/>	<input type="radio"/>	<input type="radio"/>	<input type="radio"/>	<input type="radio"/>	<input type="radio"/>	<input type="radio"/>
<input type="radio"/>	<input type="radio"/>	<input type="radio"/>	<input type="radio"/>	<input type="radio"/>	<input type="radio"/>	<input type="radio"/>	<input type="radio"/>	<input type="radio"/>	<input type="radio"/>
<input type="radio"/>	<input type="radio"/>	<input type="radio"/>	<input type="radio"/>	<input type="radio"/>	<input type="radio"/>	<input type="radio"/>	<input type="radio"/>	<input type="radio"/>	<input type="radio"/>
<input type="radio"/>	<input type="radio"/>	<input type="radio"/>	<input type="radio"/>	<input type="radio"/>	<input type="radio"/>	<input type="radio"/>	<input type="radio"/>	<input type="radio"/>	<input type="radio"/>
<input type="radio"/>	<input type="radio"/>	<input type="radio"/>	<input type="radio"/>	<input type="radio"/>	<input type="radio"/>	<input type="radio"/>	<input type="radio"/>	<input type="radio"/>	<input type="radio"/>
<input type="radio"/>	<input type="radio"/>	<input type="radio"/>	<input type="radio"/>	<input type="radio"/>	<input type="radio"/>	<input type="radio"/>	<input type="radio"/>	<input type="radio"/>	<input type="radio"/>

DO YOU PREFER THIS LOOK & LAYOUT?



KEY DESIGN + AESTHETIC FEATURES

- Busy + "Home-spun" w/ Formal Elements
- Highly Organized + Distinctive Zones
- Reflecting the Collaborative Effort of the Community
- One Open Expansive Area + One Small Shaded Area
- Many Different Materials + Colorful + Creative

VOTE

<input type="radio"/>	<input type="radio"/>	<input type="radio"/>	<input type="radio"/>	<input type="radio"/>	<input type="radio"/>	<input type="radio"/>	<input type="radio"/>	<input type="radio"/>	<input type="radio"/>
<input type="radio"/>	<input type="radio"/>	<input type="radio"/>	<input type="radio"/>	<input type="radio"/>	<input type="radio"/>	<input type="radio"/>	<input type="radio"/>	<input type="radio"/>	<input type="radio"/>
<input type="radio"/>	<input type="radio"/>	<input type="radio"/>	<input type="radio"/>	<input type="radio"/>	<input type="radio"/>	<input type="radio"/>	<input type="radio"/>	<input type="radio"/>	<input type="radio"/>
<input type="radio"/>	<input type="radio"/>	<input type="radio"/>	<input type="radio"/>	<input type="radio"/>	<input type="radio"/>	<input type="radio"/>	<input type="radio"/>	<input type="radio"/>	<input type="radio"/>
<input type="radio"/>	<input type="radio"/>	<input type="radio"/>	<input type="radio"/>	<input type="radio"/>	<input type="radio"/>	<input type="radio"/>	<input type="radio"/>	<input type="radio"/>	<input type="radio"/>
<input type="radio"/>	<input type="radio"/>	<input type="radio"/>	<input type="radio"/>	<input type="radio"/>	<input type="radio"/>	<input type="radio"/>	<input type="radio"/>	<input type="radio"/>	<input type="radio"/>
<input type="radio"/>	<input type="radio"/>	<input type="radio"/>	<input type="radio"/>	<input type="radio"/>	<input type="radio"/>	<input type="radio"/>	<input type="radio"/>	<input type="radio"/>	<input type="radio"/>
<input type="radio"/>	<input type="radio"/>	<input type="radio"/>	<input type="radio"/>	<input type="radio"/>	<input type="radio"/>	<input type="radio"/>	<input type="radio"/>	<input type="radio"/>	<input type="radio"/>
<input type="radio"/>	<input type="radio"/>	<input type="radio"/>	<input type="radio"/>	<input type="radio"/>	<input type="radio"/>	<input type="radio"/>	<input type="radio"/>	<input type="radio"/>	<input type="radio"/>
<input type="radio"/>	<input type="radio"/>	<input type="radio"/>	<input type="radio"/>	<input type="radio"/>	<input type="radio"/>	<input type="radio"/>	<input type="radio"/>	<input type="radio"/>	<input type="radio"/>

*Images, layouts, and amenity proposals are for illustrative purposes only. Park drawings do not reflect final street improvements proposal.

